

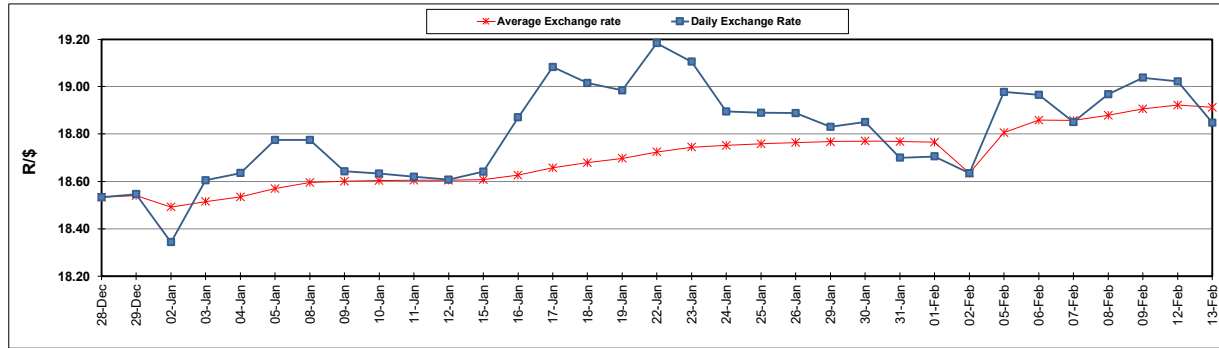
South African Cents per Litre (SA c/l)	PETROL 95 ULP	PETROL 93 ULP & LRP	DIESEL 0.05%	DIESEL 0.005%	ILL. PAR.
GAUTENG PUMP PRICE AS FROM 07/02/2024	2,324.000	2,292.000	-	-	-
WHOLESALE PRICE AS FROM 07/02/2024	-	-	2,136.170	2,142.570	1,583.938
SINGLE NATIONAL MAXIMUM RETAIL PRICE AS FROM 07/02/2024	-	-	-	-	2,052.000
BASIC FUEL PRICE - 13/02/2024	1,354.625	1,321.082	1,453.364	1,478.653	1,432.552
PRESS RELEASE CONTRIBUTION TO BFP 07/02/2024 - 13/02/2024	1,221.870	1,189.870	1,313.630	1,320.030	1,337.128
UNIT OVER/(UNDER) RECOVERY - 13/02/2024	(132.755)	(131.212)	(139.734)	(158.623)	(95.424)
AVERAGE BASIC FUEL PRICE 02/02/2024 - 13/02/2024	1,328.477	1,292.561	1,429.631	1,452.351	1,413.697
AVERAGE UNIT OVER/(UNDER) RECOVERY 02/02/2024 - 13/02/2024	(134.732)	(130.816)	(143.376)	(158.571)	(96.444)

ANALYSIS MOVEMENT OF AVERAGE OVER/(UNDER) RECOVERY

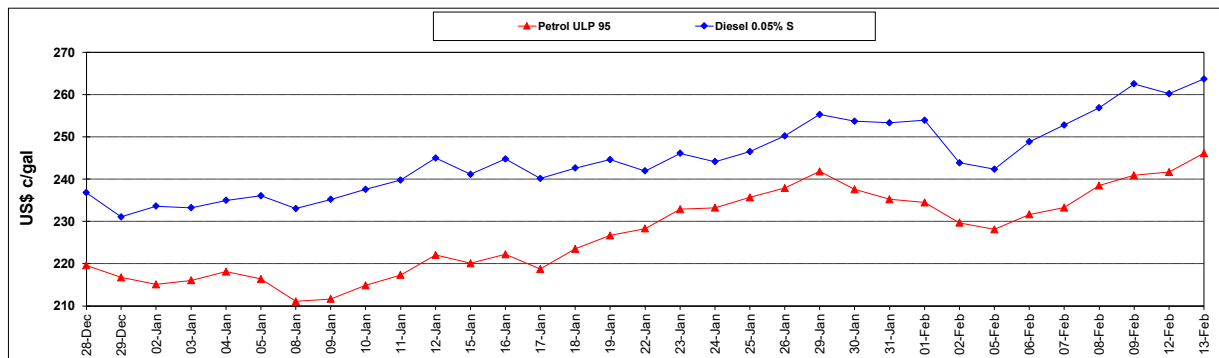
	PETROL 95	PETROL 93	DIESEL 0.05%	DIESEL 0.005%	ILL. PAR.
- MOVEMENT IN INTERNATIONAL PRODUCT PRICES	(124.392)	(120.756)	(132.249)	(147.267)	(85.441)
- MOVEMENT IN EXCHANGE RATE	(10.340)	(10.060)	(11.127)	(11.304)	(11.003)
AVERAGE UNIT OVER/(UNDER) RECOVERY 02/02/2024 - 13/02/2024	(134.732)	(130.816)	(143.376)	(158.571)	(96.444)

R/\$ EXCHANGE RATE - (R/\$18.8475 - 13/02/2024)

EXCHANGE RATE USED IN BASIC FUEL PRICE



INTERNATIONAL PRODUCT PRICES OF BASKET USED IN BASIC FUEL PRICE



BASIC FUEL PRICE IN SA CENTS PER LITRE

