

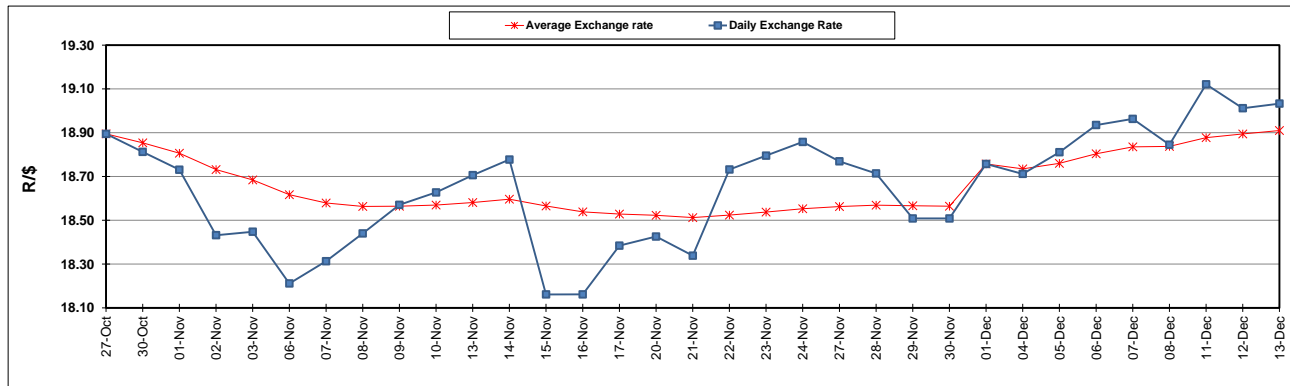
South African Cents per Litre (SA c/l)	PETROL 95 ULP	PETROL 93 ULP & LRP	DIESEL 0.05%	DIESEL 0.005%	ILL. PAR.
GAUTENG PUMP PRICE AS FROM 06/12/2023	2,325.000	2,279.000	-	-	-
WHOLESALE PRICE AS FROM 06/12/2023	-	-	2,181.490	2,198.890	1,623.938
SINGLE NATIONAL MAXIMUM RETAIL PRICE	-	-	-	-	2,105.000
BASIC FUEL PRICE - 13/12/2023	1,131.965	1,099.766	1,242.838	1,249.304	1,274.622
PRESS RELEASE CONTRIBUTION TO BFP 06/12/2023 - 13/12/2023	1,196.550	1,150.550	1,332.630	1,350.030	1,377.128
UNIT OVER/(UNDER) RECOVERY - 13/12/2023	64.585	50.784	89.792	100.726	102.506
AVERAGE BASIC FUEL PRICE 01/12/2023 - 13/12/2023	1,153.233	1,120.747	1,272.769	1,285.201	1,307.130
AVERAGE UNIT OVER/(UNDER) RECOVERY 01/12/2023 - 13/12/2023	76.250	62.736	134.194	141.162	131.665

### ANALYSIS MOVEMENT OF AVERAGE OVER/(UNDER) RECOVERY

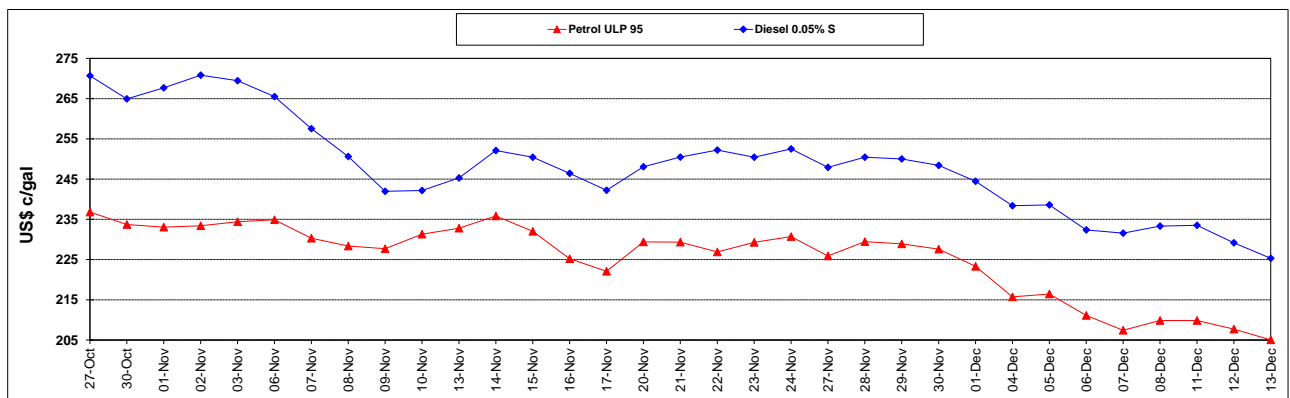
	PETROL 95	PETROL 93	DIESEL 0.05%	DIESEL 0.005%	ILL. PAR.
- MOVEMENT IN INTERNATIONAL PRODUCT PRICES	96.644	82.555	156.701	163.889	154.780
- MOVEMENT IN EXCHANGE RATE	(20.394)	(19.819)	(22.507)	(22.727)	(23.115)
AVERAGE UNIT OVER/(UNDER) RECOVERY 01/12/2023 - 13/12/2023	76.250	62.736	134.194	141.162	131.665

R/\$ EXCHANGE RATE - (R/\$19.0330 - 13/12/2023)

### EXCHANGE RATE USED IN BASIC FUEL PRICE



### INTERNATIONAL PRODUCT PRICES OF BASKET USED IN BASIC FUEL PRICE



### BASIC FUEL PRICE IN SA CENTS PER LITRE

