

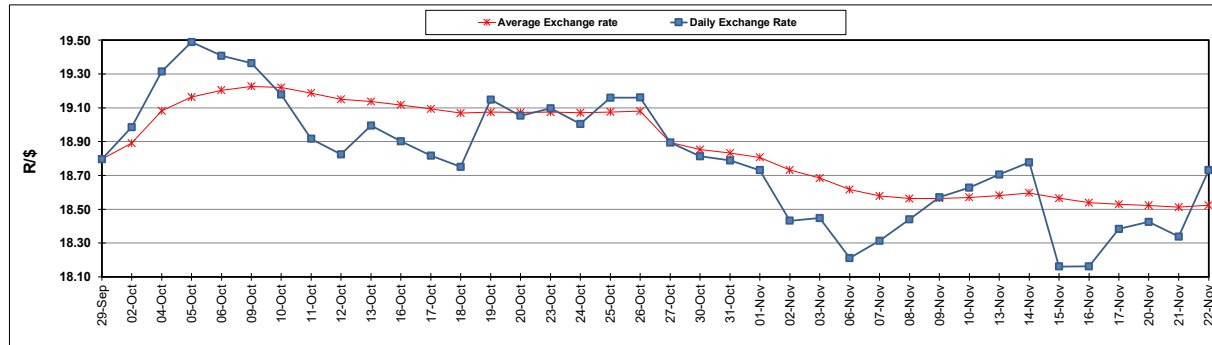
South African Cents per Litre (SA c/l)	PETROL 95 ULP	PETROL 93 ULP & LRP	DIESEL 0.05%	DIESEL 0.005%	ILL. PAR.
GAUTENG PUMP PRICE AS FROM 01/11/2023	2,390.000	2,344.000	-	-	-
WHOLESALE PRICE AS FROM 01/11/2023	-	-	2,416.910	2,440.310	1,795.058
SINGLE NATIONAL MAXIMUM RETAIL PRICE	-	-	-	-	2,333.000
BASIC FUEL PRICE - 22/11/2023	1,216.637	1,171.347	1,350.391	1,366.833	1,398.011
PRESS RELEASE CONTRIBUTION TO BFP 01/11/2023 - 22/11/2023	1,295.350	1,249.350	1,555.630	1,579.030	1,562.128
UNIT OVER/(UNDER) RECOVERY - 22/11/2023	78.713	78.003	205.239	212.197	164.117
AVERAGE BASIC FUEL PRICE 27/10/2023 - 22/11/2023	1,221.587	1,176.459	1,349.875	1,367.198	1,393.184
AVERAGE UNIT OVER/(UNDER) RECOVERY 27/10/2023 - 22/11/2023	105.329	104.457	222.650	228.253	184.260

ANALYSIS MOVEMENT OF AVERAGE OVER/(UNDER) RECOVERY

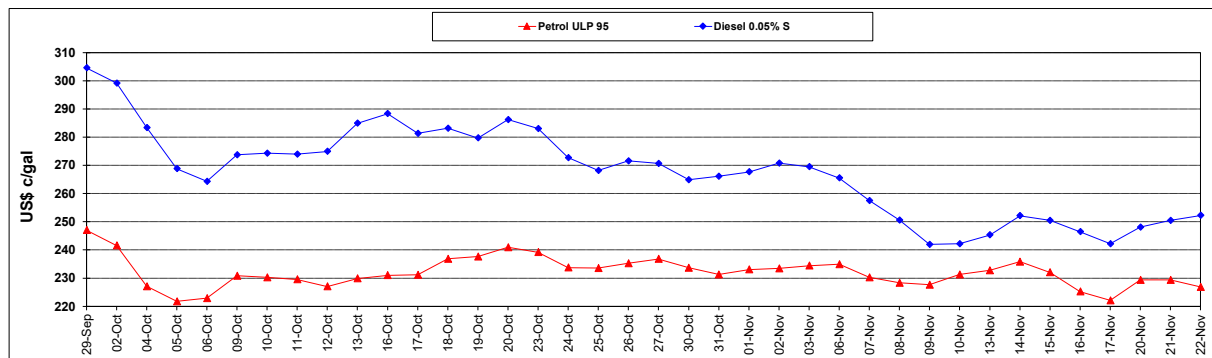
	PETROL 95	PETROL 93	DIESEL 0.05%	DIESEL 0.005%	ILL. PAR.
- MOVEMENT IN INTERNATIONAL PRODUCT PRICES	68.683	69.165	182.155	187.239	142.466
- MOVEMENT IN EXCHANGE RATE	36.646	35.292	40.495	41.014	41.794
AVERAGE UNIT OVER/(UNDER) RECOVERY 27/10/2023 - 22/11/2023	105.329	104.457	222.650	228.253	184.260

R/\$ EXCHANGE RATE - (R/\$18.7320 - 22/11/2023)

EXCHANGE RATE USED IN BASIC FUEL PRICE



INTERNATIONAL PRODUCT PRICES OF BASKET USED IN BASIC FUEL PRICE



BASIC FUEL PRICE IN SA CENTS PER LITRE

