

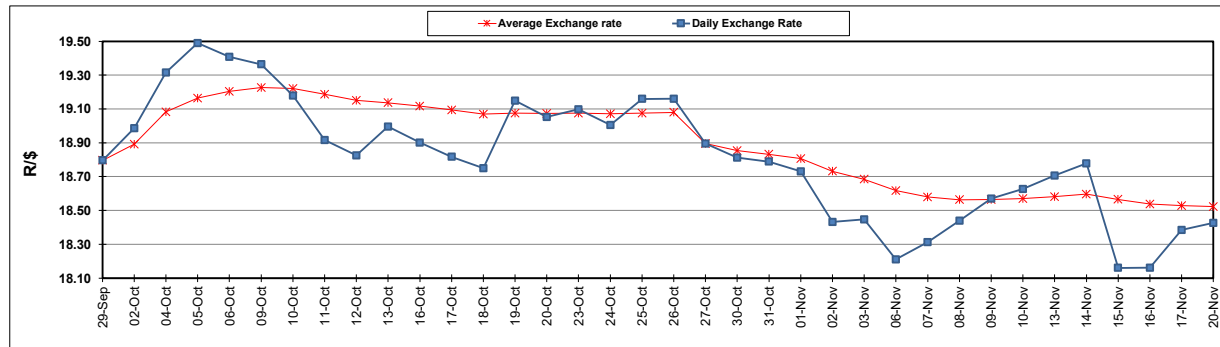
| South African Cents per Litre (SA c/l) | PETROL 95 ULP | PETROL 93 ULP & LRP | DIESEL 0.05% | DIESEL 0.005% | ILL. PAR. |
|--|---------------|---------------------|--------------|---------------|-----------|
| GAUTENG PUMP PRICE AS FROM 01/11/2023 | 2,390.000 | 2,344.000 | - | - | - |
| WHOLESALE PRICE AS FROM 01/11/2023 | - | - | 2,416.910 | 2,440.310 | 1,795.058 |
| SINGLE NATIONAL MAXIMUM RETAIL PRICE | - | - | - | - | 2,333.000 |
| BASIC FUEL PRICE - 20/11/2023 | 1,206.411 | 1,161.879 | 1,305.143 | 1,321.129 | 1,358.853 |
| PRESS RELEASE CONTRIBUTION TO BFP 01/11/2023 - 20/11/2023 | 1,295.350 | 1,249.350 | 1,555.630 | 1,579.030 | 1,562.128 |
| UNIT OVER/(UNDER) RECOVERY - 20/11/2023 | 88.939 | 87.471 | 250.487 | 257.901 | 203.275 |
| AVERAGE BASIC FUEL PRICE 27/10/2023 - 20/11/2023 | 1,222.854 | 1,177.689 | 1,351.853 | 1,369.396 | 1,394.634 |
| AVERAGE UNIT OVER/(UNDER) RECOVERY 27/10/2023 - 20/11/2023 | 107.776 | 106.941 | 222.659 | 227.987 | 184.612 |

ANALYSIS MOVEMENT OF AVERAGE OVER/(UNDER) RECOVERY

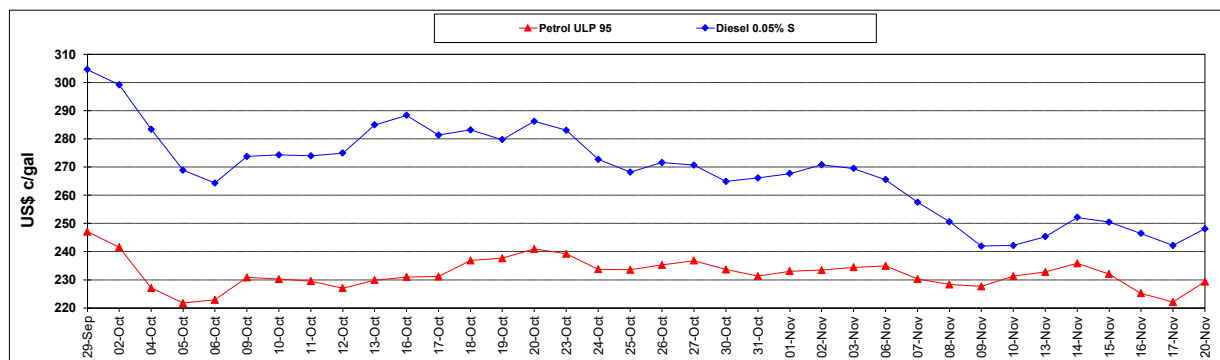
| | PETROL 95 | PETROL 93 | DIESEL 0.05% | DIESEL 0.005% | ILL. PAR. |
|--|-----------|-----------|--------------|---------------|-----------|
| - MOVEMENT IN INTERNATIONAL PRODUCT PRICES | 71.003 | 71.526 | 182.007 | 186.808 | 142.674 |
| - MOVEMENT IN EXCHANGE RATE | 36.773 | 35.415 | 40.652 | 41.179 | 41.938 |
| AVERAGE UNIT OVER/(UNDER) RECOVERY 27/10/2023 - 20/11/2023 | 107.776 | 106.941 | 222.659 | 227.987 | 184.612 |

R/\$ EXCHANGE RATE - (R/\$18.4260 - 20/11/2023)

EXCHANGE RATE USED IN BASIC FUEL PRICE



INTERNATIONAL PRODUCT PRICES OF BASKET USED IN BASIC FUEL PRICE



BASIC FUEL PRICE IN SA CENTS PER LITRE

