

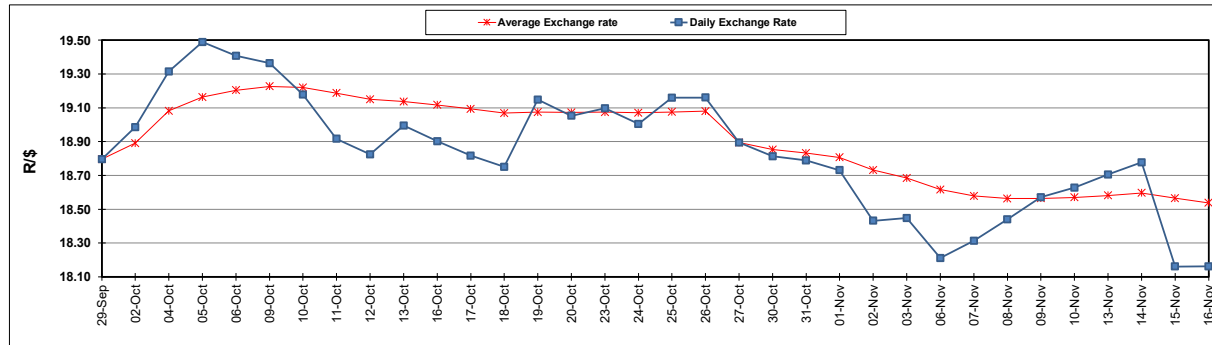
South African Cents per Litre (SA c/l)	PETROL 95 ULP	PETROL 93 ULP & LRP	DIESEL 0.05%	DIESEL 0.005%	ILL. PAR.
GAUTENG PUMP PRICE AS FROM 01/11/2023	2,390.000	2,344.000	-	-	-
WHOLESALE PRICE AS FROM 01/11/2023	-	-	2,416.910	2,440.310	1,795.058
SINGLE NATIONAL MAXIMUM RETAIL PRICE	-	-	-	-	2,333.000
BASIC FUEL PRICE - 16/11/2023	1,168.264	1,118.530	1,277.813	1,295.701	1,336.895
PRESS RELEASE CONTRIBUTION TO BFP 01/11/2023 - 16/11/2023	1,295.350	1,249.350	1,555.630	1,579.030	1,562.128
UNIT OVER/(UNDER) RECOVERY - 16/11/2023	127.086	130.820	277.817	283.329	225.233
AVERAGE BASIC FUEL PRICE 27/10/2023 - 16/11/2023	1,227.608	1,182.745	1,360.178	1,377.898	1,401.035
AVERAGE UNIT OVER/(UNDER) RECOVERY 27/10/2023 - 16/11/2023	107.726	106.589	216.852	221.932	180.493

### ANALYSIS MOVEMENT OF AVERAGE OVER/(UNDER) RECOVERY

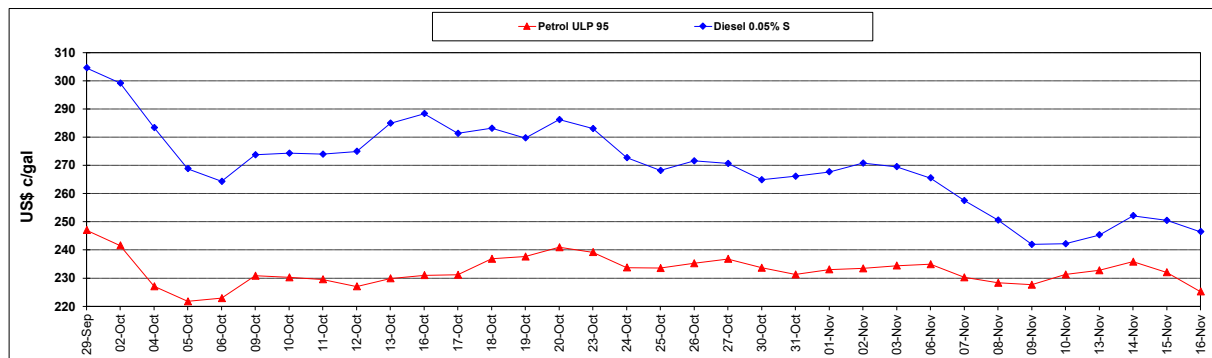
	PETROL 95	PETROL 93	DIESEL 0.05%	DIESEL 0.005%	ILL. PAR.
- MOVEMENT IN INTERNATIONAL PRODUCT PRICES	71.881	72.054	177.136	181.699	139.584
- MOVEMENT IN EXCHANGE RATE	35.845	34.535	39.716	40.233	40.909
AVERAGE UNIT OVER/(UNDER) RECOVERY 27/10/2023 - 16/11/2023	107.726	106.589	216.852	221.932	180.493

### R/\$ EXCHANGE RATE - (R/\$18.1618 - 16/11/2023)

#### EXCHANGE RATE USED IN BASIC FUEL PRICE



#### INTERNATIONAL PRODUCT PRICES OF BASKET USED IN BASIC FUEL PRICE



#### BASIC FUEL PRICE IN SA CENTS PER LITRE

