

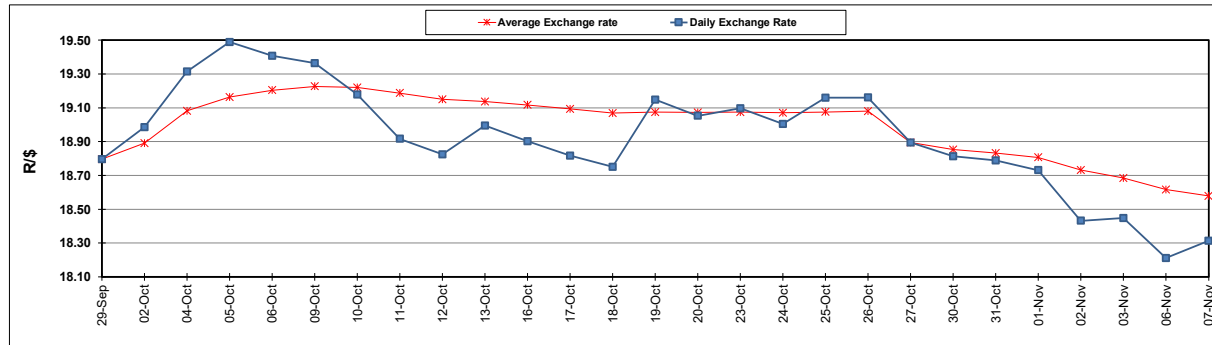
South African Cents per Litre (SA c/l)	PETROL 95 ULP	PETROL 93 ULP & LRP	DIESEL 0.05%	DIESEL 0.005%	ILL. PAR.
GAUTENG PUMP PRICE AS FROM 01/11/2023	2,390.000	2,344.000	-	-	-
WHOLESALE PRICE AS FROM 01/11/2023	-	-	2,416.910	2,440.310	1,795.058
SINGLE NATIONAL MAXIMUM RETAIL PRICE	-	-	-	-	2,333.000
BASIC FUEL PRICE - 07/11/2023	1,201.744	1,162.892	1,341.538	1,358.927	1,390.789
PRESS RELEASE CONTRIBUTION TO BFP 01/11/2023 - 07/11/2023	1,295.350	1,249.350	1,555.630	1,579.030	1,562.128
UNIT OVER/(UNDER) RECOVERY - 07/11/2023	93.606	86.458	214.092	220.103	171.339
AVERAGE BASIC FUEL PRICE 27/10/2023 - 07/11/2023	1,239.606	1,198.443	1,410.911	1,427.271	1,440.942
AVERAGE UNIT OVER/(UNDER) RECOVERY 27/10/2023 - 07/11/2023	130.714	125.876	184.843	190.759	157.561

ANALYSIS MOVEMENT OF AVERAGE OVER/(UNDER) RECOVERY

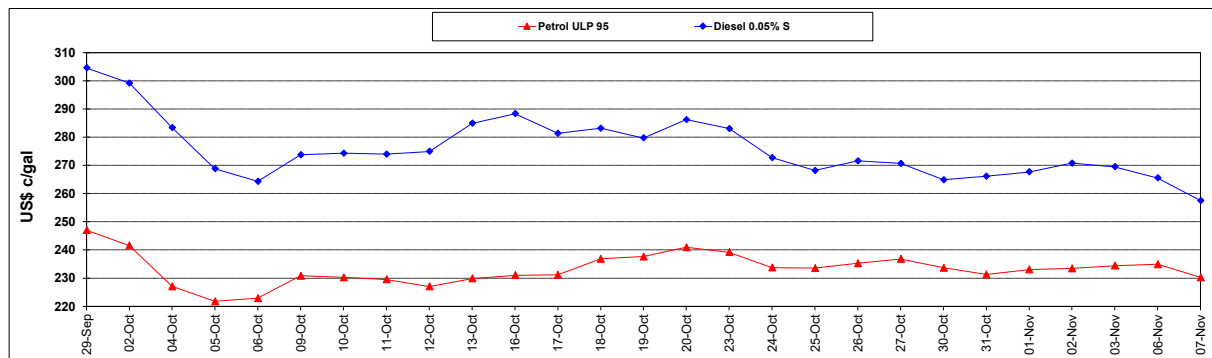
	PETROL 95	PETROL 93	DIESEL 0.05%	DIESEL 0.005%	ILL. PAR.
- MOVEMENT IN INTERNATIONAL PRODUCT PRICES	97.300	93.573	146.812	152.286	118.720
- MOVEMENT IN EXCHANGE RATE	33.414	32.304	38.032	38.473	38.841
AVERAGE UNIT OVER/(UNDER) RECOVERY 27/10/2023 - 07/11/2023	130.714	125.876	184.843	190.759	157.561

R/\$ EXCHANGE RATE - (R/\$18.3133 - 07/11/2023)

EXCHANGE RATE USED IN BASIC FUEL PRICE



INTERNATIONAL PRODUCT PRICES OF BASKET USED IN BASIC FUEL PRICE



BASIC FUEL PRICE IN SA CENTS PER LITRE

