

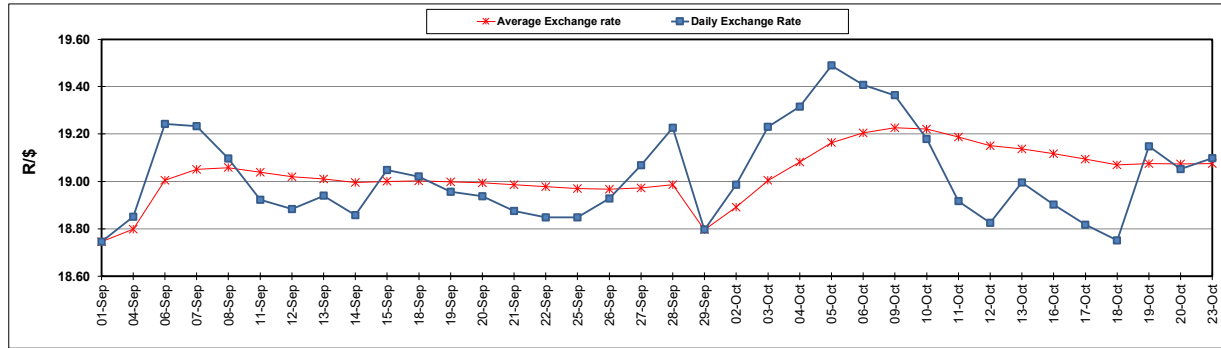
South African Cents per Litre (SA c/l)	PETROL 95 ULP	PETROL 93 ULP & LRP	DIESEL 0.05%	DIESEL 0.005%	ILL. PAR.
GAUTENG PUMP PRICE AS FROM 04/10/2023	2,568.000	2,522.000	-	-	-
WHOLESALE PRICE AS FROM 04/10/2023	-	-	2,501.990	2,522.390	1,892.058
SINGLE NATIONAL MAXIMUM RETAIL PRICE	-	-	-	-	2,463.000
BASIC FUEL PRICE - 23/10/2023	1,311.019	1,273.247	1,546.927	1,561.237	1,561.749
PRESS RELEASE CONTRIBUTION TO BFP 03/10/2023 - 23/10/2023	1,495.270	1,449.270	1,662.630	1,683.030	1,659.128
UNIT OVER/(UNDER) RECOVERY - 23/10/2023	184.251	176.023	115.703	121.793	97.379
AVERAGE BASIC FUEL PRICE 29/09/2023 - 23/10/2023	1,281.779	1,242.113	1,539.609	1,564.588	1,546.675
AVERAGE UNIT OVER/(UNDER) RECOVERY 29/09/2023 - 23/10/2023	198.791	193.516	93.727	89.676	85.806

ANALYSIS MOVEMENT OF AVERAGE OVER/(UNDER) RECOVERY

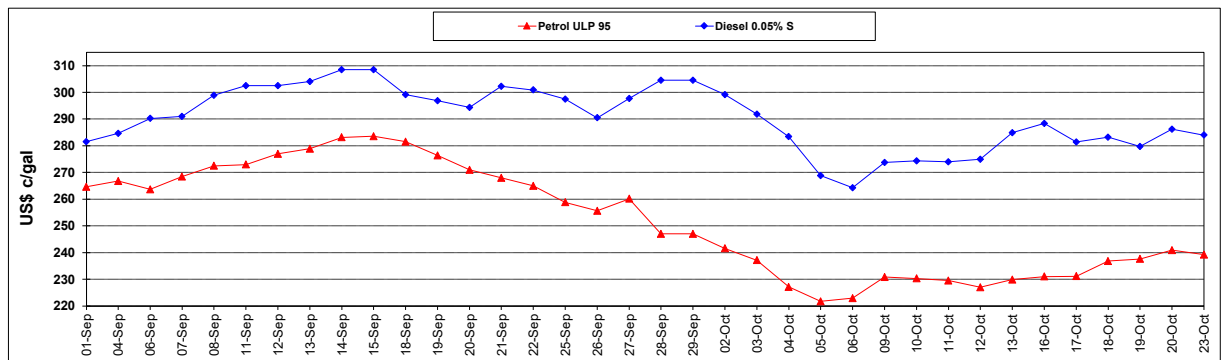
	PETROL 95	PETROL 93	DIESEL 0.05%	DIESEL 0.005%	ILL. PAR.
- MOVEMENT IN INTERNATIONAL PRODUCT PRICES	204.798	199.338	100.943	97.010	93.055
- MOVEMENT IN EXCHANGE RATE	(6.007)	(5.822)	(7.216)	(7.333)	(7.249)
AVERAGE UNIT OVER/(UNDER) RECOVERY 29/09/2023 - 23/10/2023	198.791	193.516	93.727	89.676	85.806

R/\$ EXCHANGE RATE - (R/\$19.0975 - 23/10/2023)

EXCHANGE RATE USED IN BASIC FUEL PRICE



INTERNATIONAL PRODUCT PRICES OF BASKET USED IN BASIC FUEL PRICE



BASIC FUEL PRICE IN SA CENTS PER LITRE

