

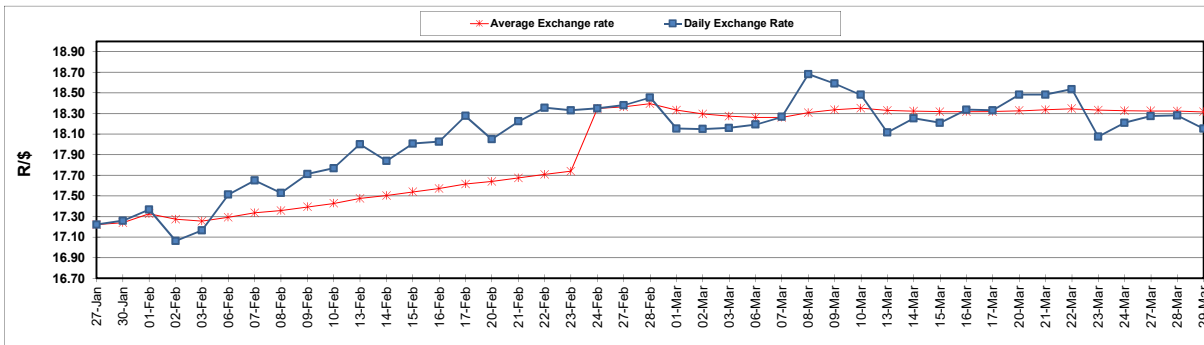
South African Cents per Litre (SA c/l)	PETROL 95 ULP	PETROL 93 ULP & LRP	DIESEL 0.05%	DIESEL 0.005%	ILL. PAR.
GAUTENG PUMP PRICE AS FROM 01/03/2123	2,295.000	2,265.000	-	-	-
WHOLESALE PRICE AS FROM 01/03/2123	-	-	2,162.410	2,171.810	1,596.958
SINGLE NATIONAL MAXIMUM RETAIL PRICE	-	-	-	-	2,104.000
BASIC FUEL PRICE - 29/03/2023	1,241.436	1,205.925	1,191.784	1,200.883	1,154.383
PRESS RELEASE CONTRIBUTION TO BFP 01/03/2023 - 29/03/2023	1,244.850	1,214.850	1,340.630	1,350.030	1,378.128
UNIT OVER/(UNDER) RECOVERY - 29/03/2023	3.414	8.925	148.846	149.147	223.745
AVERAGE BASIC FUEL PRICE 24/02/2023 - 29/03/2023	1,228.923	1,196.797	1,263.496	1,272.150	1,241.501
AVERAGE UNIT OVER/(UNDER) RECOVERY 24/02/2023 - 29/03/2023	0.600	2.726	73.884	74.506	135.002

ANALYSIS MOVEMENT OF AVERAGE OVER/(UNDER) RECOVERY

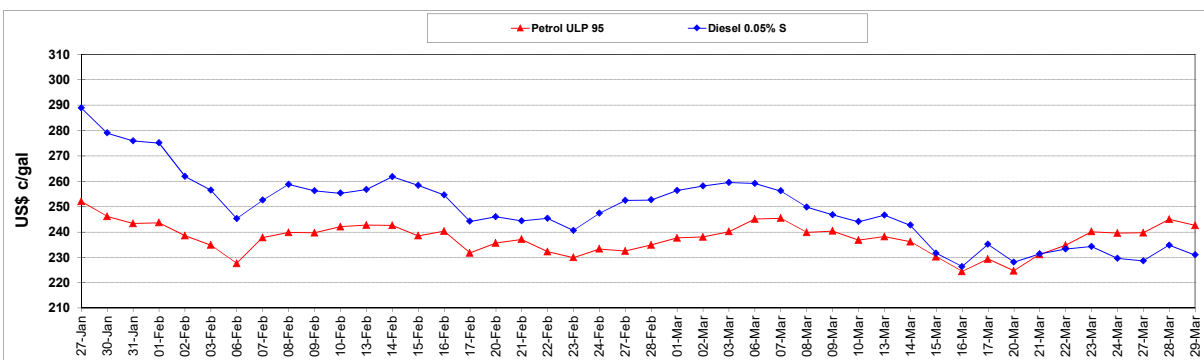
	PETROL 95	PETROL 93	DIESEL 0.05%	DIESEL 0.005%	ILL. PAR.
- MOVEMENT IN INTERNATIONAL PRODUCT PRICES	39.227	40.343	113.598	114.491	174.024
- MOVEMENT IN EXCHANGE RATE	(38.627)	(37.617)	(39.714)	(39.986)	(39.022)
AVERAGE UNIT OVER/(UNDER) RECOVERY 24/02/2023 - 29/03/2023	0.600	2.726	73.884	74.506	135.002

R/\$ EXCHANGE RATE - (R/\$18.1525 - 29/03/2023)

EXCHANGE RATE USED IN BASIC FUEL PRICE



INTERNATIONAL PRODUCT PRICES OF BASKET USED IN BASIC FUEL PRICE



BASIC FUEL PRICE IN SA CENTS PER LITRE

