

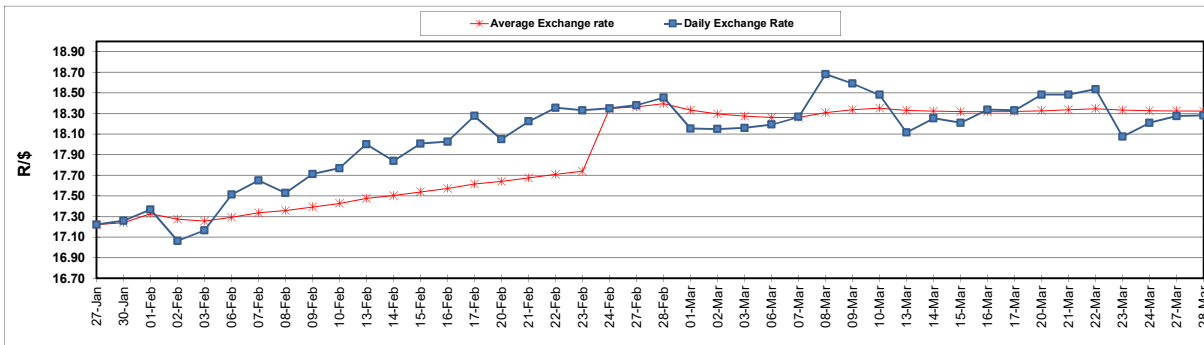
South African Cents per Litre (SA c/l)	PETROL 95 ULP	PETROL 93 ULP & LRP	DIESEL 0.05%	DIESEL 0.005%	ILL. PAR.
GAUTENG PUMP PRICE AS FROM 01/03/2123	2,295.000	2,265.000	-	-	-
WHOLESALE PRICE AS FROM 01/03/2123	-	-	2,162.410	2,171.810	1,596.958
SINGLE NATIONAL MAXIMUM RETAIL PRICE	-	-	-	-	2,104.000
BASIC FUEL PRICE - 28/03/2023	1,261.629	1,225.867	1,218.886	1,228.584	1,181.187
PRESS RELEASE CONTRIBUTION TO BFP 01/03/2023 - 28/03/2023	1,244.850	1,214.850	1,340.630	1,350.030	1,378.128
UNIT OVER/(UNDER) RECOVERY - 28/03/2023	(16.779)	(11.017)	121.744	121.446	196.941
AVERAGE BASIC FUEL PRICE 24/02/2023 - 28/03/2023	1,228.379	1,196.400	1,266.614	1,275.248	1,245.289
AVERAGE UNIT OVER/(UNDER) RECOVERY 24/02/2023 - 28/03/2023	0.478	2.456	70.625	71.260	131.144

ANALYSIS MOVEMENT OF AVERAGE OVER/(UNDER) RECOVERY

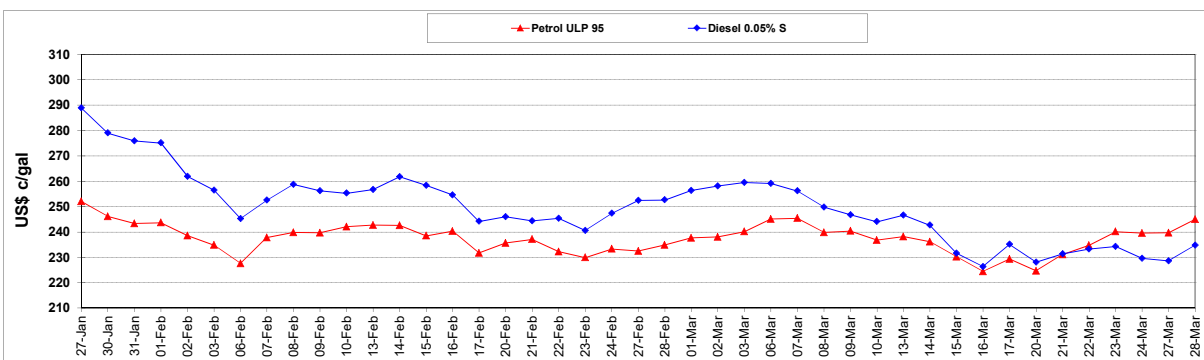
	PETROL 95	PETROL 93	DIESEL 0.05%	DIESEL 0.005%	ILL. PAR.
- MOVEMENT IN INTERNATIONAL PRODUCT PRICES	39.548	40.510	110.912	111.822	170.752
- MOVEMENT IN EXCHANGE RATE	(39.071)	(38.054)	(40.287)	(40.562)	(39.609)
AVERAGE UNIT OVER/(UNDER) RECOVERY 24/02/2023 - 28/03/2023	0.478	2.456	70.625	71.260	131.144

R/\$ EXCHANGE RATE - (R/\$18.2800 - 28/03/2023)

EXCHANGE RATE USED IN BASIC FUEL PRICE



INTERNATIONAL PRODUCT PRICES OF BASKET USED IN BASIC FUEL PRICE



BASIC FUEL PRICE IN SA CENTS PER LITRE

