

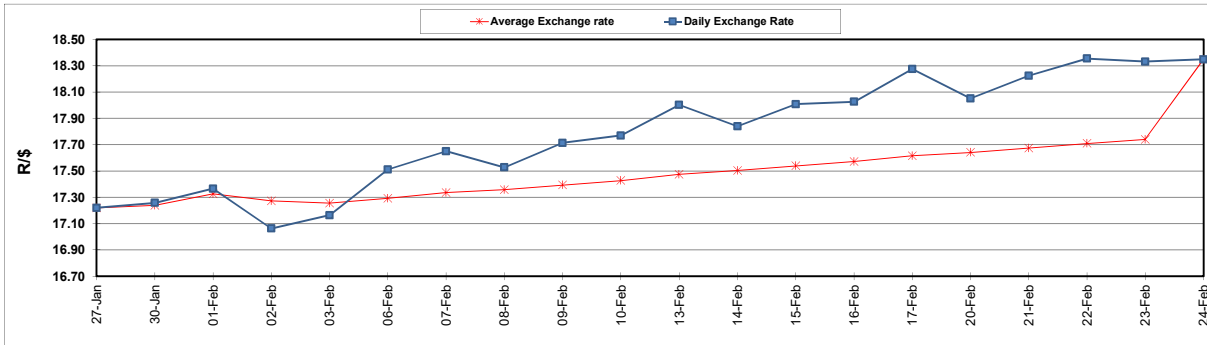
South African Cents per Litre (SA c/l)	PETROL 95 ULP	PETROL 93 ULP & LRP	DIESEL 0.05%	DIESEL 0.005%	ILL. PAR.
GAUTENG PUMP PRICE AS FROM 01/03/2023	2,295.000	2,265.000	-	-	-
WHOLESALE PRICE AS FROM 01/03/2023	-	-	2,162.410	2,171.810	1,596.958
SINGLE NATIONAL MAXIMUM RETAIL PRICE	-	-	-	-	2,104.000
BASIC FUEL PRICE - 24/02/2023	1,251.152	1,221.913	1,329.552	1,336.672	1,337.408
PRESS RELEASE CONTRIBUTION TO BFP 24/02/2023 - 24/02/2023	1,122.230	1,092.230	1,314.630	1,323.030	1,365.128
UNIT OVER/(UNDER) RECOVERY - 24/02/2023	(128.922)	(129.683)	(14.922)	(13.642)	27.720
AVERAGE BASIC FUEL PRICE 24/02/2023 - 24/02/2023	1,251.152	1,221.913	1,329.552	1,336.672	1,337.408
AVERAGE UNIT OVER/(UNDER) RECOVERY 24/02/2023 - 24/02/2023	(128.922)	(129.683)	(14.922)	(13.642)	27.720

ANALYSIS MOVEMENT OF AVERAGE OVER/(UNDER) RECOVERY

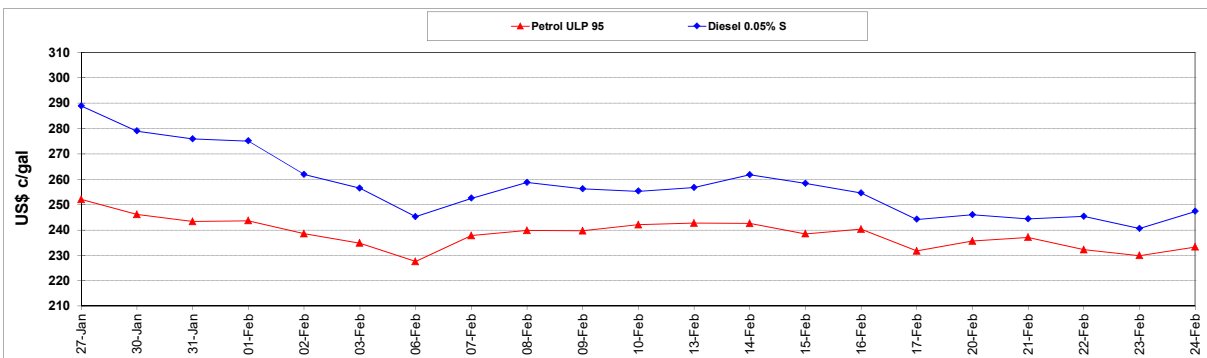
	PETROL 95	PETROL 93	DIESEL 0.05%	DIESEL 0.005%	ILL. PAR.
- MOVEMENT IN INTERNATIONAL PRODUCT PRICES	(87.509)	(89.238)	29.086	30.602	71.988
- MOVEMENT IN EXCHANGE RATE	(41.413)	(40.445)	(44.008)	(44.244)	(44.268)
AVERAGE UNIT OVER/(UNDER) RECOVERY 24/02/2023 - 24/02/2023	(128.922)	(129.683)	(14.922)	(13.642)	27.720

R/\$ EXCHANGE RATE - (R/\$18.3475 - 24/02/2023)

EXCHANGE RATE USED IN BASIC FUEL PRICE



INTERNATIONAL PRODUCT PRICES OF BASKET USED IN BASIC FUEL PRICE



BASIC FUEL PRICE IN SA CENTS PER LITRE

