

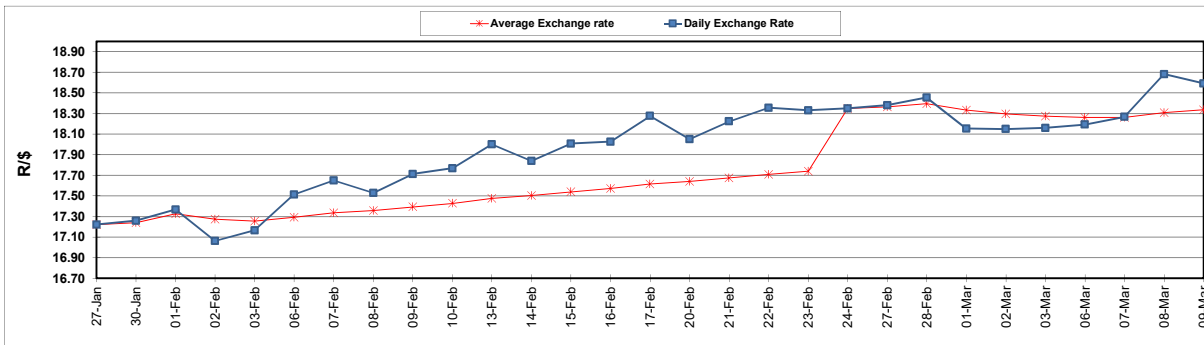
South African Cents per Litre (SA c/l)	PETROL 95 ULP	PETROL 93 ULP & LRP	DIESEL 0.05%	DIESEL 0.005%	ILL. PAR.
GAUTENG PUMP PRICE AS FROM 01/03/2023	2,295.000	2,265.000	-	-	-
WHOLESALE PRICE AS FROM 01/03/2023	-	-	2,162.410	2,171.810	1,596.958
SINGLE NATIONAL MAXIMUM RETAIL PRICE	-	-	-	-	2,104.000
BASIC FUEL PRICE - 09/03/2023	1,260.349	1,227.586	1,298.527	1,307.526	1,282.241
PRESS RELEASE CONTRIBUTION TO BFP 01/03/2023 - 09/03/2023	1,244.850	1,214.850	1,340.630	1,350.030	1,378.128
UNIT OVER/(UNDER) RECOVERY - 09/03/2023	(15.499)	(12.736)	42.103	42.504	95.887
AVERAGE BASIC FUEL PRICE 24/02/2023 - 09/03/2023	1,247.774	1,218.163	1,328.806	1,336.520	1,327.768
AVERAGE UNIT OVER/(UNDER) RECOVERY 24/02/2023 - 09/03/2023	(39.710)	(40.099)	4.024	5.410	46.460

ANALYSIS MOVEMENT OF AVERAGE OVER/(UNDER) RECOVERY

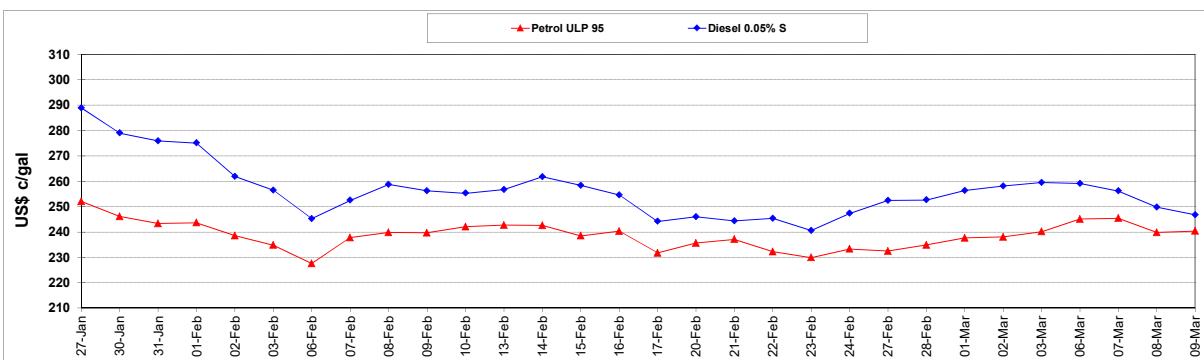
	PETROL 95	PETROL 93	DIESEL 0.05%	DIESEL 0.005%	ILL. PAR.
- MOVEMENT IN INTERNATIONAL PRODUCT PRICES	0.907	(0.446)	47.279	48.916	89.681
- MOVEMENT IN EXCHANGE RATE	(40.617)	(39.653)	(43.255)	(43.506)	(43.221)
AVERAGE UNIT OVER/(UNDER) RECOVERY 24/02/2023 - 09/03/2023	(39.710)	(40.099)	4.024	5.410	46.460

R/\$ EXCHANGE RATE - (R/\$18.5915 - 09/03/2023)

EXCHANGE RATE USED IN BASIC FUEL PRICE



INTERNATIONAL PRODUCT PRICES OF BASKET USED IN BASIC FUEL PRICE



BASIC FUEL PRICE IN SA CENTS PER LITRE

