

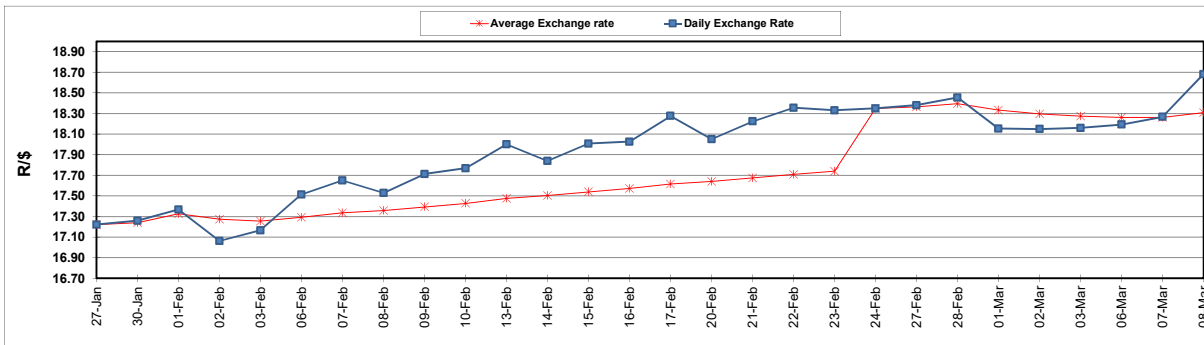
South African Cents per Litre (SA c/l)	PETROL 95 ULP	PETROL 93 ULP & LRP	DIESEL 0.05%	DIESEL 0.005%	ILL. PAR.
GAUTENG PUMP PRICE AS FROM 01/03/2023	2,295.000	2,265.000	-	-	-
WHOLESALE PRICE AS FROM 01/03/2023	-	-	2,162.410	2,171.810	1,596.958
SINGLE NATIONAL MAXIMUM RETAIL PRICE	-	-	-	-	2,104.000
BASIC FUEL PRICE - 08/03/2023	1,263.611	1,230.763	1,319.965	1,329.479	1,306.017
PRESS RELEASE CONTRIBUTION TO BFP 01/03/2023 - 08/03/2023	1,244.850	1,214.850	1,340.630	1,350.030	1,378.128
UNIT OVER/(UNDER) RECOVERY - 08/03/2023	(18.761)	(15.913)	20.665	20.551	72.111
AVERAGE BASIC FUEL PRICE 24/02/2023 - 08/03/2023	1,246.376	1,217.115	1,332.170	1,339.742	1,332.827
AVERAGE UNIT OVER/(UNDER) RECOVERY 24/02/2023 - 08/03/2023	(42.400)	(43.139)	(0.207)	1.288	40.968

ANALYSIS MOVEMENT OF AVERAGE OVER/(UNDER) RECOVERY

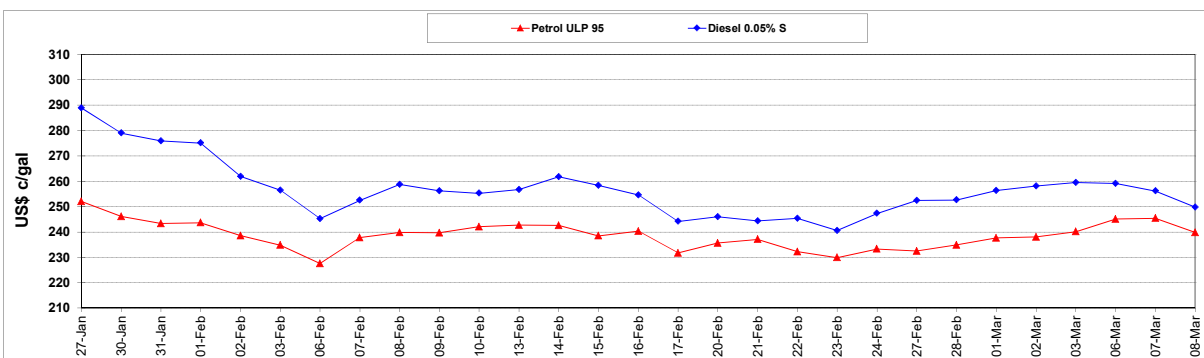
	PETROL 95	PETROL 93	DIESEL 0.05%	DIESEL 0.005%	ILL. PAR.
- MOVEMENT IN INTERNATIONAL PRODUCT PRICES	(3.691)	(5.339)	41.165	42.895	82.360
- MOVEMENT IN EXCHANGE RATE	(38.708)	(37.799)	(41.372)	(41.607)	(41.392)
AVERAGE UNIT OVER/(UNDER) RECOVERY 24/02/2023 - 08/03/2023	(42.400)	(43.139)	(0.207)	1.288	40.968

R/\$ EXCHANGE RATE - (R/\$18.6813 - 08/03/2023)

EXCHANGE RATE USED IN BASIC FUEL PRICE



INTERNATIONAL PRODUCT PRICES OF BASKET USED IN BASIC FUEL PRICE



BASIC FUEL PRICE IN SA CENTS PER LITRE

