

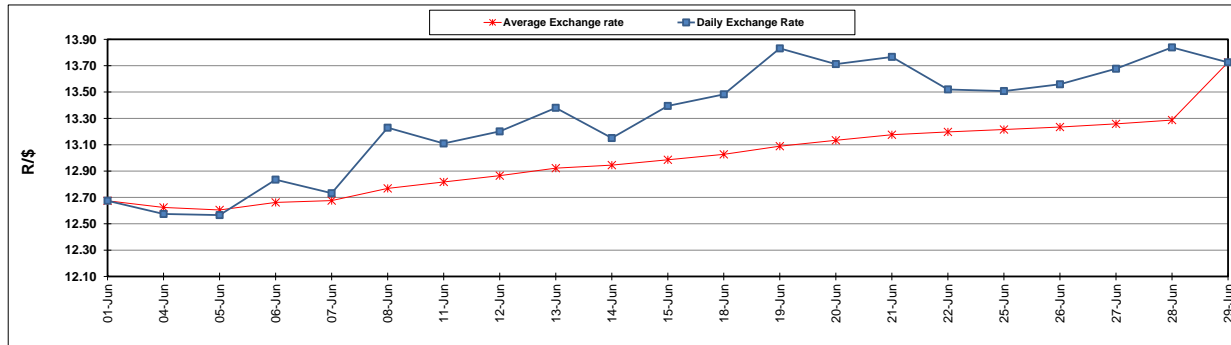
	PETROL 95 ULP	PETROL 93 ULP & LRP	DIESEL 0.05%	DIESEL 0.005%	ILL. PAR.
GAUTENG PUMP PRICE (SA c/l) AS FROM 04/07/2018	1 602.000	1 581.000	-	-	-
WHOLESALE PRICE (SA c/l) AS FROM 04/07/2018	-	-	1 444.830	1 449.230	949.088
SINGLE NATIONAL MAXIMUM RETAIL PRICE	-	-	-	-	1 228.000
BASIC FUEL PRICE - 29/06/2018 (SA c/l)	781.782	770.553	796.066	800.585	806.042
PRESS RELEASE CONTRIBUTION TO BFP 29/09/2018 - 29/06/2018 (SA c/l)	727.070	712.070	745.630	752.030	754.128
UNIT OVER/(UNDER) RECOVERY - 29/06/2018 (SA c/l)	(54.712)	(58.483)	(50.436)	(48.555)	(51.914)
AVERAGE BASIC FUEL PRICE 29/06/2018 - 29/06/2018	781.782	770.553	796.066	800.585	806.042
AVERAGE UNIT OVER/(UNDER) RECOVERY 29/06/2018 - 29/06/2018	(54.712)	(58.483)	(50.436)	(48.555)	(51.914)

ANALYSIS MOVEMENT OF AVERAGE OVER/(UNDER) RECOVERY

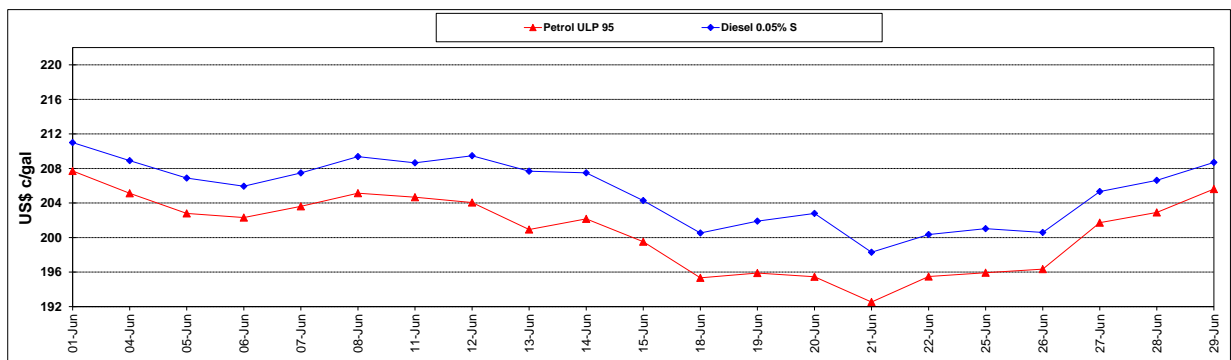
	PETROL 95	PETROL 93	DIESEL 0.05%	DIESEL 0.005%	ILL. PAR.
- MOVEMENT IN INTERNATIONAL PRODUCT PRICES	(29.752)	(33.882)	(25.020)	(22.995)	(26.180)
- MOVEMENT IN EXCHANGE RATE	(24.960)	(24.601)	(25.416)	(25.560)	(25.734)
AVERAGE UNIT OVER/(UNDER) RECOVERY 29/06/2018 - 29/06/2018	(54.712)	(58.483)	(50.436)	(48.555)	(51.914)

R/\$ EXCHANGE RATE - (R/\$13.7253 - 29/06/2018)

EXCHANGE RATE USED IN BASIC FUEL PRICE



INTERNATIONAL PRODUCT PRICES OF BASKET USED IN BASIC FUEL PRICE



BASIC FUEL PRICE IN SA CENTS PER LITRE

