

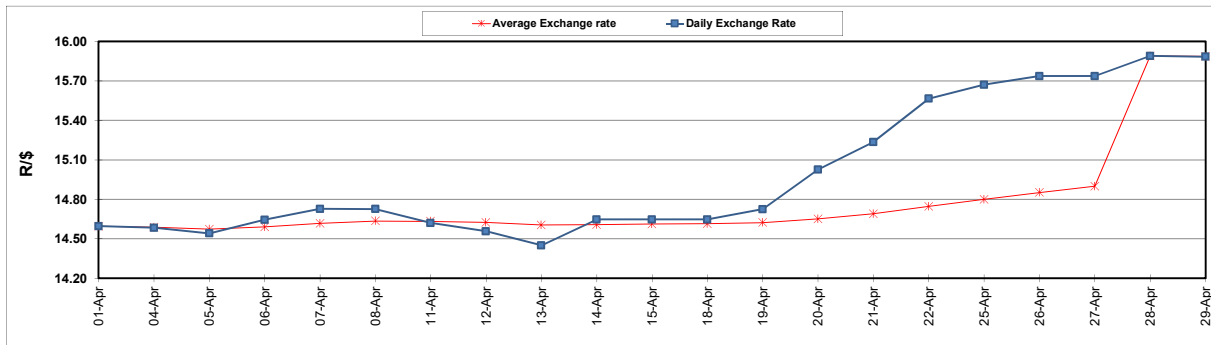
	PETROL 95 ULP	PETROL 93 ULP & LRP	DIESEL 0.05%	DIESEL 0.005%	ILL. PAR.
GAUTENG PUMP PRICE (SA c/l) AS FROM 04/05/2022	2,184.000	2,151.000	-	-	-
WHOLESALE PRICE (SA c/l) AS FROM 04/05/2022	-	-	2,199.440	2,215.840	1,664.288
SINGLE NATIONAL MAXIMUM RETAIL PRICE	-	-	-	-	2,194.000
BASIC FUEL PRICE - 29/04/2022 (SA c/l)	1,413.818	1,385.629	1,659.393	1,676.979	1,651.547
PRESS RELEASE CONTRIBUTION TO BFP 28/04/2022 - 29/04/2022 (SA c/l)	1,278.710	1,255.710	1,402.630	1,425.030	1,363.128
UNIT OVER/(UNDER) RECOVERY - 29/04/2022 (SA c/l)	(135.108)	(129.919)	(256.763)	(251.949)	(288.419)
AVERAGE BASIC FUEL PRICE 28/04/2022 - 29/04/2022	1,404.451	1,376.248	1,640.628	1,657.681	1,630.553
AVERAGE UNIT OVER/(UNDER) RECOVERY 28/04/2022 - 29/04/2022	(125.741)	(120.538)	(237.998)	(232.651)	(267.425)

ANALYSIS MOVEMENT OF AVERAGE OVER/(UNDER) RECOVERY

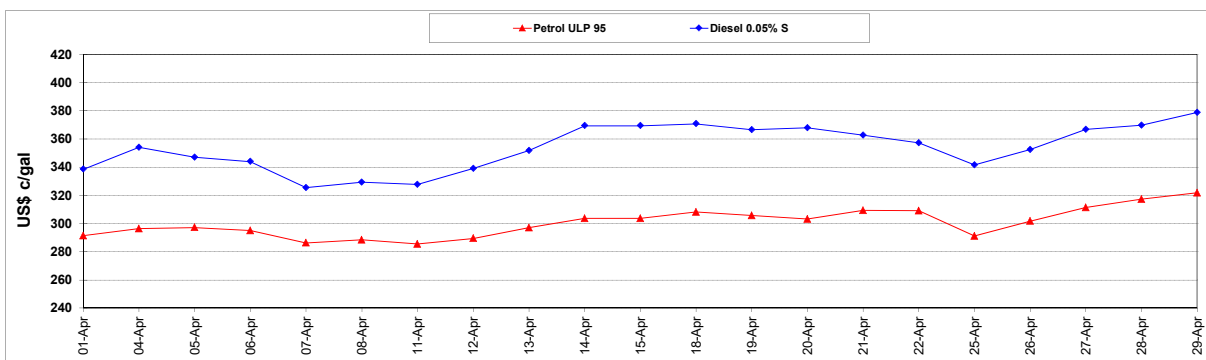
	PETROL 95	PETROL 93	DIESEL 0.05%	DIESEL 0.005%	ILL. PAR.
- MOVEMENT IN INTERNATIONAL PRODUCT PRICES	(38.449)	(34.999)	(136.027)	(129.620)	(166.080)
- MOVEMENT IN EXCHANGE RATE	(87.292)	(85.539)	(101.971)	(103.031)	(101.345)
AVERAGE UNIT OVER/(UNDER) RECOVERY 28/04/2022 - 29/04/2022	(125.741)	(120.538)	(237.998)	(232.651)	(267.425)

R/\$ EXCHANGE RATE - (R/\$15.8825 - 29/04/2022)

EXCHANGE RATE USED IN BASIC FUEL PRICE



INTERNATIONAL PRODUCT PRICES OF BASKET USED IN BASIC FUEL PRICE



BASIC FUEL PRICE IN SA CENTS PER LITRE

