

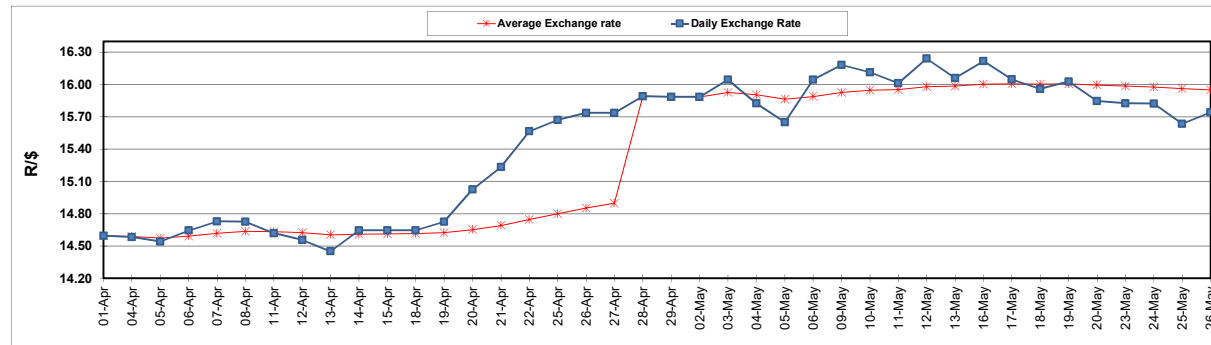
	PETROL 95 ULP	PETROL 93 ULP & LRP	DIESEL 0.05%	DIESEL 0.005%	ILL. PAR.
GAUTENG PUMP PRICE (SA c/l) AS FROM 04/05/2022	2,184.000	2,151.000	-	-	-
WHOLESALE PRICE (SA c/l) AS FROM 04/05/2022	-	-	2,199.440	2,215.840	1,664.288
SINGLE NATIONAL MAXIMUM RETAIL PRICE	-	-	-	-	2,194.000
BASIC FUEL PRICE - 26/05/2022 (SA c/l)	1,590.947	1,536.738	1,555.522	1,568.685	1,561.529
PRESS RELEASE CONTRIBUTION TO BFP 04/05/2022 - 26/05/2022 (SA c/l)	1,264.410	1,241.410	1,497.630	1,514.030	1,446.128
UNIT OVER/(UNDER) RECOVERY - 26/05/2022 (SA c/l)	(326.537)	(295.328)	(57.892)	(54.655)	(115.401)
AVERAGE BASIC FUEL PRICE 28/04/2022 - 26/05/2022	1,510.012	1,475.544	1,588.978	1,603.458	1,585.645
AVERAGE UNIT OVER/(UNDER) RECOVERY 28/04/2022 - 26/05/2022	(242.878)	(231.410)	(109.443)	(106.380)	(155.327)

ANALYSIS MOVEMENT OF AVERAGE OVER/(UNDER) RECOVERY

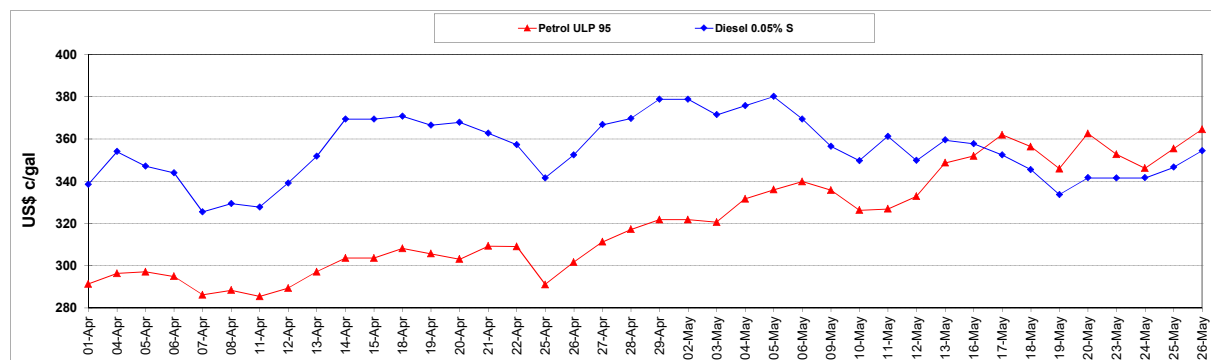
	PETROL 95	PETROL 93	DIESEL 0.05%	DIESEL 0.005%	ILL. PAR.
- MOVEMENT IN INTERNATIONAL PRODUCT PRICES	(143.391)	(134.194)	(4.754)	(0.737)	(50.857)
- MOVEMENT IN EXCHANGE RATE	(99.487)	(97.216)	(104.689)	(105.643)	(104.470)
AVERAGE UNIT OVER/(UNDER) RECOVERY 28/04/2022 - 26/05/2022	(242.878)	(231.410)	(109.443)	(106.380)	(155.327)

R/\$ EXCHANGE RATE - (R/\$15.7400 - 26/05/2022)

EXCHANGE RATE USED IN BASIC FUEL PRICE



INTERNATIONAL PRODUCT PRICES OF BASKET USED IN BASIC FUEL PRICE



BASIC FUEL PRICE IN SA CENTS PER LITRE

