

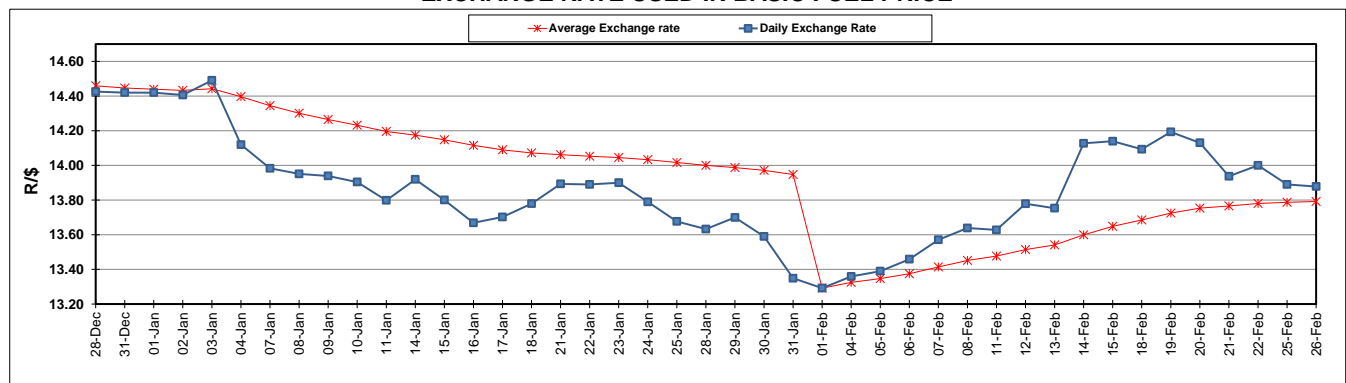
	PETROL 95 ULP	PETROL 93 ULP & LRP	DIESEL 0.05%	DIESEL 0.005%	ILL. PAR.
GAUTENG PUMP PRICE (SA c/l) AS FROM 06/02/2019	1 408.000	1 386.000	-	-	-
WHOLESALE PRICE (SA c/l) AS FROM 06/02/2019	-	-	1 314.420	1 318.820	823.678
SINGLE NATIONAL MAXIMUM RETAIL PRICE	-	-	-	-	1 060.000
BASIC FUEL PRICE - 26/02/2019 (SA c/l)	637.736	627.208	746.574	752.825	733.835
PRESS RELEASE CONTRIBUTION TO BFP 06/02/2019 - 26/02/2019 (SA c/l)	543.470	531.470	636.630	641.030	646.128
UNIT OVER/(UNDER) RECOVERY - 26/02/2019 (SA c/l)	(94.266)	(95.738)	(109.944)	(111.795)	(87.707)
AVERAGE BASIC FUEL PRICE 01/02/2019 - 26/02/2019	612.860	601.682	724.336	730.345	719.976
AVERAGE UNIT OVER/(UNDER) RECOVERY 01/02/2019 - 26/02/2019	(70.556)	(71.378)	(87.872)	(89.649)	(73.015)

ANALYSIS MOVEMENT OF AVERAGE OVER/(UNDER) RECOVERY

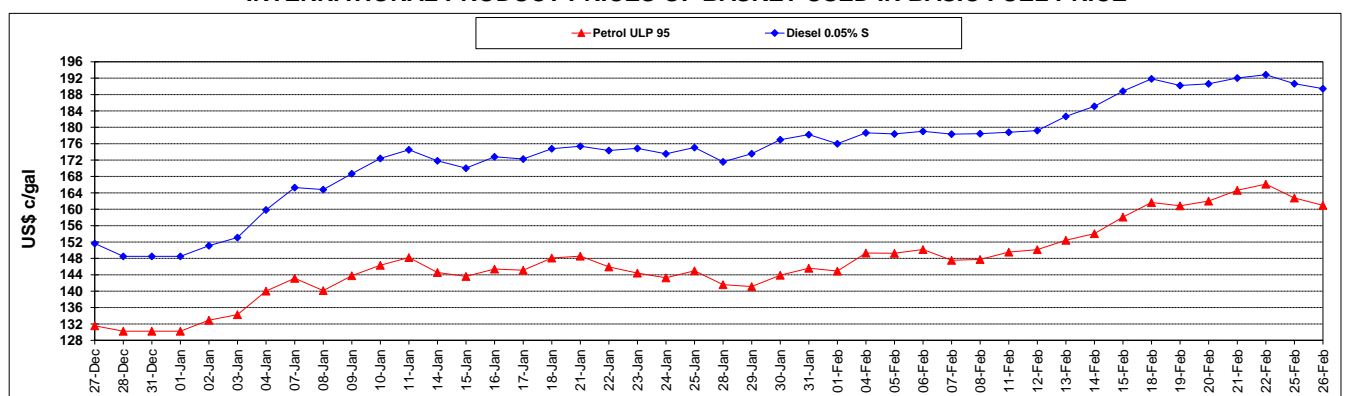
	PETROL 95	PETROL 93	DIESEL 0.05%	DIESEL 0.005%	ILL. PAR.
- MOVEMENT IN INTERNATIONAL PRODUCT PRICES	(78.538)	(79.214)	(97.305)	(99.159)	(82.391)
- MOVEMENT IN EXCHANGE RATE	7.981	7.835	9.432	9.511	9.376
AVERAGE UNIT OVER/(UNDER) RECOVERY 01/02/2019 - 26/02/2019	(70.556)	(71.378)	(87.872)	(89.649)	(73.015)

R/\$ EXCHANGE RATE - (R/\$13.8780 - 26/02/2019)

EXCHANGE RATE USED IN BASIC FUEL PRICE



INTERNATIONAL PRODUCT PRICES OF BASKET USED IN BASIC FUEL PRICE



BASIC FUEL PRICE IN SA CENTS PER LITRE

