

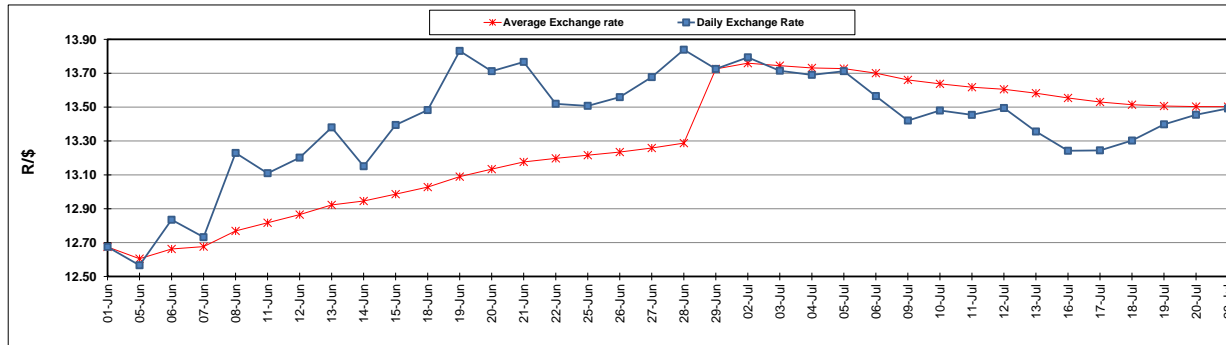
	PETROL 95 ULP	PETROL 93 ULP & LRP	DIESEL 0.05%	DIESEL 0.005%	ILL. PAR.
GAUTENG PUMP PRICE (SA c/l) AS FROM 04/07/2018	1 602.000	1 581.000	-	-	-
WHOLESALE PRICE (SA c/l) AS FROM 04/07/2018	-	-	1 444.830	1 449.230	949.088
SINGLE NATIONAL MAXIMUM RETAIL PRICE	-	-	-	-	1 228.000
BASIC FUEL PRICE - 23/07/2018 (SA c/l)	744.259	730.496	757.545	763.335	769.074
PRESS RELEASE CONTRIBUTION TO BFP 04/07/2018 - 23/07/2018 (SA c/l)	750.070	739.070	771.630	776.030	776.128
UNIT OVER/(UNDER) RECOVERY - 23/07/2018 (SA c/l)	5.811	8.574	14.085	12.695	7.054
AVERAGE BASIC FUEL PRICE 29/06/2018 - 23/07/2018	747.371	736.520	763.834	769.037	777.683
AVERAGE UNIT OVER/(UNDER) RECOVERY 29/06/2018 - 23/07/2018	(1.360)	(2.214)	3.208	2.758	(5.437)

### ANALYSIS MOVEMENT OF AVERAGE OVER/(UNDER) RECOVERY

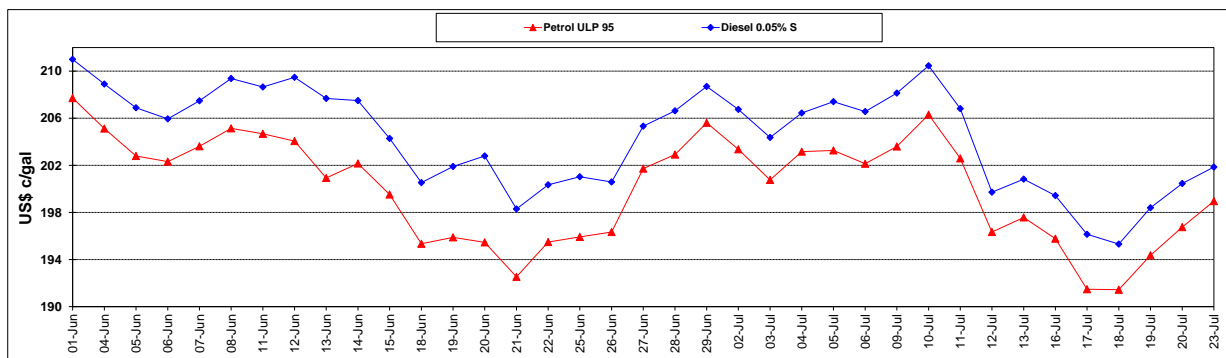
	PETROL 95	PETROL 93	DIESEL 0.05%	DIESEL 0.005%	ILL. PAR.
- MOVEMENT IN INTERNATIONAL PRODUCT PRICES	10.552	9.524	15.382	15.015	6.958
- MOVEMENT IN EXCHANGE RATE	(11.912)	(11.739)	(12.174)	(12.257)	(12.395)
AVERAGE UNIT OVER/(UNDER) RECOVERY 29/06/2018 - 23/07/2018	(1.360)	(2.214)	3.208	2.758	(5.437)

### R/\$ EXCHANGE RATE - (R/\$13.4920 - 23/07/2018)

#### EXCHANGE RATE USED IN BASIC FUEL PRICE



#### INTERNATIONAL PRODUCT PRICES OF BASKET USED IN BASIC FUEL PRICE



#### BASIC FUEL PRICE IN SA CENTS PER LITRE

