

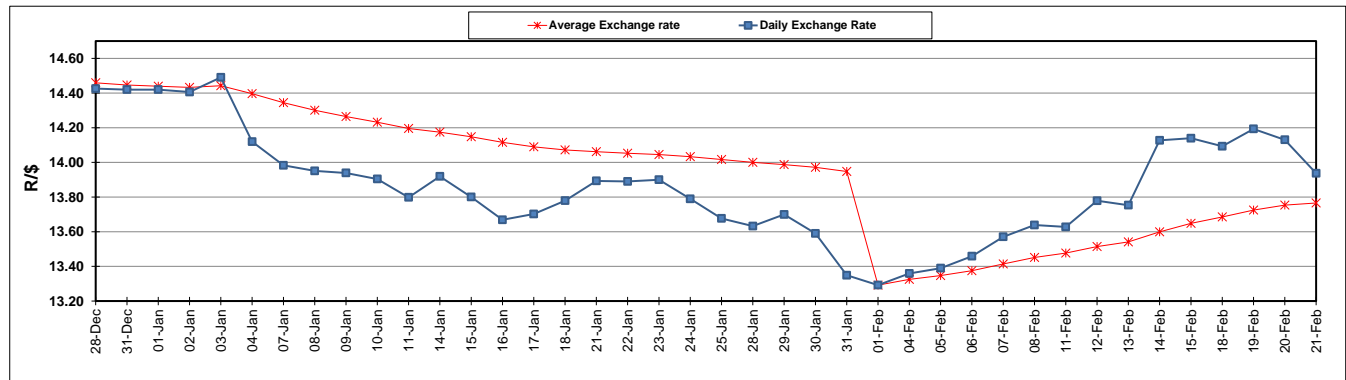
	PETROL 95 ULP	PETROL 93 ULP & LRP	DIESEL 0.05%	DIESEL 0.005%	ILL. PAR.
GAUTENG PUMP PRICE (SA c/l) AS FROM 06/02/2019	1 408.000	1 386.000	-	-	-
WHOLESALE PRICE (SA c/l) AS FROM 06/02/2019	-	-	1 314.420	1 318.820	823.678
SINGLE NATIONAL MAXIMUM RETAIL PRICE	-	-	-	-	1 060.000
BASIC FUEL PRICE - 21/02/2019 (SA c/l)	653.982	644.058	759.414	765.495	751.900
PRESS RELEASE CONTRIBUTION TO BFP 06/02/2019 - 21/02/2019 (SA c/l)	543.470	531.470	636.630	641.030	646.128
UNIT OVER/(UNDER) RECOVERY - 21/02/2019 (SA c/l)	(110.512)	(112.588)	(122.784)	(124.465)	(105.772)
AVERAGE BASIC FUEL PRICE 01/02/2019 - 21/02/2019	605.755	594.614	718.270	724.200	715.229
AVERAGE UNIT OVER/(UNDER) RECOVERY 01/02/2019 - 21/02/2019	(63.685)	(64.544)	(81.840)	(83.570)	(68.101)

### ANALYSIS MOVEMENT OF AVERAGE OVER/(UNDER) RECOVERY

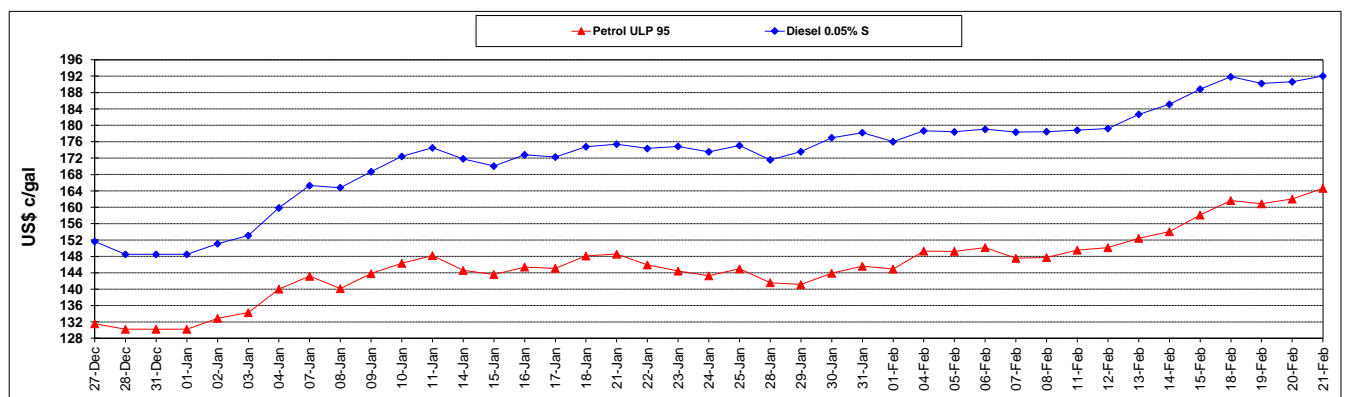
	PETROL 95	PETROL 93	DIESEL 0.05%	DIESEL 0.005%	ILL. PAR.
- MOVEMENT IN INTERNATIONAL PRODUCT PRICES	(72.737)	(73.429)	(92.573)	(94.392)	(78.789)
- MOVEMENT IN EXCHANGE RATE	9.052	8.885	10.733	10.822	10.688
AVERAGE UNIT OVER/(UNDER) RECOVERY 01/02/2019 - 21/02/2019	(63.685)	(64.544)	(81.840)	(83.570)	(68.101)

### R/\$ EXCHANGE RATE - (R/\$13.9373 - 21/02/2019)

### EXCHANGE RATE USED IN BASIC FUEL PRICE



### INTERNATIONAL PRODUCT PRICES OF BASKET USED IN BASIC FUEL PRICE



### BASIC FUEL PRICE IN SA CENTS PER LITRE

