

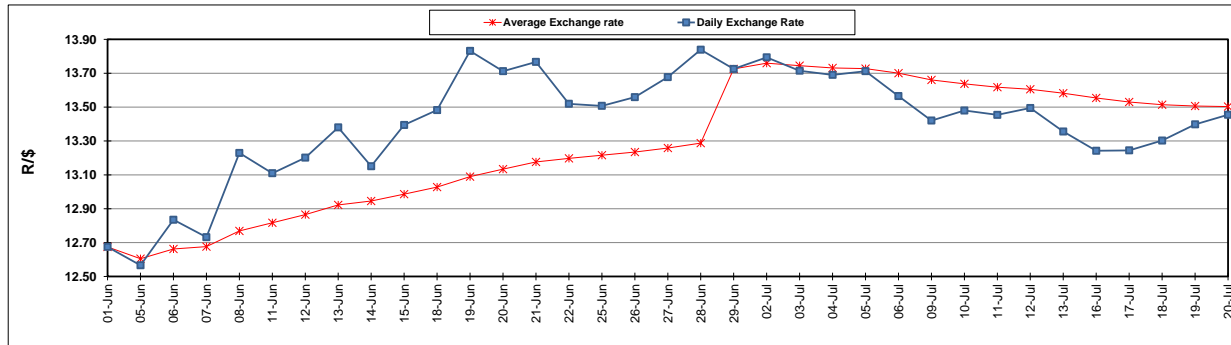
	PETROL 95 ULP	PETROL 93 ULP & LRP	DIESEL 0.05%	DIESEL 0.005%	ILL. PAR.
GAUTENG PUMP PRICE (SA c/l) AS FROM 04/07/2018	1 602.000	1 581.000	-	-	-
WHOLESALE PRICE (SA c/l) AS FROM 04/07/2018	-	-	1 444.830	1 449.230	949.088
SINGLE NATIONAL MAXIMUM RETAIL PRICE	-	-	-	-	1 228.000
BASIC FUEL PRICE - 20/07/2018 (SA c/l)	734.375	721.099	750.465	756.104	761.892
PRESS RELEASE CONTRIBUTION TO BFP 04/07/2018 - 20/07/2018 (SA c/l)	750.070	739.070	771.630	776.030	776.128
UNIT OVER/(UNDER) RECOVERY - 20/07/2018 (SA c/l)	15.695	17.971	21.165	19.926	14.236
AVERAGE BASIC FUEL PRICE 29/06/2018 - 20/07/2018	747.566	736.896	764.227	769.393	778.221
AVERAGE UNIT OVER/(UNDER) RECOVERY 29/06/2018 - 20/07/2018	(1.809)	(2.889)	2.528	2.137	(6.218)

### ANALYSIS MOVEMENT OF AVERAGE OVER/(UNDER) RECOVERY

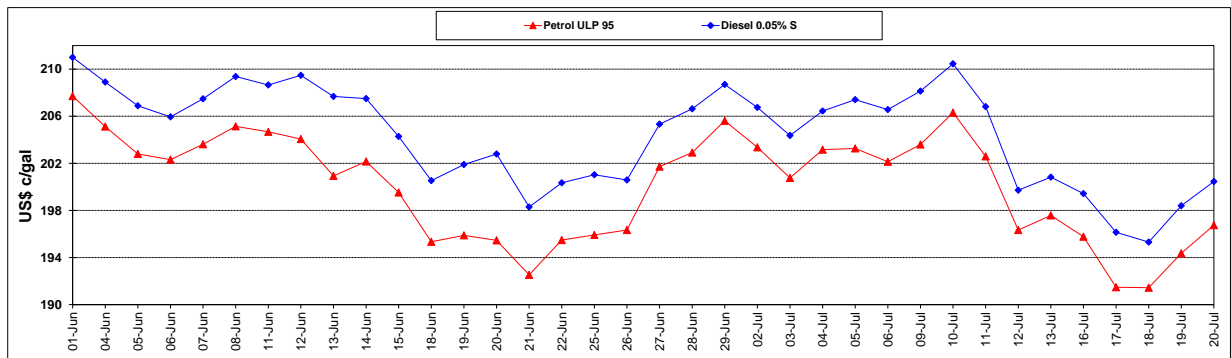
	PETROL 95	PETROL 93	DIESEL 0.05%	DIESEL 0.005%	ILL. PAR.
- MOVEMENT IN INTERNATIONAL PRODUCT PRICES	10.145	8.894	14.747	14.439	6.225
- MOVEMENT IN EXCHANGE RATE	(11.953)	(11.782)	(12.219)	(12.302)	(12.443)
AVERAGE UNIT OVER/(UNDER) RECOVERY 29/06/2018 - 20/07/2018	(1.809)	(2.889)	2.528	2.137	(6.218)

### R/\$ EXCHANGE RATE - (R/\$13.4548 - 20/07/2018)

#### EXCHANGE RATE USED IN BASIC FUEL PRICE



#### INTERNATIONAL PRODUCT PRICES OF BASKET USED IN BASIC FUEL PRICE



#### BASIC FUEL PRICE IN SA CENTS PER LITRE

