

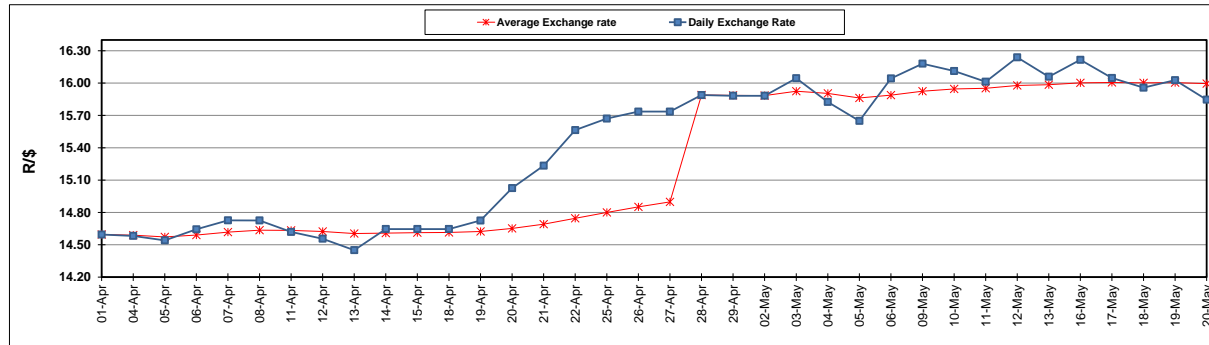
	PETROL 95 ULP	PETROL 93 ULP & LRP	DIESEL 0.05%	DIESEL 0.005%	ILL. PAR.
GAUTENG PUMP PRICE (SA c/l) AS FROM 04/05/2022	2,184.000	2,151.000	-	-	-
WHOLESALE PRICE (SA c/l) AS FROM 04/05/2022	-	-	2,199.440	2,215.840	1,664.288
SINGLE NATIONAL MAXIMUM RETAIL PRICE	-	-	-	-	2,194.000
BASIC FUEL PRICE - 20/05/2022 (SA c/l)	1,593.014	1,538.456	1,511.903	1,523.637	1,495.921
PRESS RELEASE CONTRIBUTION TO BFP 04/05/2022 - 20/05/2022 (SA c/l)	1,264.410	1,241.410	1,497.630	1,514.030	1,446.128
UNIT OVER/(UNDER) RECOVERY - 20/05/2022 (SA c/l)	(328.604)	(297.046)	(14.273)	(9.607)	(49.793)
AVERAGE BASIC FUEL PRICE 28/04/2022 - 20/05/2022	1,500.333	1,470.520	1,604.792	1,619.622	1,599.876
AVERAGE UNIT OVER/(UNDER) RECOVERY 28/04/2022 - 20/05/2022	(232.558)	(225.745)	(129.515)	(126.533)	(173.277)

ANALYSIS MOVEMENT OF AVERAGE OVER/(UNDER) RECOVERY

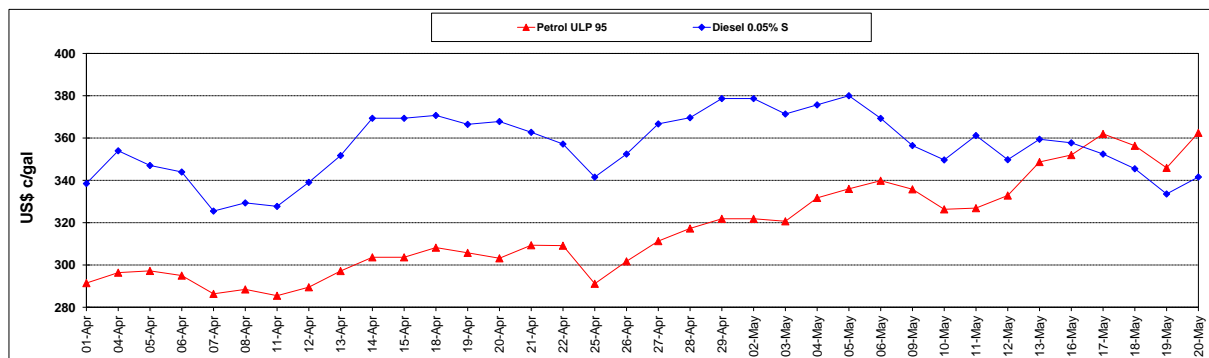
	PETROL 95	PETROL 93	DIESEL 0.05%	DIESEL 0.005%	ILL. PAR.
- MOVEMENT IN INTERNATIONAL PRODUCT PRICES	(129.696)	(124.927)	(19.491)	(15.493)	(63.591)
- MOVEMENT IN EXCHANGE RATE	(102.862)	(100.818)	(110.024)	(111.040)	(109.686)
AVERAGE UNIT OVER/(UNDER) RECOVERY 28/04/2022 - 20/05/2022	(232.558)	(225.745)	(129.515)	(126.533)	(173.277)

R/\$ EXCHANGE RATE - (R/\$15.8460 - 20/05/2022)

EXCHANGE RATE USED IN BASIC FUEL PRICE



INTERNATIONAL PRODUCT PRICES OF BASKET USED IN BASIC FUEL PRICE



BASIC FUEL PRICE IN SA CENTS PER LITRE

