

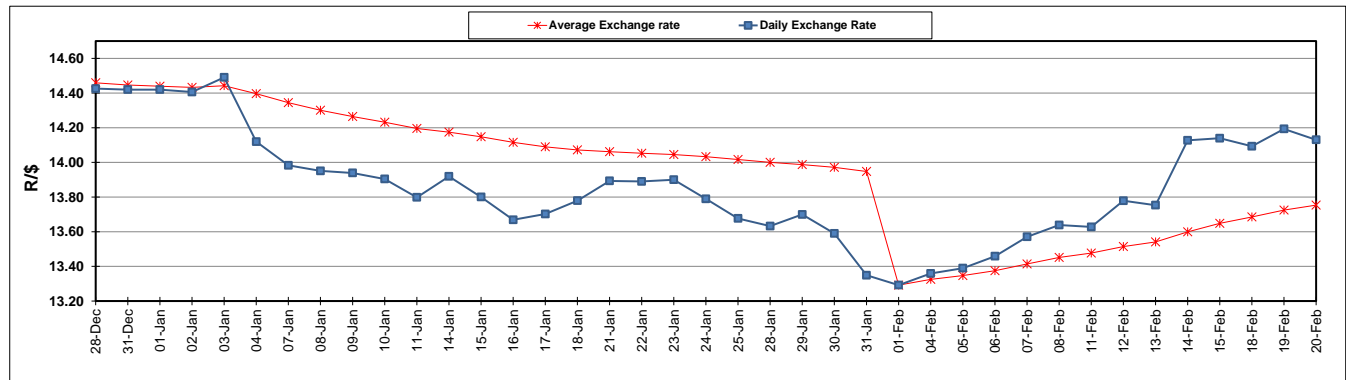
	PETROL 95 ULP	PETROL 93 ULP & LRP	DIESEL 0.05%	DIESEL 0.005%	ILL. PAR.
GAUTENG PUMP PRICE (SA c/l) AS FROM 06/02/2019	1 408.000	1 386.000	-	-	-
WHOLESALE PRICE (SA c/l) AS FROM 06/02/2019	-	-	1 314.420	1 318.820	823.678
SINGLE NATIONAL MAXIMUM RETAIL PRICE	-	-	-	-	1 060.000
BASIC FUEL PRICE - 20/02/2019 (SA c/l)	653.043	643.807	764.469	770.751	756.696
PRESS RELEASE CONTRIBUTION TO BFP 06/02/2019 - 20/02/2019 (SA c/l)	543.470	531.470	636.630	641.030	646.128
UNIT OVER/(UNDER) RECOVERY - 20/02/2019 (SA c/l)	(109.573)	(112.337)	(127.839)	(129.721)	(110.568)
AVERAGE BASIC FUEL PRICE 01/02/2019 - 20/02/2019	602.310	591.083	715.331	721.251	712.610
AVERAGE UNIT OVER/(UNDER) RECOVERY 01/02/2019 - 20/02/2019	(60.340)	(61.113)	(78.915)	(80.649)	(65.411)

### ANALYSIS MOVEMENT OF AVERAGE OVER/(UNDER) RECOVERY

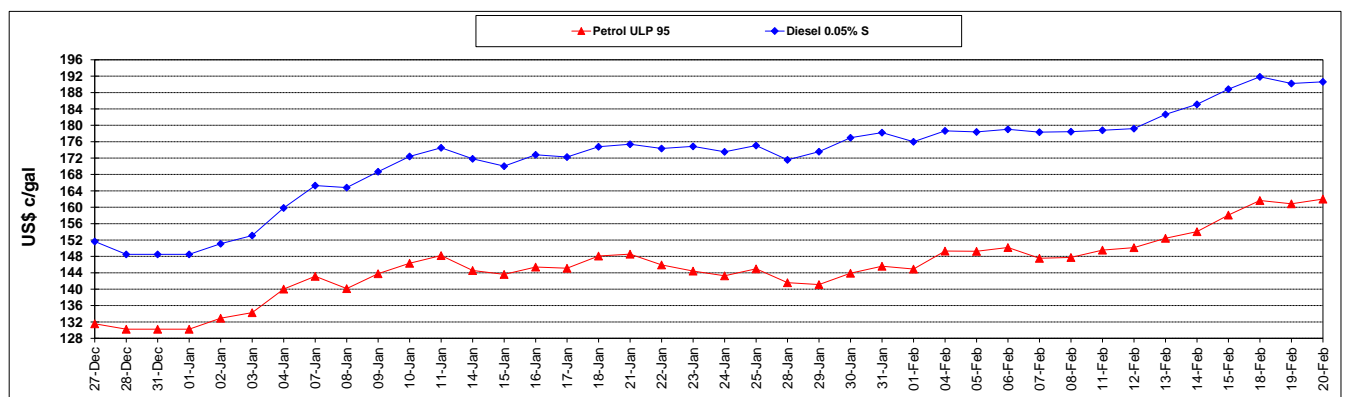
	PETROL 95	PETROL 93	DIESEL 0.05%	DIESEL 0.005%	ILL. PAR.
- MOVEMENT IN INTERNATIONAL PRODUCT PRICES	(69.887)	(70.482)	(90.253)	(92.082)	(76.706)
- MOVEMENT IN EXCHANGE RATE	9.547	9.369	11.338	11.432	11.295
AVERAGE UNIT OVER/(UNDER) RECOVERY 01/02/2019 - 20/02/2019	(60.340)	(61.113)	(78.915)	(80.649)	(65.411)

**R/\$ EXCHANGE RATE - (R/\$14.1300 - 20/02/2019)**

### EXCHANGE RATE USED IN BASIC FUEL PRICE



### INTERNATIONAL PRODUCT PRICES OF BASKET USED IN BASIC FUEL PRICE



### BASIC FUEL PRICE IN SA CENTS PER LITRE

