

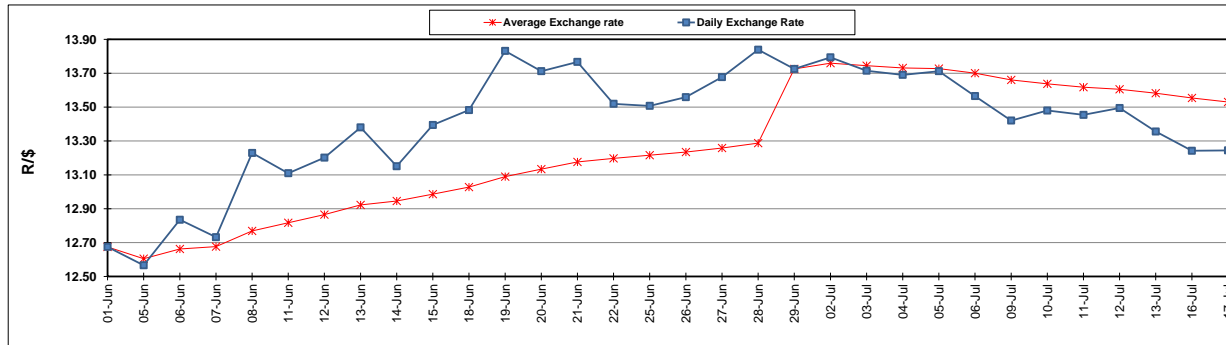
	PETROL 95 ULP	PETROL 93 ULP & LRP	DIESEL 0.05%	DIESEL 0.005%	ILL. PAR.
GAUTENG PUMP PRICE (SA c/l) AS FROM 04/07/2018	1 602.000	1 581.000	-	-	-
WHOLESALE PRICE (SA c/l) AS FROM 04/07/2018	-	-	1 444.830	1 449.230	949.088
SINGLE NATIONAL MAXIMUM RETAIL PRICE	-	-	-	-	1 228.000
BASIC FUEL PRICE - 17/07/2018 (SA c/l)	704.460	694.066	723.694	729.126	736.858
PRESS RELEASE CONTRIBUTION TO BFP 04/07/2018 - 17/07/2018 (SA c/l)	750.070	739.070	771.630	776.030	776.128
UNIT OVER/(UNDER) RECOVERY - 17/07/2018 (SA c/l)	45.610	45.004	47.936	46.904	39.270
AVERAGE BASIC FUEL PRICE 29/06/2018 - 17/07/2018	753.578	743.414	770.251	775.350	784.587
AVERAGE UNIT OVER/(UNDER) RECOVERY 29/06/2018 - 17/07/2018	(8.815)	(10.575)	(4.621)	(4.859)	(13.536)

ANALYSIS MOVEMENT OF AVERAGE OVER/(UNDER) RECOVERY

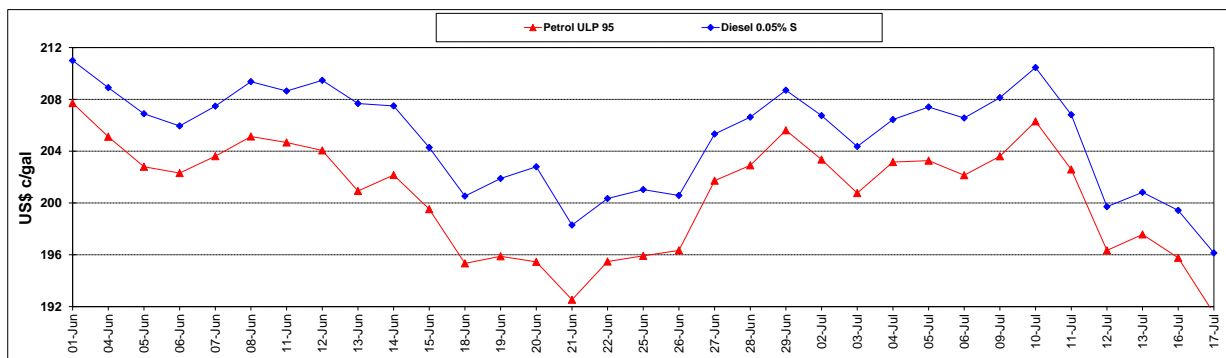
	PETROL 95	PETROL 93	DIESEL 0.05%	DIESEL 0.005%	ILL. PAR.
- MOVEMENT IN INTERNATIONAL PRODUCT PRICES	4.724	2.782	9.218	9.073	0.561
- MOVEMENT IN EXCHANGE RATE	(13.540)	(13.357)	(13.839)	(13.931)	(14.097)
AVERAGE UNIT OVER/(UNDER) RECOVERY 29/06/2018 - 17/07/2018	(8.815)	(10.575)	(4.621)	(4.859)	(13.536)

R/\$ EXCHANGE RATE - (R/\$13.2445 - 17/07/2018)

EXCHANGE RATE USED IN BASIC FUEL PRICE



INTERNATIONAL PRODUCT PRICES OF BASKET USED IN BASIC FUEL PRICE



BASIC FUEL PRICE IN SA CENTS PER LITRE

