

	PETROL 95 ULP	PETROL 93 ULP & LRP	DIESEL 0.05%	DIESEL 0.005%	ILL. PAR.
GAUTENG PUMP PRICE (SA c/l) AS FROM 04/05/2022	2,184.000	2,151.000	-	-	-
WHOLESALE PRICE (SA c/l) AS FROM 04/05/2022	-	-	2,199.440	2,215.840	1,664.288
SINGLE NATIONAL MAXIMUM RETAIL PRICE	-	-	-	-	2,194.000
BASIC FUEL PRICE - 16/05/2022 (SA c/l)	1,584.155	1,556.861	1,616.043	1,628.471	1,587.300
PRESS RELEASE CONTRIBUTION TO BFP 04/05/2022 - 16/05/2022 (SA c/l)	1,264.410	1,241.410	1,497.630	1,514.030	1,446.128
UNIT OVER/(UNDER) RECOVERY - 16/05/2022 (SA c/l)	(319.745)	(315.451)	(118.413)	(114.441)	(141.172)
AVERAGE BASIC FUEL PRICE 28/04/2022 - 16/05/2022	1,475.732	1,448.342	1,627.666	1,643.482	1,629.607
AVERAGE UNIT OVER/(UNDER) RECOVERY 28/04/2022 - 16/05/2022	(206.922)	(202.532)	(159.266)	(156.836)	(209.018)

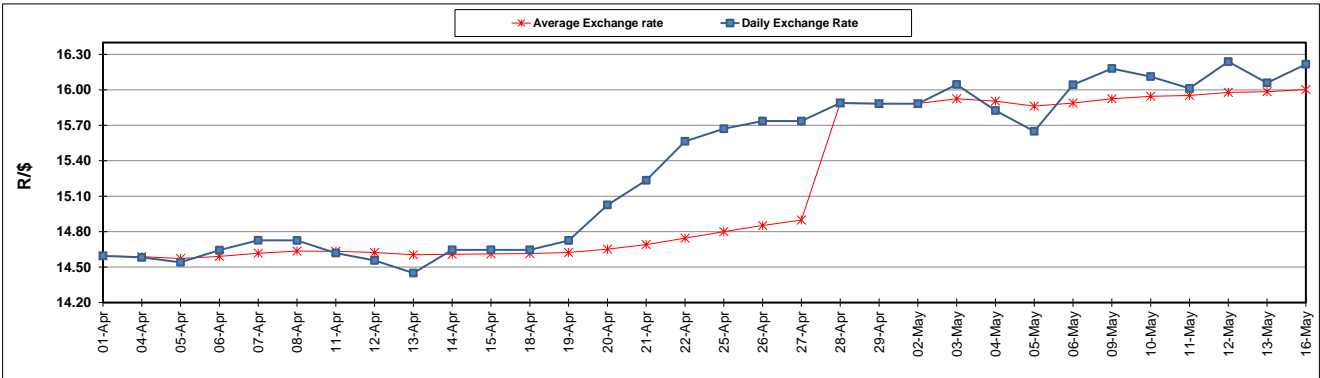
ANALYSIS MOVEMENT OF AVERAGE OVER/(UNDER) RECOVERY

- MOVEMENT IN INTERNATIONAL PRODUCT PRICES
- MOVEMENT IN EXCHANGE RATE
- AVERAGE UNIT OVER/(UNDER) RECOVERY 28/04/2022 - 16/05/2022

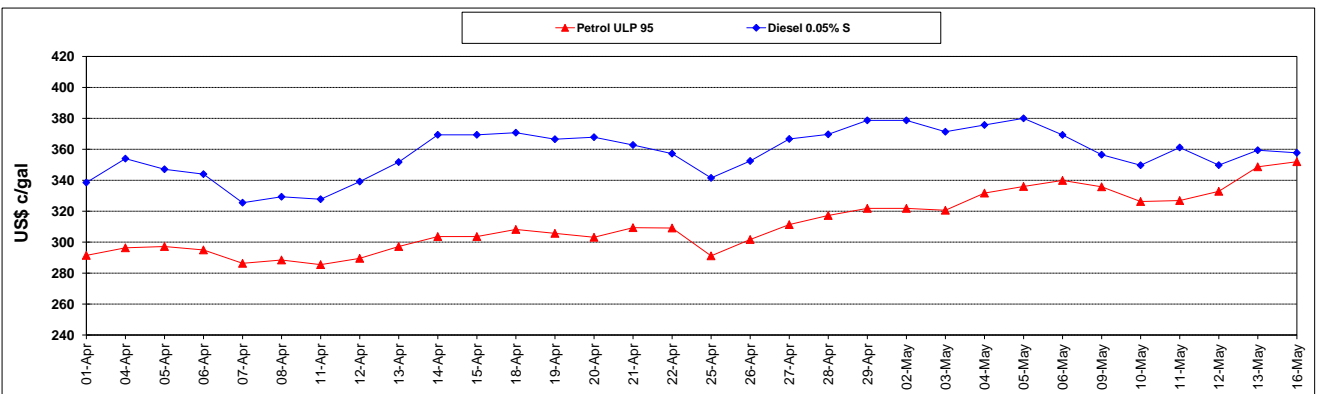
	PETROL 95	PETROL 93	DIESEL 0.05%	DIESEL 0.005%	ILL. PAR.
MOVEMENT IN INTERNATIONAL PRODUCT PRICES	(105.085)	(102.585)	(46.946)	(43.424)	(96.562)
MOVEMENT IN EXCHANGE RATE	(101.837)	(99.947)	(112.321)	(113.413)	(112.455)
AVERAGE UNIT OVER/(UNDER) RECOVERY 28/04/2022 - 16/05/2022	(206.922)	(202.532)	(159.266)	(156.836)	(209.018)

R/\$ EXCHANGE RATE - (R/\$16.2160 - 16/05/2022)

EXCHANGE RATE USED IN BASIC FUEL PRICE



INTERNATIONAL PRODUCT PRICES OF BASKET USED IN BASIC FUEL PRICE



BASIC FUEL PRICE IN SA CENTS PER LITRE

