

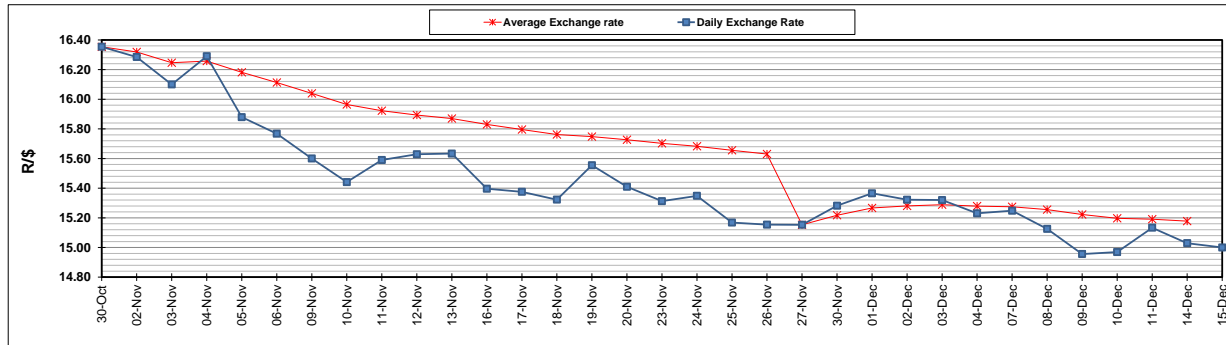
	PETROL 95 ULP	PETROL 93 ULP & LRP	DIESEL 0.05%	DIESEL 0.005%	ILL. PAR.
GAUTENG PUMP PRICE (SA c/l) AS FROM 02/12/2020	1,446.000	1,426.000	-	-	-
WHOLESALE PRICE (SA c/l) AS FROM 02/12/2020	-	-	1,245.420	1,247.820	684.688
SINGLE NATIONAL MAXIMUM RETAIL PRICE	-	-	-	-	856.000
BASIC FUEL PRICE - 15/12/2020 (SA c/l)	529.570	522.434	547.596	548.322	533.669
PRESS RELEASE CONTRIBUTION TO BFP 02/12/2020 - 15/12/2020 (SA c/l)	479.170	469.170	486.630	489.030	472.128
UNIT OVER/(UNDER) RECOVERY - 15/12/2020 (SA c/l)	(50.400)	(53.264)	(60.966)	(59.292)	(61.541)
AVERAGE BASIC FUEL PRICE 27/11/2020 - 15/12/2020	516.831	510.393	536.302	537.616	519.894
AVERAGE UNIT OVER/(UNDER) RECOVERY 27/11/2020 - 15/12/2020	(31.361)	(34.923)	(52.441)	(51.355)	(52.613)

### ANALYSIS MOVEMENT OF AVERAGE OVER/(UNDER) RECOVERY

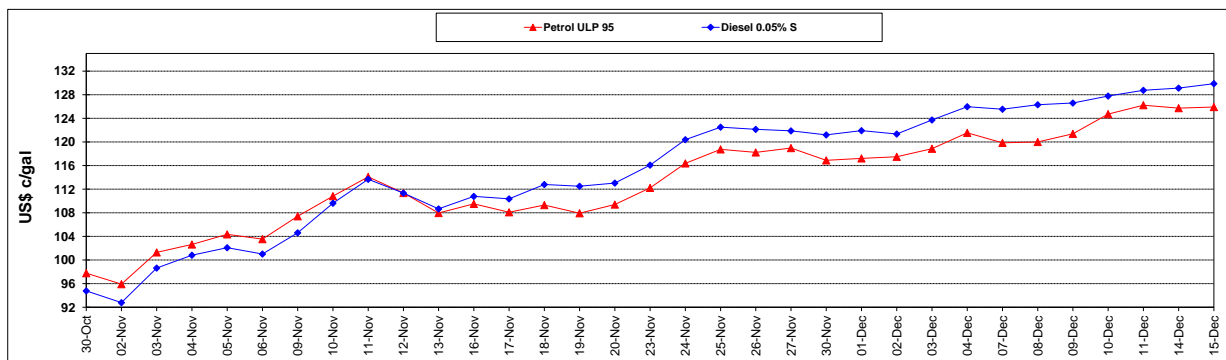
	PETROL 95	PETROL 93	DIESEL 0.05%	DIESEL 0.005%	ILL. PAR.
- MOVEMENT IN INTERNATIONAL PRODUCT PRICES	(47.261)	(50.625)	(68.940)	(67.894)	(68.606)
- MOVEMENT IN EXCHANGE RATE	15.900	15.702	16.499	16.539	15.994
AVERAGE UNIT OVER/(UNDER) RECOVERY 27/11/2020 - 15/12/2020	(31.361)	(34.923)	(52.441)	(51.355)	(52.613)

### R/\$ EXCHANGE RATE - (R/\$15.000 - 15/12/2020)

#### EXCHANGE RATE USED IN BASIC FUEL PRICE



#### INTERNATIONAL PRODUCT PRICES OF BASKET USED IN BASIC FUEL PRICE



#### BASIC FUEL PRICE IN SA CENTS PER LITRE

