

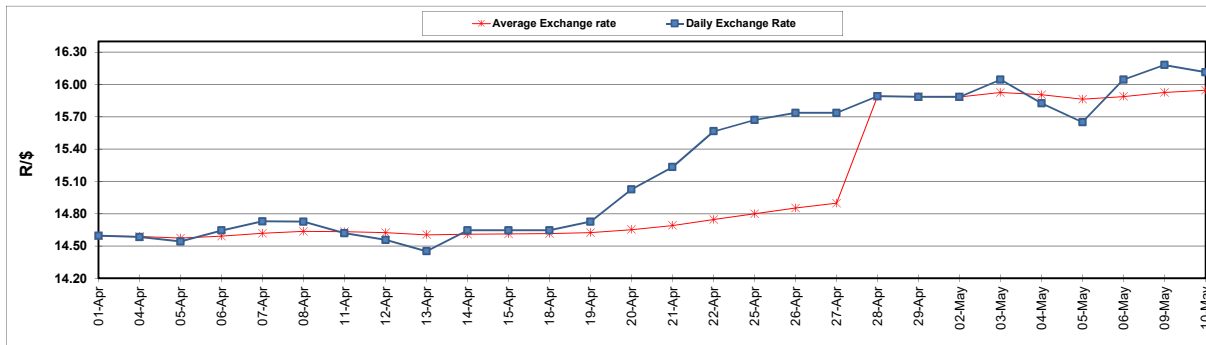
	PETROL 95 ULP	PETROL 93 ULP & LRP	DIESEL 0.05%	DIESEL 0.005%	ILL. PAR.
GAUTENG PUMP PRICE (SA c/l) AS FROM 04/05/2022	2,184.000	2,151.000	-	-	-
WHOLESALE PRICE (SA c/l) AS FROM 04/05/2022	-	-	2,199.440	2,215.840	1,664.288
SINGLE NATIONAL MAXIMUM RETAIL PRICE	-	-	-	-	2,194.000
BASIC FUEL PRICE - 10/05/2022 (SA c/l)	1,464.362	1,439.356	1,571.340	1,587.639	1,612.260
PRESS RELEASE CONTRIBUTION TO BFP 04/05/2022 - 10/05/2022 (SA c/l)	1,264.410	1,241.410	1,497.630	1,514.030	1,446.128
UNIT OVER/(UNDER) RECOVERY - 10/05/2022 (SA c/l)	(199.952)	(197.946)	(73.710)	(73.609)	(166.132)
AVERAGE BASIC FUEL PRICE 28/04/2022 - 10/05/2022	1,453.707	1,425.740	1,637.931	1,654.639	1,646.802
AVERAGE UNIT OVER/(UNDER) RECOVERY 28/04/2022 - 10/05/2022	(182.942)	(177.974)	(182.523)	(180.164)	(237.563)

ANALYSIS MOVEMENT OF AVERAGE OVER/(UNDER) RECOVERY

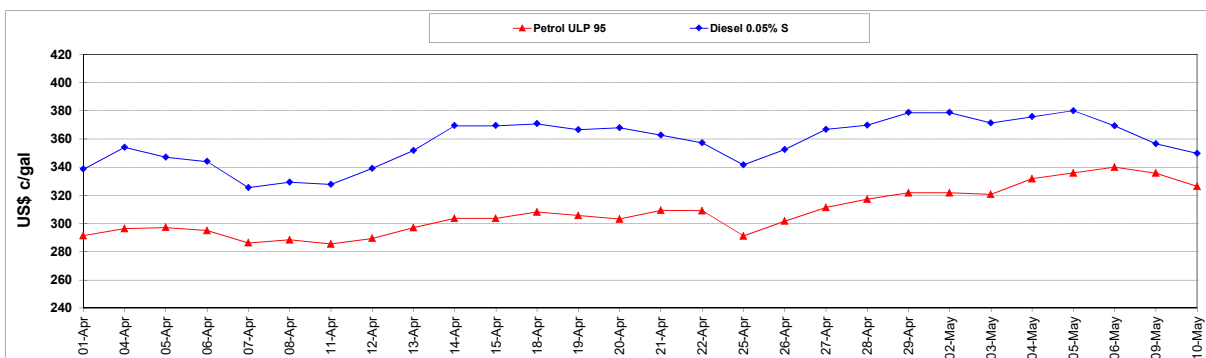
	PETROL 95	PETROL 93	DIESEL 0.05%	DIESEL 0.005%	ILL. PAR.
- MOVEMENT IN INTERNATIONAL PRODUCT PRICES	(87.488)	(84.357)	(74.973)	(71.518)	(129.431)
- MOVEMENT IN EXCHANGE RATE	(95.453)	(93.617)	(107.550)	(108.647)	(108.132)
AVERAGE UNIT OVER/(UNDER) RECOVERY 28/04/2022 - 10/05/2022	(182.942)	(177.974)	(182.523)	(180.164)	(237.563)

R/\$ EXCHANGE RATE - (R/\$16.1120 - 10/05/2022)

EXCHANGE RATE USED IN BASIC FUEL PRICE



INTERNATIONAL PRODUCT PRICES OF BASKET USED IN BASIC FUEL PRICE



BASIC FUEL PRICE IN SA CENTS PER LITRE

