

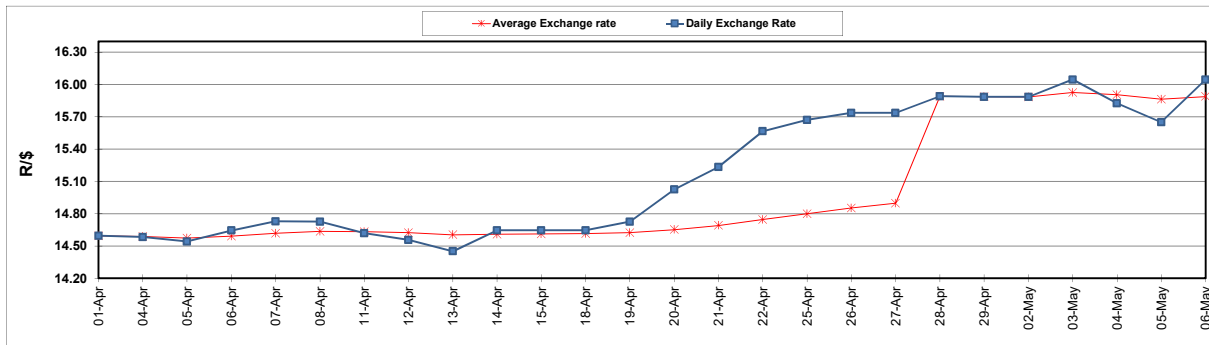
	PETROL 95 ULP	PETROL 93 ULP & LRP	DIESEL 0.05%	DIESEL 0.005%	ILL. PAR.
GAUTENG PUMP PRICE (SA c/l) AS FROM 04/05/2022	2,184.000	2,151.000	-	-	-
WHOLESALE PRICE (SA c/l) AS FROM 04/05/2022	-	-	2,199.440	2,215.840	1,664.288
SINGLE NATIONAL MAXIMUM RETAIL PRICE	-	-	-	-	2,194.000
BASIC FUEL PRICE - 06/05/2022 (SA c/l)	1,515.841	1,486.751	1,648.117	1,664.652	1,667.296
PRESS RELEASE CONTRIBUTION TO BFP 04/05/2022 - 06/05/2022 (SA c/l)	1,264.410	1,241.410	1,497.630	1,514.030	1,446.128
UNIT OVER/(UNDER) RECOVERY - 06/05/2022 (SA c/l)	(251.431)	(245.341)	(150.487)	(150.622)	(221.168)
AVERAGE BASIC FUEL PRICE 28/04/2022 - 06/05/2022	1,443.975	1,415.568	1,651.861	1,668.453	1,651.474
AVERAGE UNIT OVER/(UNDER) RECOVERY 28/04/2022 - 06/05/2022	(171.393)	(165.986)	(208.517)	(205.280)	(252.775)

ANALYSIS MOVEMENT OF AVERAGE OVER/(UNDER) RECOVERY

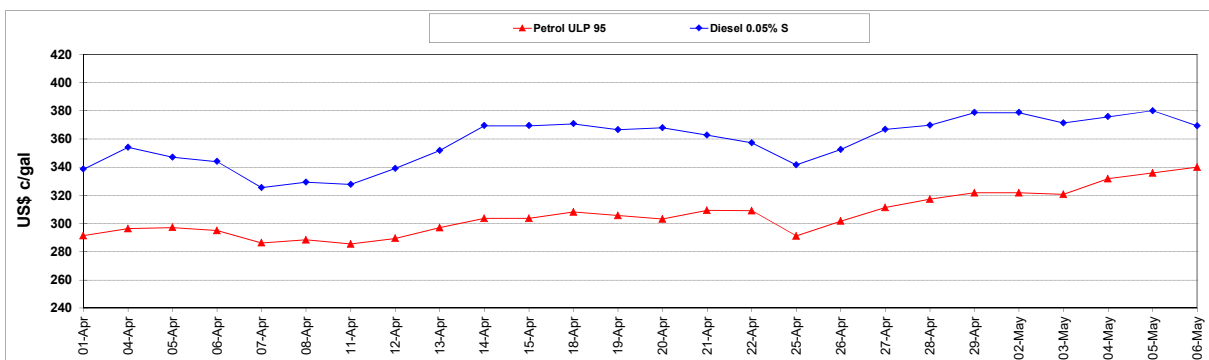
	PETROL 95	PETROL 93	DIESEL 0.05%	DIESEL 0.005%	ILL. PAR.
- MOVEMENT IN INTERNATIONAL PRODUCT PRICES	(81.445)	(77.808)	(105.619)	(101.348)	(149.901)
- MOVEMENT IN EXCHANGE RATE	(89.949)	(88.179)	(102.898)	(103.932)	(102.874)
AVERAGE UNIT OVER/(UNDER) RECOVERY 28/04/2022 - 06/05/2022	(171.393)	(165.986)	(208.517)	(205.280)	(252.775)

R/\$ EXCHANGE RATE - (R/\$16.0430 - 06/05/2022)

EXCHANGE RATE USED IN BASIC FUEL PRICE



INTERNATIONAL PRODUCT PRICES OF BASKET USED IN BASIC FUEL PRICE



BASIC FUEL PRICE IN SA CENTS PER LITRE

