

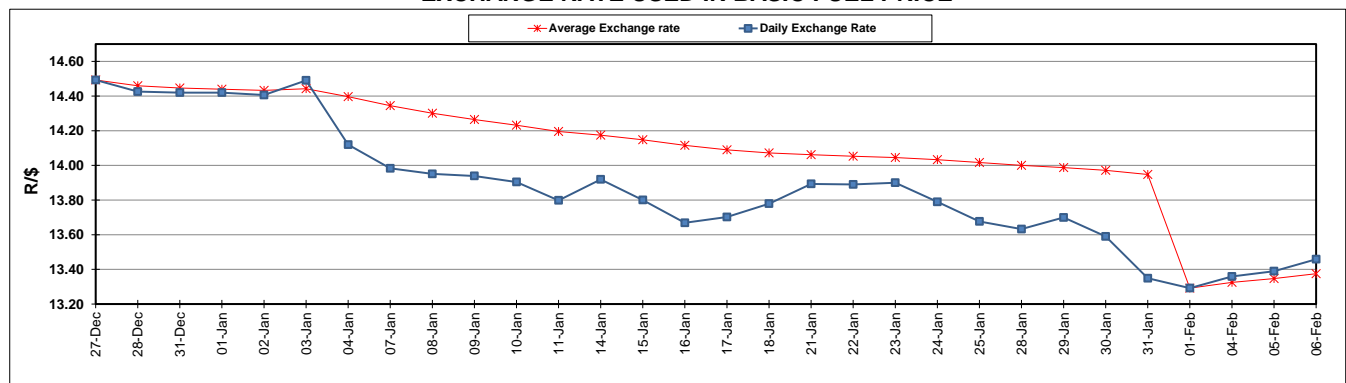
	PETROL 95 ULP	PETROL 93 ULP & LRP	DIESEL 0.05%	DIESEL 0.005%	ILL. PAR.
GAUTENG PUMP PRICE (SA c/l) AS FROM 06/02/2019	1 408.000	1 386.000	-	-	-
WHOLESALE PRICE (SA c/l) AS FROM 06/02/2019	-	-	1 314.420	1 318.820	823.678
SINGLE NATIONAL MAXIMUM RETAIL PRICE	-	-	-	-	1 060.000
BASIC FUEL PRICE - 06/02/2019 (SA c/l)	580.137	565.944	687.029	692.808	687.809
PRESS RELEASE CONTRIBUTION TO BFP 06/02/2019 - 06/02/2019 (SA c/l)	543.470	531.470	636.630	641.030	646.128
UNIT OVER/(UNDER) RECOVERY - 06/02/2019 (SA c/l)	(36.667)	(34.474)	(50.399)	(51.778)	(41.681)
AVERAGE BASIC FUEL PRICE 01/02/2019 - 06/02/2019	570.364	556.662	679.258	684.678	680.228
AVERAGE UNIT OVER/(UNDER) RECOVERY 01/02/2019 - 06/02/2019	(32.144)	(30.442)	(43.378)	(45.148)	(30.350)

ANALYSIS MOVEMENT OF AVERAGE OVER/(UNDER) RECOVERY

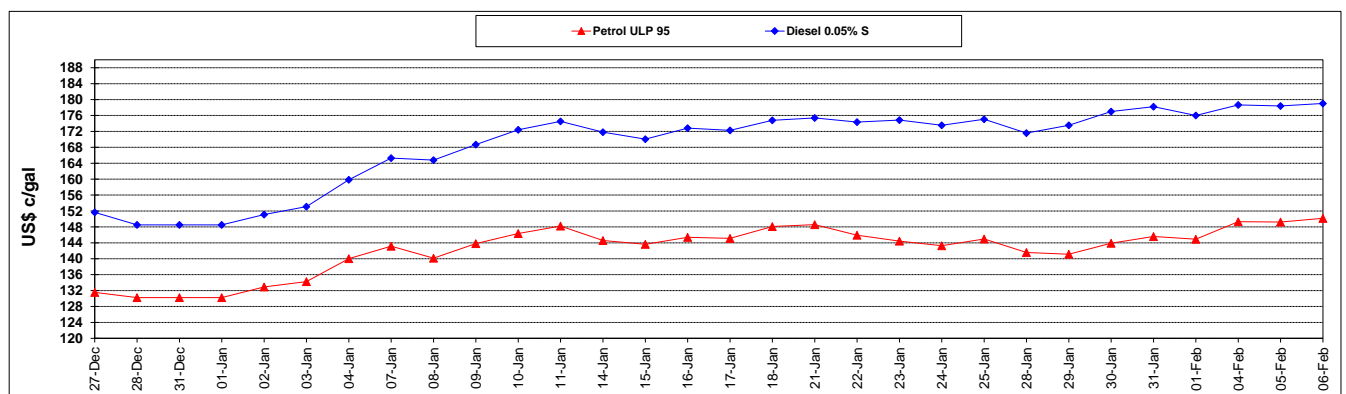
	PETROL 95	PETROL 93	DIESEL 0.05%	DIESEL 0.005%	ILL. PAR.
- MOVEMENT IN INTERNATIONAL PRODUCT PRICES	(57.595)	(55.281)	(73.688)	(75.699)	(60.703)
- MOVEMENT IN EXCHANGE RATE	25.451	24.839	30.310	30.551	30.353
AVERAGE UNIT OVER/(UNDER) RECOVERY 01/02/2019 - 06/02/2019	(32.144)	(30.442)	(43.378)	(45.148)	(30.350)

R/\$ EXCHANGE RATE - (R/\$13.4585 - 06/02/2019)

EXCHANGE RATE USED IN BASIC FUEL PRICE



INTERNATIONAL PRODUCT PRICES OF BASKET USED IN BASIC FUEL PRICE



BASIC FUEL PRICE IN SA CENTS PER LITRE

