

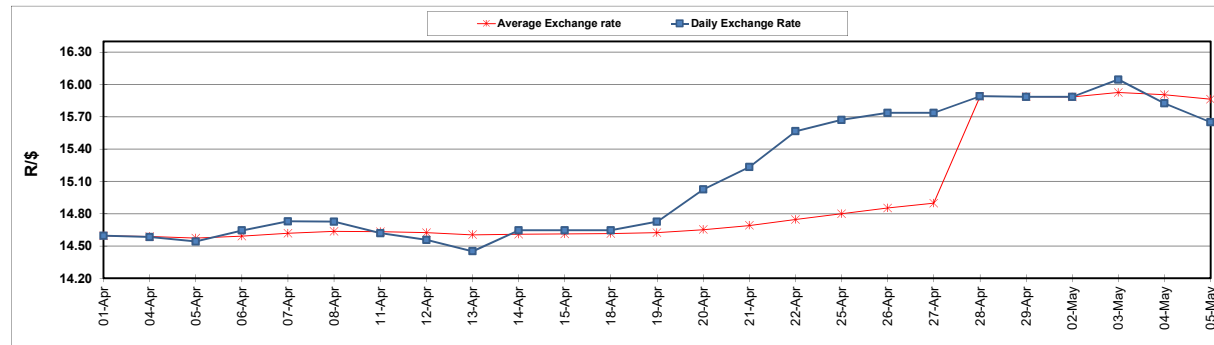
	PETROL 95 ULP	PETROL 93 ULP & LRP	DIESEL 0.05%	DIESEL 0.005%	ILL. PAR.
GAUTENG PUMP PRICE (SA c/l) AS FROM 04/05/2022	2,184.000	2,151.000	-	-	-
WHOLESALE PRICE (SA c/l) AS FROM 04/05/2022	-	-	2,199.440	2,215.840	1,664.288
SINGLE NATIONAL MAXIMUM RETAIL PRICE	-	-	-	-	2,194.000
BASIC FUEL PRICE - 05/05/2022 (SA c/l)	1,462.745	1,434.433	1,652.392	1,667.999	1,653.218
PRESS RELEASE CONTRIBUTION TO BFP 04/05/2022 - 05/05/2022 (SA c/l)	1,264.410	1,241.410	1,497.630	1,514.030	1,446.128
UNIT OVER/(UNDER) RECOVERY - 05/05/2022 (SA c/l)	(198.335)	(193.023)	(154.762)	(153.969)	(207.090)
AVERAGE BASIC FUEL PRICE 28/04/2022 - 05/05/2022	1,431.997	1,403.704	1,652.485	1,669.086	1,648.837
AVERAGE UNIT OVER/(UNDER) RECOVERY 28/04/2022 - 05/05/2022	(158.054)	(152.761)	(218.189)	(214.390)	(258.042)

### ANALYSIS MOVEMENT OF AVERAGE OVER/(UNDER) RECOVERY

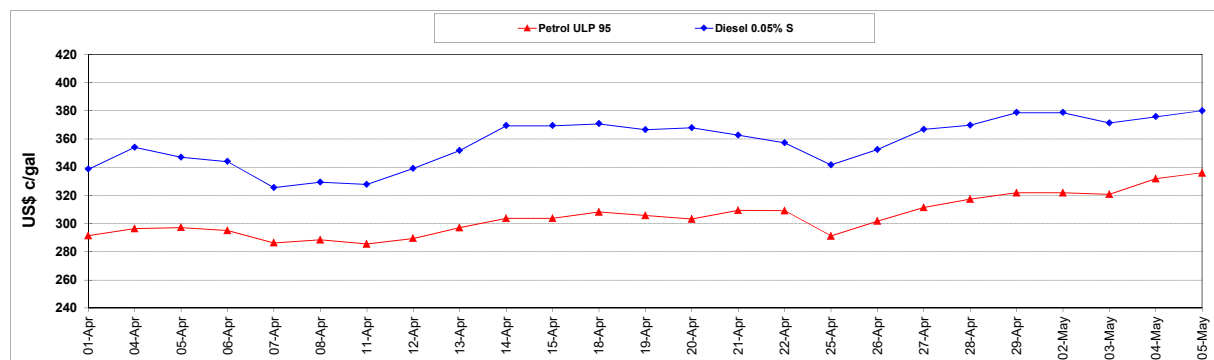
	PETROL 95	PETROL 93	DIESEL 0.05%	DIESEL 0.005%	ILL. PAR.
- MOVEMENT IN INTERNATIONAL PRODUCT PRICES	(71.036)	(67.462)	(117.771)	(112.963)	(157.847)
- MOVEMENT IN EXCHANGE RATE	(87.018)	(85.299)	(100.417)	(101.426)	(100.195)
AVERAGE UNIT OVER/(UNDER) RECOVERY 28/04/2022 - 05/05/2022	(158.054)	(152.761)	(218.189)	(214.390)	(258.042)

### R/\$ EXCHANGE RATE - (R/\$15.6493 - 05/05/2022)

#### EXCHANGE RATE USED IN BASIC FUEL PRICE



#### INTERNATIONAL PRODUCT PRICES OF BASKET USED IN BASIC FUEL PRICE



#### BASIC FUEL PRICE IN SA CENTS PER LITRE

