

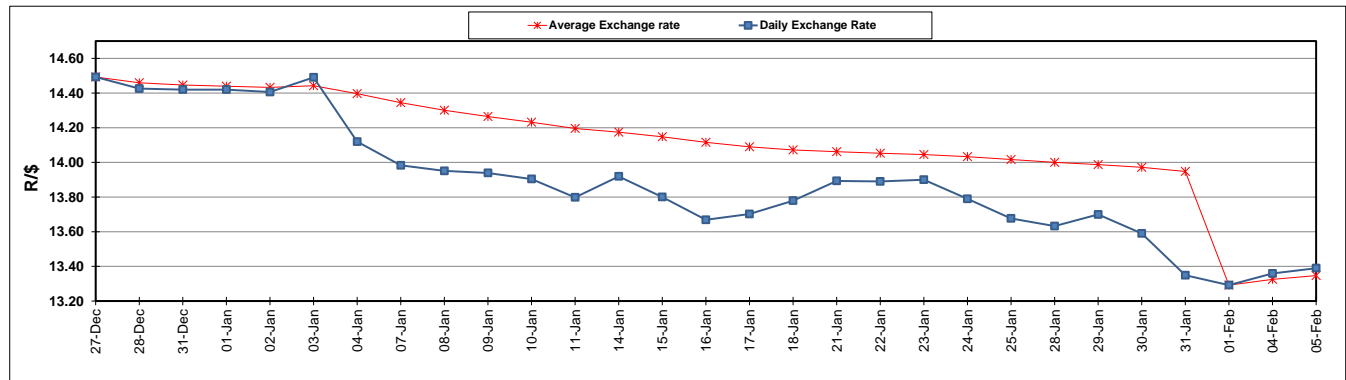
	PETROL 95 ULP	PETROL 93 ULP & LRP	DIESEL 0.05%	DIESEL 0.005%	ILL. PAR.
GAUTENG PUMP PRICE (SA c/l) AS FROM 06/02/2019	1 408.000	1 386.000	-	-	-
WHOLESALE PRICE (SA c/l) AS FROM 06/02/2019	-	-	1 314.420	1 318.820	823.678
SINGLE NATIONAL MAXIMUM RETAIL PRICE	-	-	-	-	1 060.000
BASIC FUEL PRICE - 05/02/2019 (SA c/l)	573.905	559.797	681.346	686.905	682.311
PRESS RELEASE CONTRIBUTION TO BFP 01/02/2019 - 05/02/2019 (SA c/l)	536.470	524.470	635.630	639.030	651.128
UNIT OVER/(UNDER) RECOVERY - 05/02/2019 (SA c/l)	(37.435)	(35.327)	(45.716)	(47.875)	(31.183)
AVERAGE BASIC FUEL PRICE 01/02/2019 - 05/02/2019	567.107	553.568	676.668	681.967	677.700
AVERAGE UNIT OVER/(UNDER) RECOVERY 01/02/2019 - 05/02/2019	(30.637)	(29.098)	(41.038)	(42.937)	(26.572)

ANALYSIS MOVEMENT OF AVERAGE OVER/(UNDER) RECOVERY

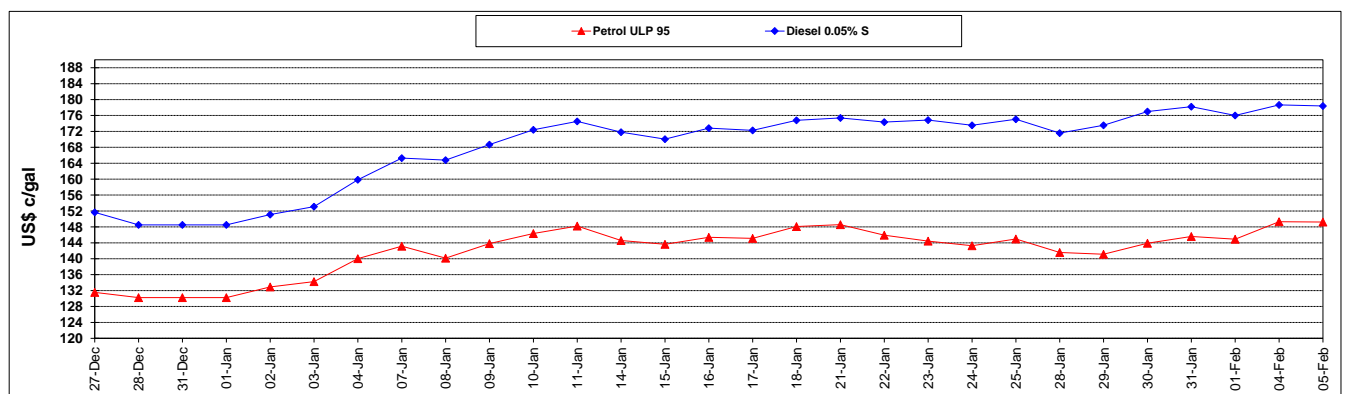
	PETROL 95	PETROL 93	DIESEL 0.05%	DIESEL 0.005%	ILL. PAR.
- MOVEMENT IN INTERNATIONAL PRODUCT PRICES	(57.181)	(55.008)	(72.710)	(74.857)	(58.292)
- MOVEMENT IN EXCHANGE RATE	26.544	25.910	31.672	31.920	31.720
AVERAGE UNIT OVER/(UNDER) RECOVERY 01/02/2019 - 05/02/2019	(30.637)	(29.098)	(41.038)	(42.937)	(26.572)

R/\$ EXCHANGE RATE - (R/\$13.3895 - 05/02/2019)

EXCHANGE RATE USED IN BASIC FUEL PRICE



INTERNATIONAL PRODUCT PRICES OF BASKET USED IN BASIC FUEL PRICE



BASIC FUEL PRICE IN SA CENTS PER LITRE

