

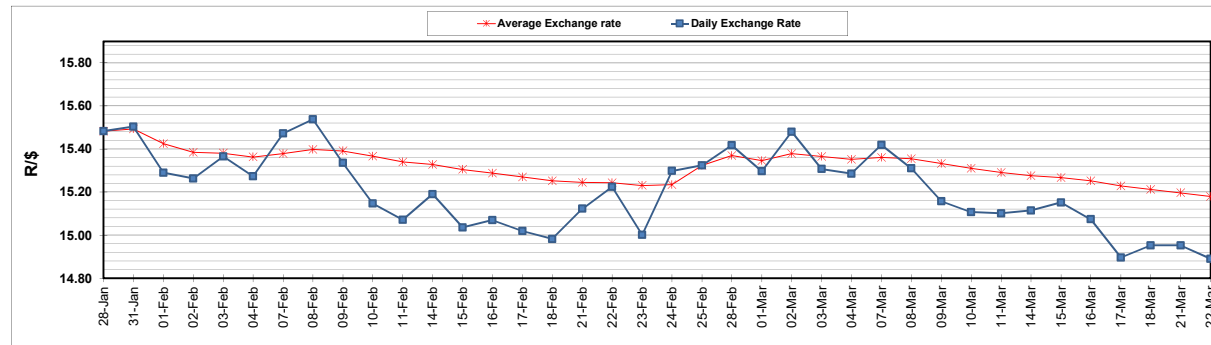
	PETROL 95 ULP	PETROL 93 ULP & LRP	DIESEL 0.05%	DIESEL 0.005%	ILL. PAR.
GAUTENG PUMP PRICE (SA c/l) AS FROM 02/03/2022	2,160.000	2,135.000	-	-	-
WHOLESALE PRICE (SA c/l) AS FROM 02/03/2022	-	-	1,948.880	1,955.280	1,318.688
SINGLE NATIONAL MAXIMUM RETAIL PRICE	-	-	-	-	1,690.000
BASIC FUEL PRICE - 22/03/2022 (SA c/l)	1,276.586	1,251.842	1,454.713	1,478.240	1,426.641
PRESS RELEASE CONTRIBUTION TO BFP 02/03/2022 - 22/03/2022 (SA c/l)	1,100.270	1,085.270	1,107.630	1,114.030	1,097.128
UNIT OVER/(UNDER) RECOVERY - 22/03/2022 (SA c/l)	(176.316)	(166.572)	(347.083)	(364.210)	(329.513)
AVERAGE BASIC FUEL PRICE 25/02/2022 - 22/03/2022	1,271.604	1,248.803	1,369.313	1,389.253	1,323.176
AVERAGE UNIT OVER/(UNDER) RECOVERY 25/02/2022 - 22/03/2022	(193.107)	(185.306)	(283.183)	(297.389)	(246.215)

### ANALYSIS MOVEMENT OF AVERAGE OVER/(UNDER) RECOVERY

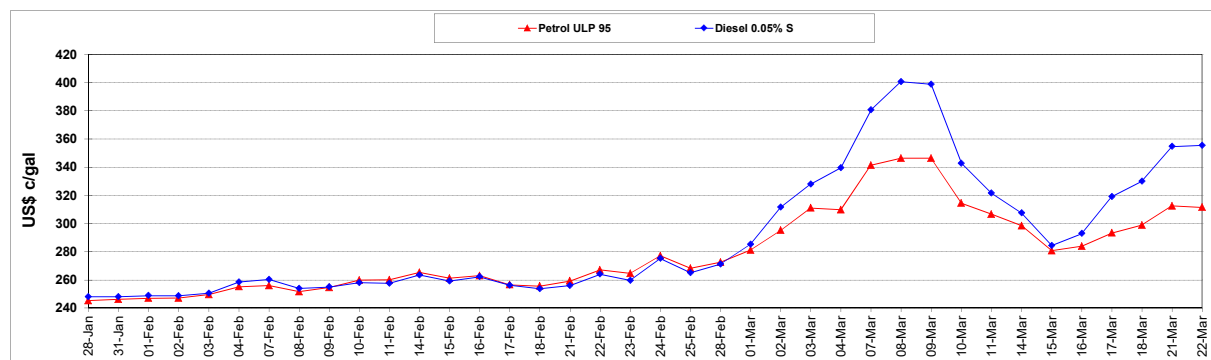
	PETROL 95	PETROL 93	DIESEL 0.05%	DIESEL 0.005%	ILL. PAR.
- MOVEMENT IN INTERNATIONAL PRODUCT PRICES	(197.672)	(189.790)	(288.099)	(302.378)	(250.966)
- MOVEMENT IN EXCHANGE RATE	4.565	4.484	4.916	4.988	4.751
AVERAGE UNIT OVER/(UNDER) RECOVERY 25/02/2022 - 22/03/2022	(193.107)	(185.306)	(283.183)	(297.389)	(246.215)

**R/\$ EXCHANGE RATE - (R/\$14.8905 - 22/03/2022)**

### EXCHANGE RATE USED IN BASIC FUEL PRICE



### INTERNATIONAL PRODUCT PRICES OF BASKET USED IN BASIC FUEL PRICE



### BASIC FUEL PRICE IN SA CENTS PER LITRE

