

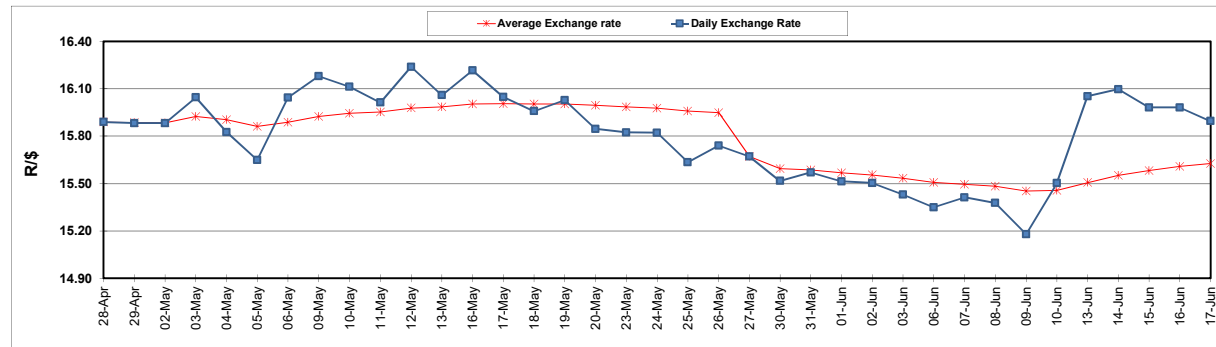
	PETROL 95 ULP	PETROL 93 ULP & LRP	DIESEL 0.05%	DIESEL 0.005%	ILL. PAR.
GAUTENG PUMP PRICE (SA c/l) AS FROM 01/06/2022	2,417.000	2,394.000	-	-	-
WHOLESALE PRICE (SA c/l) AS FROM 01/06/2022	-	-	2,309.440	2,322.840	1,820.288
SINGLE NATIONAL MAXIMUM RETAIL PRICE	-	-	-	-	2,402.000
BASIC FUEL PRICE - 17/06/2022 (SA c/l)	1,643.114	1,599.627	1,847.053	1,859.849	1,837.329
PRESS RELEASE CONTRIBUTION TO BFP 01/06/2022 - 17/06/2022 (SA c/l)	1,507.410	1,484.410	1,607.630	1,621.030	1,602.128
UNIT OVER/(UNDER) RECOVERY - 17/06/2022 (SA c/l)	(135.704)	(115.217)	(239.423)	(238.819)	(235.201)
AVERAGE BASIC FUEL PRICE 27/05/2022 - 17/06/2022	1,656.664	1,615.982	1,737.267	1,751.734	1,743.615
AVERAGE UNIT OVER/(UNDER) RECOVERY 27/05/2022 - 17/06/2022	(194.816)	(177.134)	(150.262)	(150.766)	(170.737)

ANALYSIS MOVEMENT OF AVERAGE OVER/(UNDER) RECOVERY

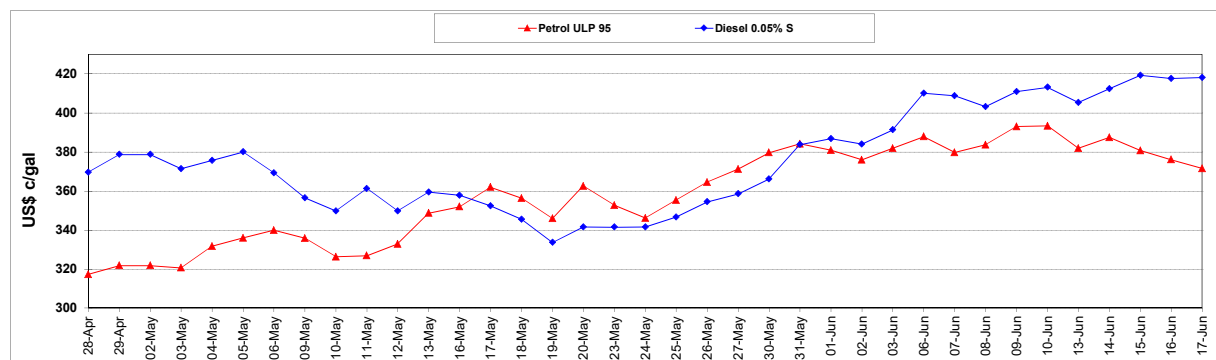
	PETROL 95	PETROL 93	DIESEL 0.05%	DIESEL 0.005%	ILL. PAR.
- MOVEMENT IN INTERNATIONAL PRODUCT PRICES	(228.995)	(210.474)	(186.104)	(186.907)	(206.710)
- MOVEMENT IN EXCHANGE RATE	34.179	33.340	35.842	36.141	35.973
AVERAGE UNIT OVER/(UNDER) RECOVERY 27/05/2022 - 17/06/2022	(194.816)	(177.134)	(150.262)	(150.766)	(170.737)

R/\$ EXCHANGE RATE - (R/\$15.8950 - 17/06/2022)

EXCHANGE RATE USED IN BASIC FUEL PRICE



INTERNATIONAL PRODUCT PRICES OF BASKET USED IN BASIC FUEL PRICE



BASIC FUEL PRICE IN SA CENTS PER LITRE

