

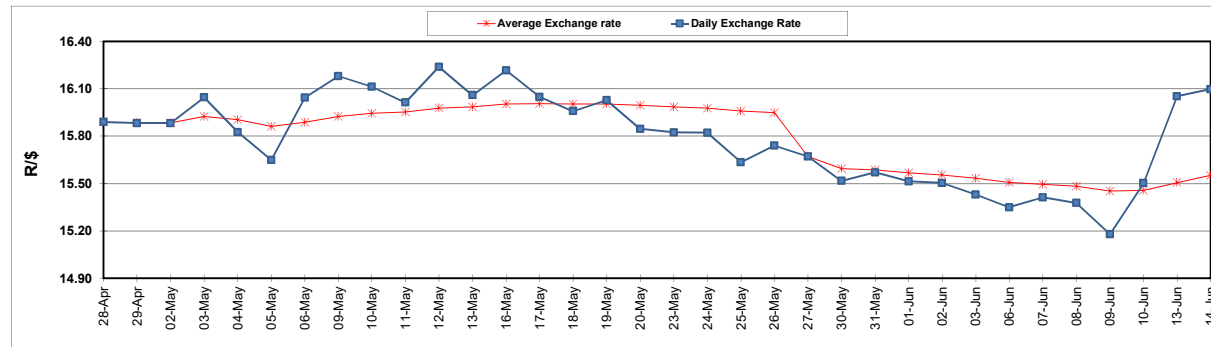
	PETROL 95 ULP	PETROL 93 ULP & LRP	DIESEL 0.05%	DIESEL 0.005%	ILL. PAR.
GAUTENG PUMP PRICE (SA c/l) AS FROM 01/06/2022	2,417.000	2,394.000	-	-	-
WHOLESALE PRICE (SA c/l) AS FROM 01/06/2022	-	-	2,309.440	2,322.840	1,820.288
SINGLE NATIONAL MAXIMUM RETAIL PRICE	-	-	-	-	2,402.000
BASIC FUEL PRICE - 14/06/2022 (SA c/l)	1,731.582	1,687.528	1,846.034	1,863.083	1,854.826
PRESS RELEASE CONTRIBUTION TO BFP 01/06/2022 - 14/06/2022 (SA c/l)	1,507.410	1,484.410	1,607.630	1,621.030	1,602.128
UNIT OVER/(UNDER) RECOVERY - 14/06/2022 (SA c/l)	(224.172)	(203.118)	(238.404)	(242.053)	(252.698)
AVERAGE BASIC FUEL PRICE 27/05/2022 - 14/06/2022	1,653.952	1,613.954	1,710.147	1,724.087	1,719.513
AVERAGE UNIT OVER/(UNDER) RECOVERY 27/05/2022 - 14/06/2022	(202.619)	(185.621)	(127.902)	(127.749)	(153.385)

ANALYSIS MOVEMENT OF AVERAGE OVER/(UNDER) RECOVERY

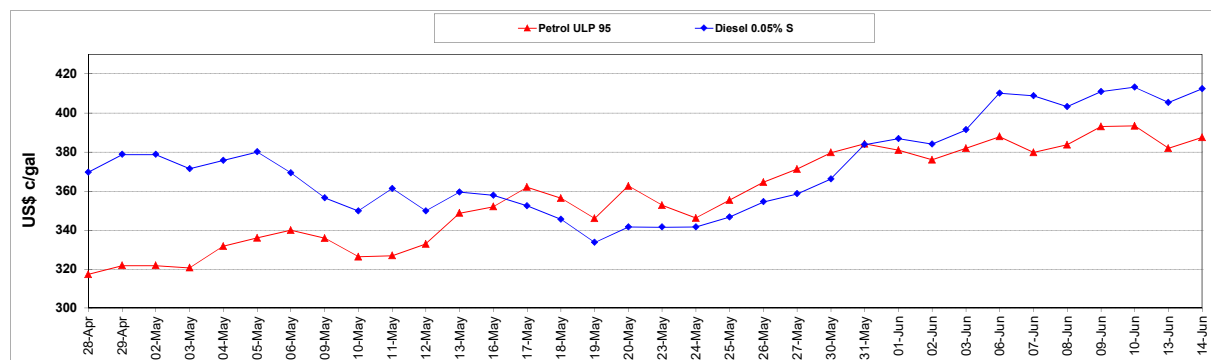
	PETROL 95	PETROL 93	DIESEL 0.05%	DIESEL 0.005%	ILL. PAR.
- MOVEMENT IN INTERNATIONAL PRODUCT PRICES	(244.904)	(226.883)	(171.624)	(171.827)	(197.347)
- MOVEMENT IN EXCHANGE RATE	42.285	41.263	43.722	44.078	43.961
AVERAGE UNIT OVER/(UNDER) RECOVERY 27/05/2022 - 14/06/2022	(202.619)	(185.621)	(127.902)	(127.749)	(153.385)

R/\$ EXCHANGE RATE - (R/\$16.0963 - 14/06/2022)

EXCHANGE RATE USED IN BASIC FUEL PRICE



INTERNATIONAL PRODUCT PRICES OF BASKET USED IN BASIC FUEL PRICE



BASIC FUEL PRICE IN SA CENTS PER LITRE

