

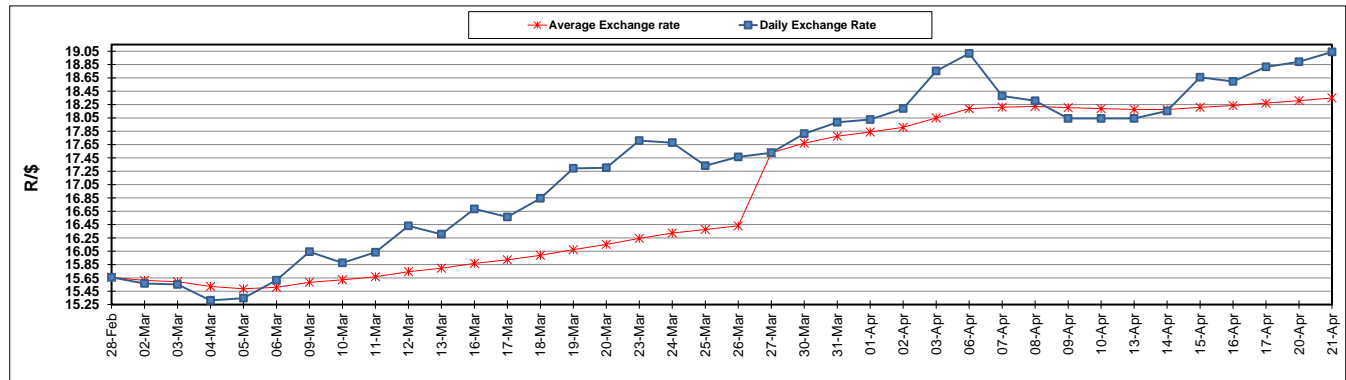
	PETROL 95 ULP	PETROL 93 ULP & LRP	DIESEL 0.05%	DIESEL 0.005%	ILL. PAR.
GAUTENG PUMP PRICE (SA c/l) AS FROM 01/04/2020	1,396.000	1,376.000	-	-	-
WHOLESALE PRICE (SA c/l) AS FROM 01/04/2020	-	-	1,269.560	1,273.960	672.828
SINGLE NATIONAL MAXIMUM RETAIL PRICE	-	-	-	-	840.000
BASIC FUEL PRICE - 21/04/2020 (SA c/l)	257.713	245.846	292.623	303.837	195.996
PRESS RELEASE CONTRIBUTION TO BFP 01/04/2020 - 21/04/2020 (SA c/l)	448.770	438.770	518.630	523.030	468.128
UNIT OVER/(UNDER) RECOVERY - 21/04/2020 (SA c/l)	191.057	192.924	226.007	219.193	272.132
AVERAGE BASIC FUEL PRICE 27/03/2020 - 21/04/2020	310.651	304.449	418.759	428.990	311.964
AVERAGE UNIT OVER/(UNDER) RECOVERY 27/03/2020 - 21/04/2020	174.652	168.855	127.371	121.707	189.164

ANALYSIS MOVEMENT OF AVERAGE OVER/(UNDER) RECOVERY

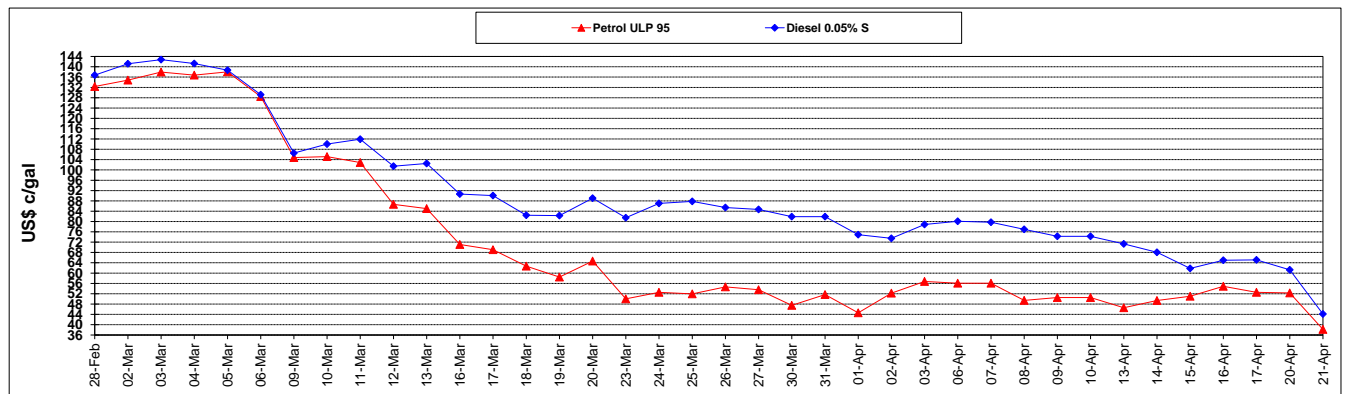
	PETROL 95	PETROL 93	DIESEL 0.05%	DIESEL 0.005%	ILL. PAR.
- MOVEMENT IN INTERNATIONAL PRODUCT PRICES	207.131	200.685	171.153	166.558	221.780
- MOVEMENT IN EXCHANGE RATE	(32.479)	(31.831)	(43.782)	(44.851)	(32.616)
AVERAGE UNIT OVER/(UNDER) RECOVERY 27/03/2020 - 21/04/2020	174.652	168.855	127.371	121.707	189.164

R/\$ EXCHANGE RATE - (R/\$19.0400 - 21/04/2020)

EXCHANGE RATE USED IN BASIC FUEL PRICE



INTERNATIONAL PRODUCT PRICES OF BASKET USED IN BASIC FUEL PRICE



BASIC FUEL PRICE IN SA CENTS PER LITRE

