

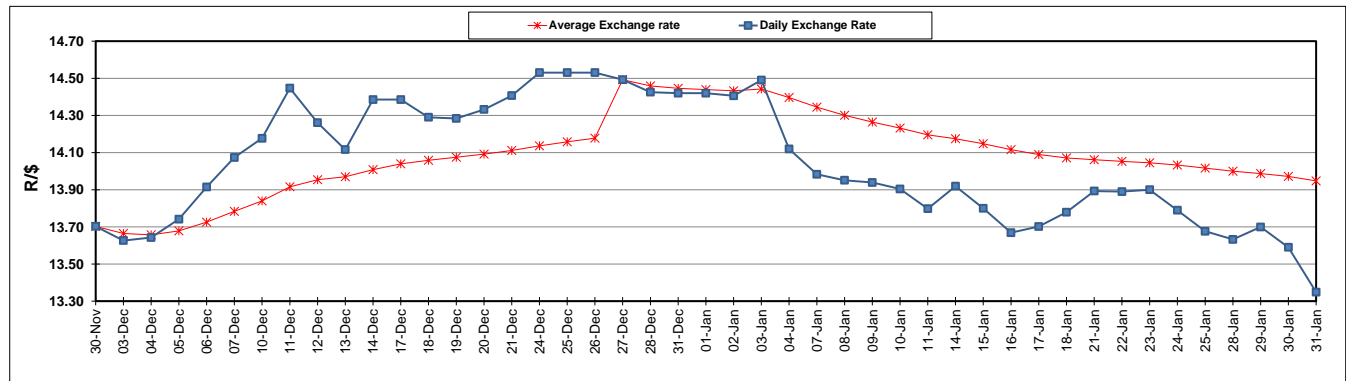
	PETROL 95 ULP	PETROL 93 ULP & LRP	DIESEL 0.05%	DIESEL 0.005%	ILL. PAR.
GAUTENG PUMP PRICE (SA c/l) AS FROM 02/01/2019	1 401.000	1 379.000	-	-	-
WHOLESALE PRICE (SA c/l) AS FROM 02/01/2019	-	-	1 313.420	1 316.820	828.678
SINGLE NATIONAL MAXIMUM RETAIL PRICE	-	-	-	-	1 067.000
BASIC FUEL PRICE - 31/01/2019 (SA c/l)	551.741	540.549	670.423	675.587	670.783
PRESS RELEASE CONTRIBUTION TO BFP 02/01/2018 - 31/01/2019 (SA c/l)	536.470	524.470	635.630	639.030	651.128
UNIT OVER/(UNDER) RECOVERY - 31/01/2019 (SA c/l)	(15.271)	(16.079)	(34.793)	(36.557)	(19.655)
AVERAGE BASIC FUEL PRICE 27/12/2018 - 31/01/2019	559.820	548.503	657.296	661.750	664.755
AVERAGE UNIT OVER/(UNDER) RECOVERY 27/12/2018 - 31/01/2019	(7.800)	(8.636)	(1.359)	(2.105)	5.296

ANALYSIS MOVEMENT OF AVERAGE OVER/(UNDER) RECOVERY

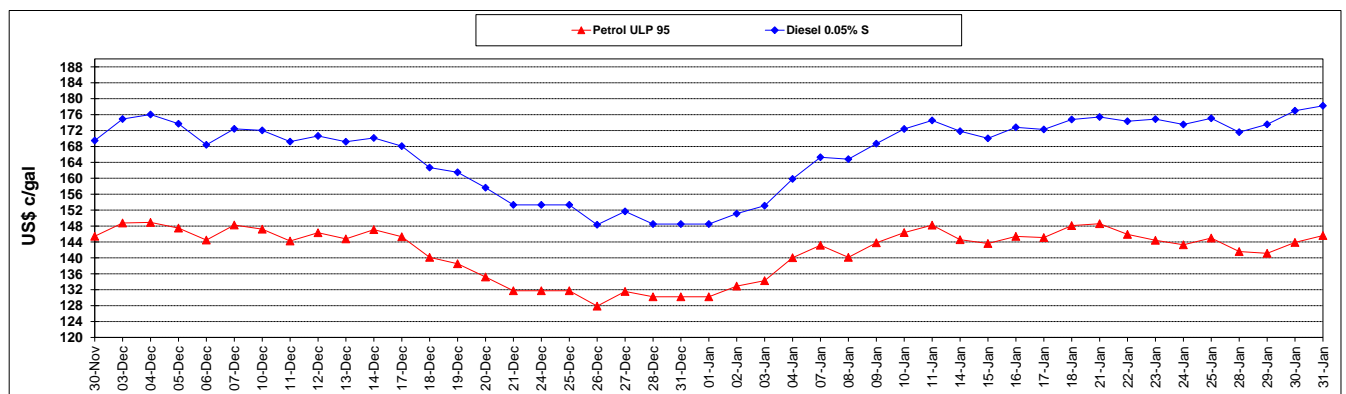
	PETROL 95	PETROL 93	DIESEL 0.05%	DIESEL 0.005%	ILL. PAR.
- MOVEMENT IN INTERNATIONAL PRODUCT PRICES	(17.039)	(17.689)	(12.206)	(13.027)	(5.676)
- MOVEMENT IN EXCHANGE RATE	9.240	9.053	10.848	10.922	10.972
AVERAGE UNIT OVER/(UNDER) RECOVERY 27/12/2018 - 31/01/2019	(7.800)	(8.636)	(1.359)	(2.105)	5.296

R/\$ EXCHANGE RATE - (R/\$13.3488 - 31/01/2019)

EXCHANGE RATE USED IN BASIC FUEL PRICE



INTERNATIONAL PRODUCT PRICES OF BASKET USED IN BASIC FUEL PRICE



BASIC FUEL PRICE IN SA CENTS PER LITRE

