

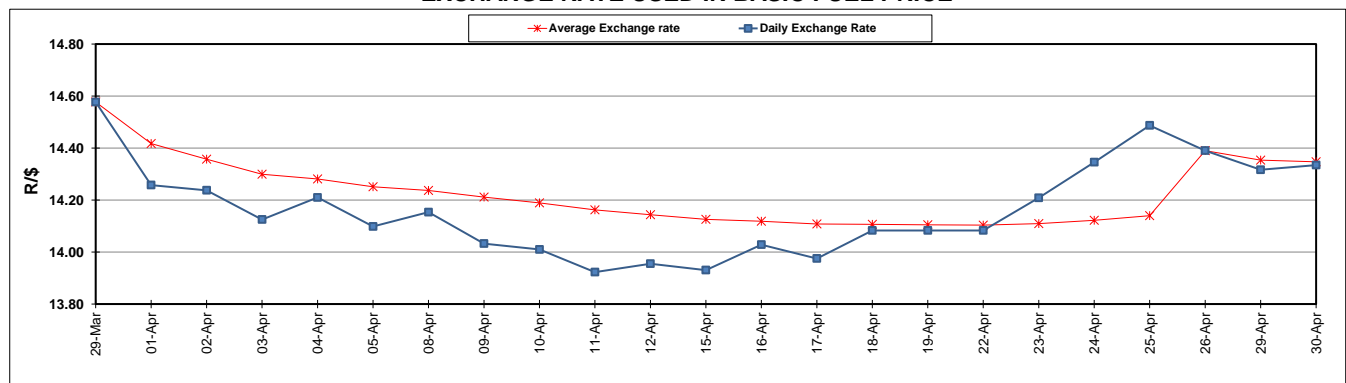
	PETROL 95 ULP	PETROL 93 ULP & LRP	DIESEL 0.05%	DIESEL 0.005%	ILL. PAR.
GAUTENG PUMP PRICE (SA c/l) AS FROM 01/05/2019	1 667.000	1 648.000	-	-	-
WHOLESALE PRICE (SA c/l) AS FROM 01/05/2019	-	-	1 488.120	1 494.520	965.678
SINGLE NATIONAL MAXIMUM RETAIL PRICE	-	-	-	-	1 231.000
BASIC FUEL PRICE - 30/04/2019 (SA c/l)	780.122	768.595	795.489	802.237	791.033
PRESS RELEASE CONTRIBUTION TO BFP 26/04/2019 - 30/04/2019 (SA c/l)	723.170	714.170	783.630	791.030	778.128
UNIT OVER/(UNDER) RECOVERY - 30/04/2019 (SA c/l)	(56.952)	(54.425)	(11.859)	(11.207)	(12.905)
AVERAGE BASIC FUEL PRICE 26/04/2019 - 30/04/2019	780.947	769.603	792.250	798.752	789.425
AVERAGE UNIT OVER/(UNDER) RECOVERY 26/04/2019 - 30/04/2019	(57.777)	(55.433)	(8.620)	(7.722)	(11.297)

### ANALYSIS MOVEMENT OF AVERAGE OVER/(UNDER) RECOVERY

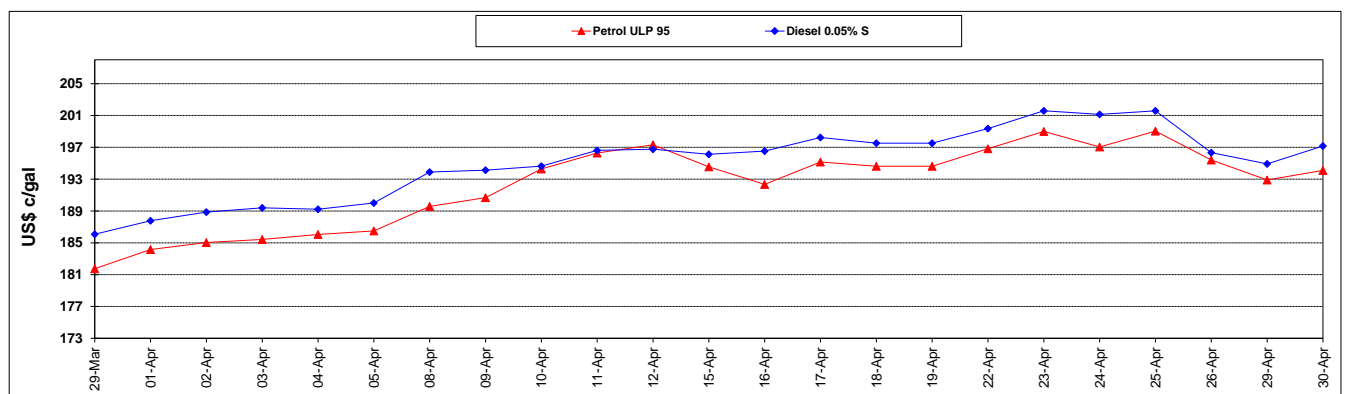
	PETROL 95	PETROL 93	DIESEL 0.05%	DIESEL 0.005%	ILL. PAR.
- MOVEMENT IN INTERNATIONAL PRODUCT PRICES	(46.515)	(44.334)	2.805	3.797	0.087
- MOVEMENT IN EXCHANGE RATE	(11.262)	(11.099)	(11.425)	(11.519)	(11.384)
AVERAGE UNIT OVER/(UNDER) RECOVERY 26/04/2019 - 30/04/2019	(57.777)	(55.433)	(8.620)	(7.722)	(11.297)

### R/\$ EXCHANGE RATE - (R/\$14.3345 - 30/04/2019)

#### EXCHANGE RATE USED IN BASIC FUEL PRICE



#### INTERNATIONAL PRODUCT PRICES OF BASKET USED IN BASIC FUEL PRICE



#### BASIC FUEL PRICE IN SA CENTS PER LITRE

