

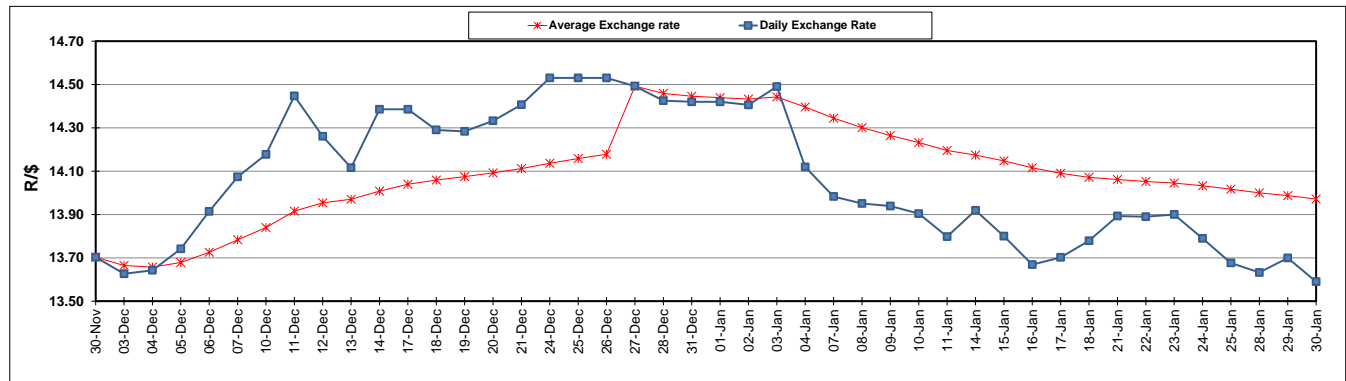
	PETROL 95 ULP	PETROL 93 ULP & LRP	DIESEL 0.05%	DIESEL 0.005%	ILL. PAR.
GAUTENG PUMP PRICE (SA c/l) AS FROM 02/01/2019	1 401.000	1 379.000	-	-	-
WHOLESALE PRICE (SA c/l) AS FROM 02/01/2019	-	-	1 313.420	1 316.820	828.678
SINGLE NATIONAL MAXIMUM RETAIL PRICE	-	-	-	-	1 067.000
BASIC FUEL PRICE - 30/01/2019 (SA c/l)	555.405	546.700	677.960	682.874	677.229
PRESS RELEASE CONTRIBUTION TO BFP 02/01/2018 - 30/01/2019 (SA c/l)	536.470	524.470	635.630	639.030	651.128
UNIT OVER/(UNDER) RECOVERY - 30/01/2019 (SA c/l)	(18.935)	(22.230)	(42.330)	(43.844)	(26.101)
AVERAGE BASIC FUEL PRICE 27/12/2018 - 30/01/2019	560.144	548.821	656.771	661.196	664.514
AVERAGE UNIT OVER/(UNDER) RECOVERY 27/12/2018 - 30/01/2019	(7.501)	(8.339)	(0.021)	(0.726)	6.294

### ANALYSIS MOVEMENT OF AVERAGE OVER/(UNDER) RECOVERY

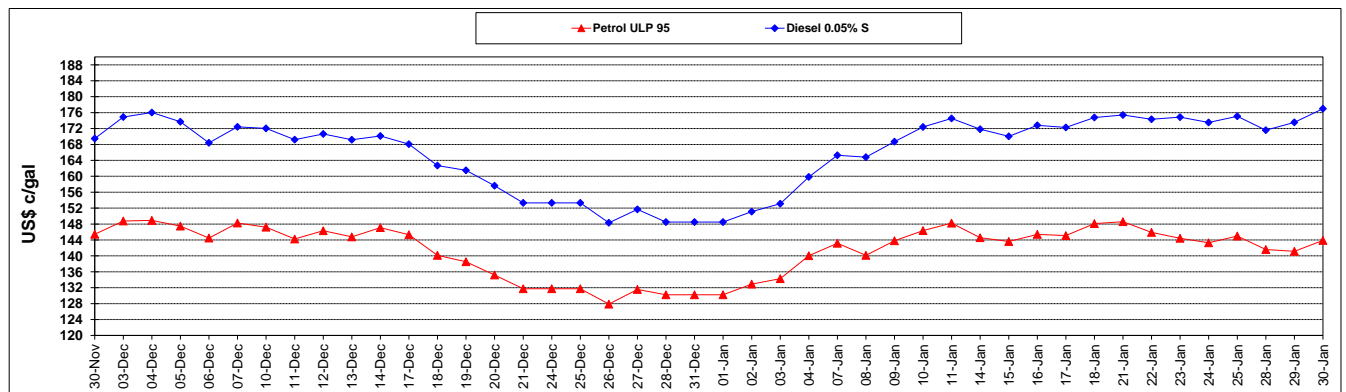
	PETROL 95	PETROL 93	DIESEL 0.05%	DIESEL 0.005%	ILL. PAR.
- MOVEMENT IN INTERNATIONAL PRODUCT PRICES	(15.772)	(16.442)	(9.719)	(10.489)	(3.518)
- MOVEMENT IN EXCHANGE RATE	8.271	8.104	9.698	9.763	9.812
AVERAGE UNIT OVER/(UNDER) RECOVERY 27/12/2018 - 30/01/2019	(7.501)	(8.339)	(0.021)	(0.726)	6.294

**R/\$ EXCHANGE RATE - (R/\$13.5900 - 30/01/2019)**

### EXCHANGE RATE USED IN BASIC FUEL PRICE



### INTERNATIONAL PRODUCT PRICES OF BASKET USED IN BASIC FUEL PRICE



### BASIC FUEL PRICE IN SA CENTS PER LITRE

