

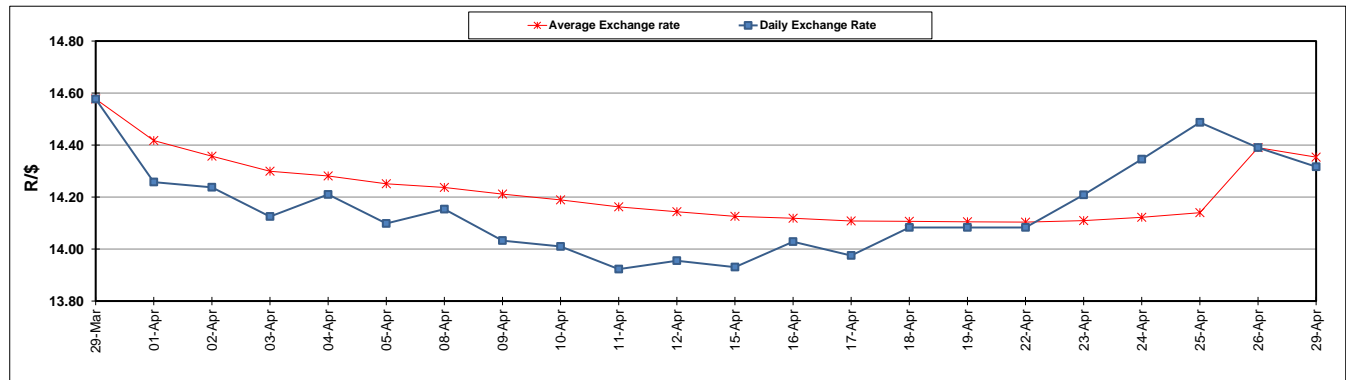
	PETROL 95 ULP	PETROL 93 ULP & LRP	DIESEL 0.05%	DIESEL 0.005%	ILL. PAR.
GAUTENG PUMP PRICE (SA c/l) AS FROM 01/05/2019	1 667.000	1 648.000	-	-	-
WHOLESALE PRICE (SA c/l) AS FROM 01/05/2019	-	-	1 488.120	1 494.520	965.678
SINGLE NATIONAL MAXIMUM RETAIL PRICE	-	-	-	-	1 231.000
BASIC FUEL PRICE - 29/04/2019 (SA c/l)	774.596	763.620	785.953	792.490	782.934
PRESS RELEASE CONTRIBUTION TO BFP 26/04/2019 - 29/04/2019 (SA c/l)	723.170	714.170	783.630	791.030	778.128
UNIT OVER/(UNDER) RECOVERY - 29/04/2019 (SA c/l)	(51.426)	(49.450)	(2.323)	(1.460)	(4.806)
AVERAGE BASIC FUEL PRICE 26/04/2019 - 29/04/2019	781.359	770.108	790.631	797.010	788.622
AVERAGE UNIT OVER/(UNDER) RECOVERY 26/04/2019 - 29/04/2019	(58.189)	(55.938)	(7.001)	(5.980)	(10.494)

### ANALYSIS MOVEMENT OF AVERAGE OVER/(UNDER) RECOVERY

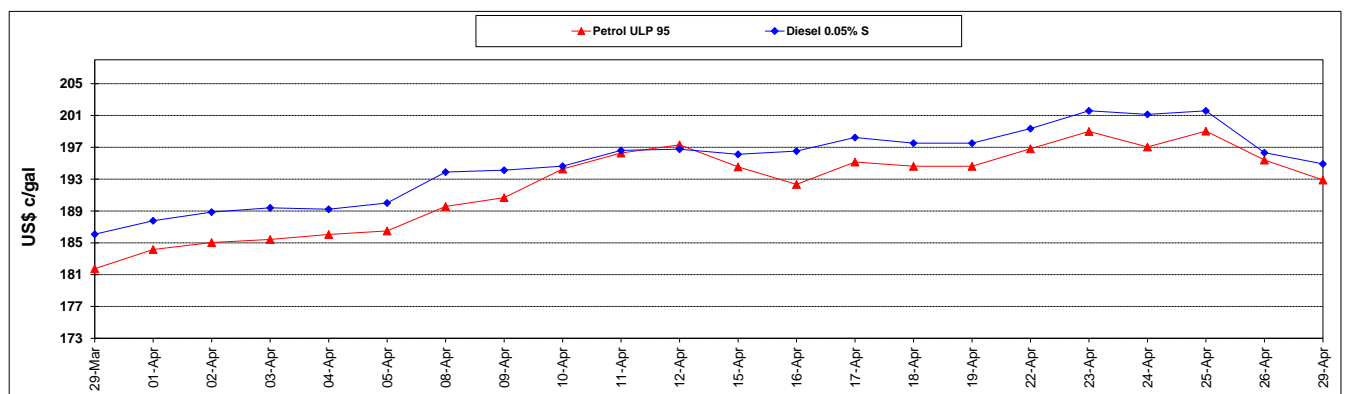
	PETROL 95	PETROL 93	DIESEL 0.05%	DIESEL 0.005%	ILL. PAR.
- MOVEMENT IN INTERNATIONAL PRODUCT PRICES	(46.583)	(44.499)	4.743	5.859	1.220
- MOVEMENT IN EXCHANGE RATE	(11.606)	(11.439)	(11.744)	(11.839)	(11.714)
AVERAGE UNIT OVER/(UNDER) RECOVERY 26/04/2019 - 29/04/2019	(58.189)	(55.938)	(7.001)	(5.980)	(10.494)

### R/\$ EXCHANGE RATE - (R/\$14.3165 - 29/04/2019)

#### EXCHANGE RATE USED IN BASIC FUEL PRICE



#### INTERNATIONAL PRODUCT PRICES OF BASKET USED IN BASIC FUEL PRICE



#### BASIC FUEL PRICE IN SA CENTS PER LITRE

