

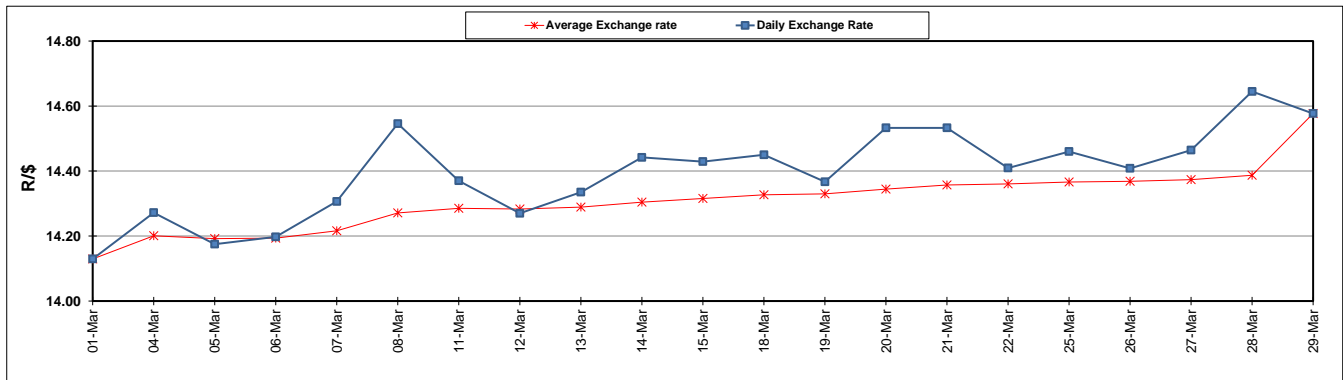
	PETROL 95 ULP	PETROL 93 ULP & LRP	DIESEL 0.05%	DIESEL 0.005%	ILL. PAR.
GAUTENG PUMP PRICE (SA c/l) AS FROM 03/04/2019	1 613.000	1 594.000	-	-	-
WHOLESALE PRICE (SA c/l) AS FROM 03/04/2019	-	-	1 487.120	1 494.520	962.678
SINGLE NATIONAL MAXIMUM RETAIL PRICE	-	-	-	-	1 227.000
BASIC FUEL PRICE - 29/03/2019 (SA c/l)	746.878	738.204	767.462	774.707	766.966
PRESS RELEASE CONTRIBUTION TO BFP 29/03/2019 - 29/03/2019 (SA c/l)	617.470	605.470	727.630	734.030	722.128
UNIT OVER/(UNDER) RECOVERY - 29/03/2019 (SA c/l)	(129.408)	(132.734)	(39.832)	(40.677)	(44.838)
AVERAGE BASIC FUEL PRICE 29/03/2019 - 29/03/2019	746.878	738.204	767.462	774.707	766.966
AVERAGE UNIT OVER/(UNDER) RECOVERY 29/03/2019 - 29/03/2019	(129.408)	(132.734)	(39.832)	(40.677)	(44.838)

ANALYSIS MOVEMENT OF AVERAGE OVER/(UNDER) RECOVERY

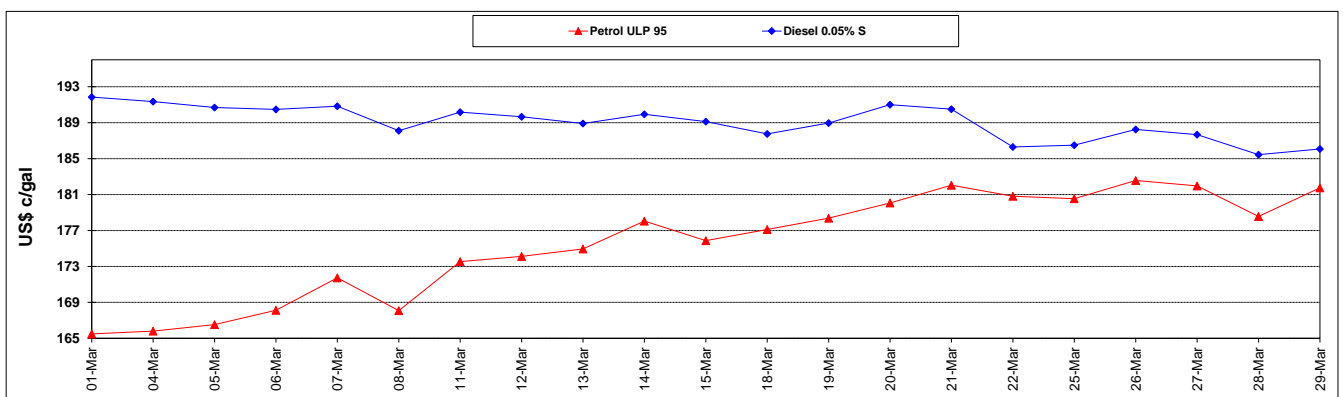
	PETROL 95	PETROL 93	DIESEL 0.05%	DIESEL 0.005%	ILL. PAR.
- MOVEMENT IN INTERNATIONAL PRODUCT PRICES	(119.678)	(123.117)	(29.834)	(30.585)	(34.846)
- MOVEMENT IN EXCHANGE RATE	(9.730)	(9.617)	(9.998)	(10.092)	(9.992)
AVERAGE UNIT OVER/(UNDER) RECOVERY 29/03/2019 - 29/03/2019	(129.408)	(132.734)	(39.832)	(40.677)	(44.838)

R/\$ EXCHANGE RATE - (R/\$14.5770 - 29/03/2019)

EXCHANGE RATE USED IN BASIC FUEL PRICE



INTERNATIONAL PRODUCT PRICES OF BASKET USED IN BASIC FUEL PRICE



BASIC FUEL PRICE IN SA CENTS PER LITRE

