

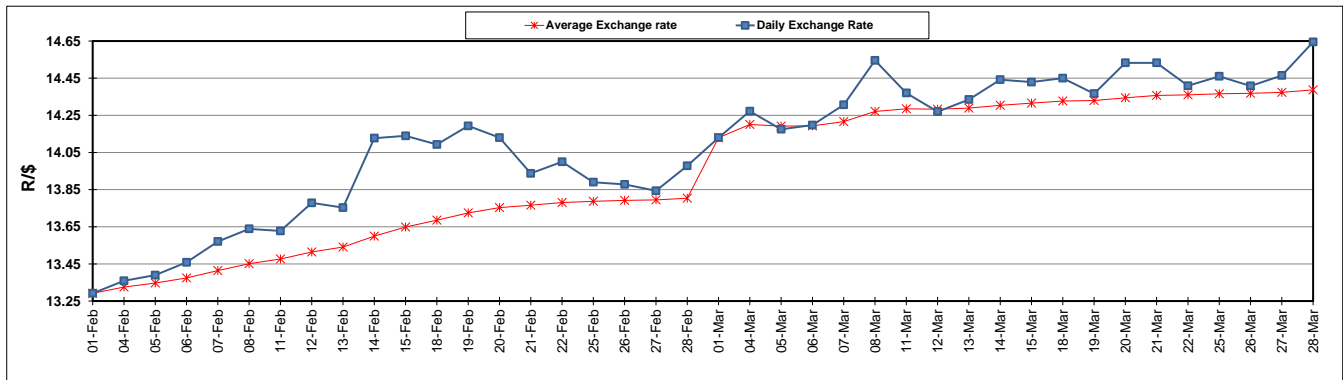
	PETROL 95 ULP	PETROL 93 ULP & LRP	DIESEL 0.05%	DIESEL 0.005%	ILL. PAR.
GAUTENG PUMP PRICE (SA c/l) AS FROM 06/03/2019	1 482.000	1 460.000	-	-	-
WHOLESALE PRICE (SA c/l) AS FROM 06/03/2019	-	-	1 405.420	1 411.820	899.678
SINGLE NATIONAL MAXIMUM RETAIL PRICE	-	-	-	-	1 162.000
BASIC FUEL PRICE - 28/03/2019 (SA c/l)	737.914	727.972	768.507	775.076	767.253
PRESS RELEASE CONTRIBUTION TO BFP 06/03/2019 - 28/03/2019 (SA c/l)	617.470	605.470	727.630	734.030	722.128
UNIT OVER/(UNDER) RECOVERY - 28/03/2019 (SA c/l)	(120.444)	(122.502)	(40.877)	(41.046)	(45.125)
AVERAGE BASIC FUEL PRICE 01/03/2019 - 28/03/2019	712.435	702.680	769.373	776.717	766.310
AVERAGE UNIT OVER/(UNDER) RECOVERY 01/03/2019 - 28/03/2019	(106.065)	(108.310)	(55.393)	(56.637)	(55.582)

ANALYSIS MOVEMENT OF AVERAGE OVER/(UNDER) RECOVERY

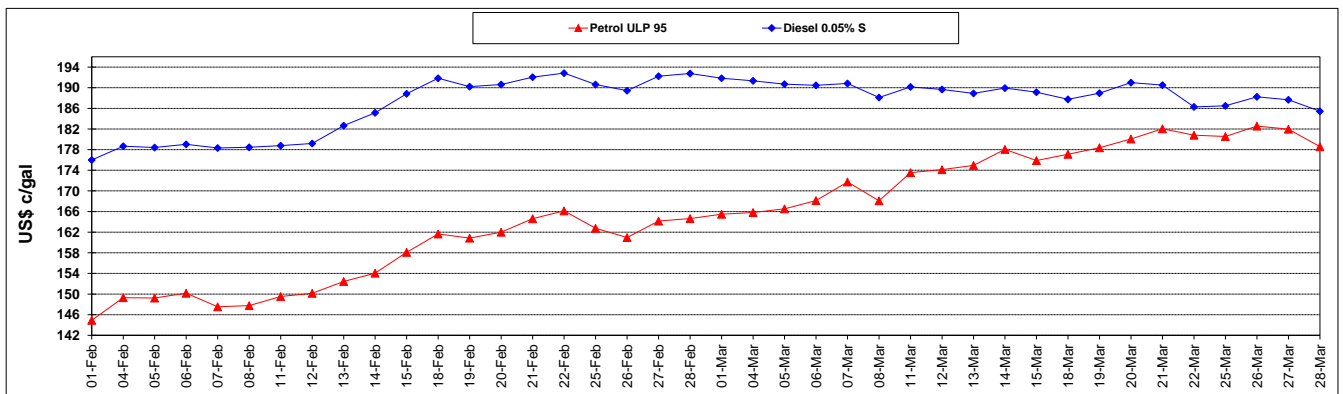
	PETROL 95	PETROL 93	DIESEL 0.05%	DIESEL 0.005%	ILL. PAR.
- MOVEMENT IN INTERNATIONAL PRODUCT PRICES	(77.181)	(79.821)	(24.200)	(25.146)	(24.513)
- MOVEMENT IN EXCHANGE RATE	(28.884)	(28.489)	(31.193)	(31.491)	(31.069)
AVERAGE UNIT OVER/(UNDER) RECOVERY 01/03/2019 - 28/03/2019	(106.065)	(108.310)	(55.393)	(56.637)	(55.582)

R/\$ EXCHANGE RATE - (R/\$14.6448 - 28/03/2019)

EXCHANGE RATE USED IN BASIC FUEL PRICE



INTERNATIONAL PRODUCT PRICES OF BASKET USED IN BASIC FUEL PRICE



BASIC FUEL PRICE IN SA CENTS PER LITRE

