

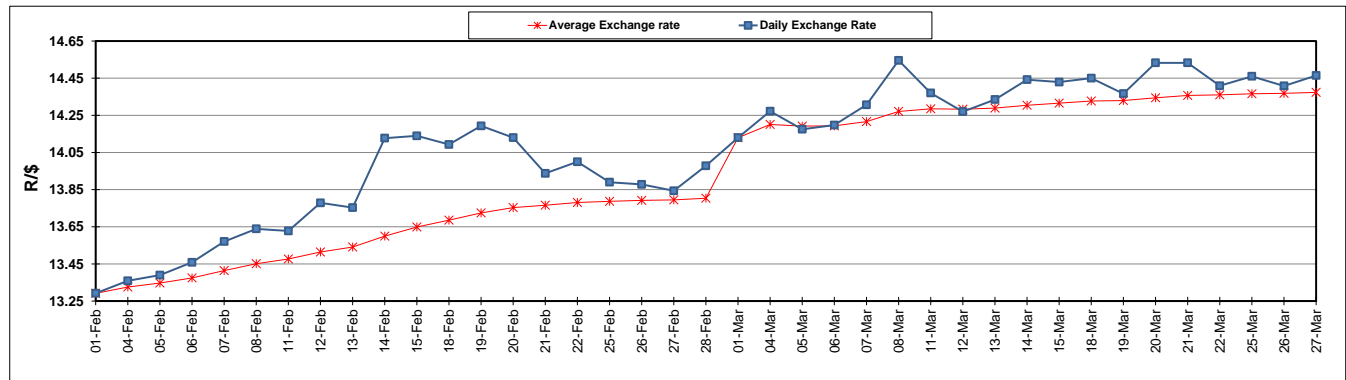
	PETROL 95 ULP	PETROL 93 ULP & LRP	DIESEL 0.05%	DIESEL 0.005%	ILL. PAR.
GAUTENG PUMP PRICE (SA c/l) AS FROM 06/03/2019	1 482.000	1 460.000	-	-	-
WHOLESALE PRICE (SA c/l) AS FROM 06/03/2019	-	-	1 405.420	1 411.820	899.678
SINGLE NATIONAL MAXIMUM RETAIL PRICE	-	-	-	-	1 162.000
BASIC FUEL PRICE - 27/03/2019 (SA c/l)	741.988	733.762	767.688	775.300	769.578
PRESS RELEASE CONTRIBUTION TO BFP 06/03/2019 - 27/03/2019 (SA c/l)	617.470	605.470	727.630	734.030	722.128
UNIT OVER/(UNDER) RECOVERY - 27/03/2019 (SA c/l)	(124.518)	(128.292)	(40.058)	(41.270)	(47.450)
AVERAGE BASIC FUEL PRICE 01/03/2019 - 27/03/2019	711.094	701.348	769.419	776.804	766.260
AVERAGE UNIT OVER/(UNDER) RECOVERY 01/03/2019 - 27/03/2019	(105.309)	(107.563)	(56.157)	(57.458)	(56.132)

### ANALYSIS MOVEMENT OF AVERAGE OVER/(UNDER) RECOVERY

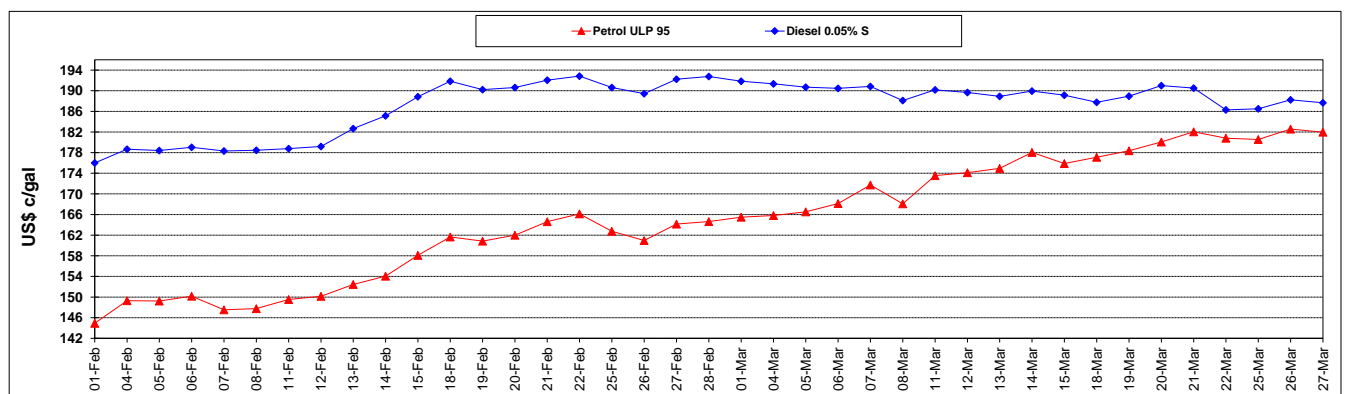
	PETROL 95	PETROL 93	DIESEL 0.05%	DIESEL 0.005%	ILL. PAR.
- MOVEMENT IN INTERNATIONAL PRODUCT PRICES	(77.123)	(79.764)	(25.661)	(26.669)	(25.761)
- MOVEMENT IN EXCHANGE RATE	(28.185)	(27.798)	(30.496)	(30.789)	(30.371)
AVERAGE UNIT OVER/(UNDER) RECOVERY 01/03/2019 - 27/03/2019	(105.309)	(107.563)	(56.157)	(57.458)	(56.132)

**R/\$ EXCHANGE RATE - (R/\$14.4643 - 27/03/2019)**

### EXCHANGE RATE USED IN BASIC FUEL PRICE



### INTERNATIONAL PRODUCT PRICES OF BASKET USED IN BASIC FUEL PRICE



### BASIC FUEL PRICE IN SA CENTS PER LITRE

