

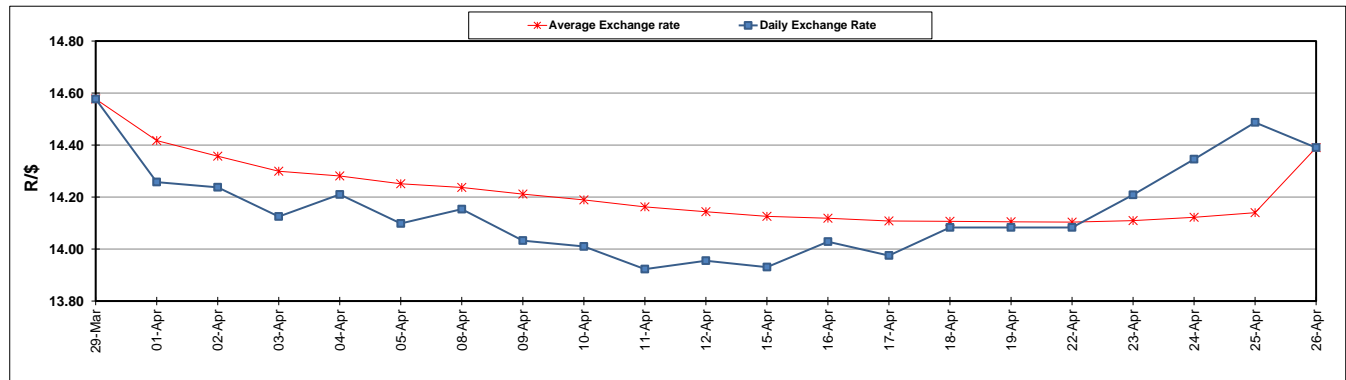
	PETROL 95 ULP	PETROL 93 ULP & LRP	DIESEL 0.05%	DIESEL 0.005%	ILL. PAR.
GAUTENG PUMP PRICE (SA c/l) AS FROM 01/05/2019	1 667.000	1 648.000	-	-	-
WHOLESALE PRICE (SA c/l) AS FROM 01/05/2019	-	-	1 488.120	1 494.520	965.678
SINGLE NATIONAL MAXIMUM RETAIL PRICE	-	-	-	-	1 231.000
BASIC FUEL PRICE - 26/04/2019 (SA c/l)	788.122	776.595	795.309	801.530	794.309
PRESS RELEASE CONTRIBUTION TO BFP 26/04/2019 - 26/04/2019 (SA c/l)	723.170	714.170	783.630	791.030	778.128
UNIT OVER/(UNDER) RECOVERY - 26/04/2019 (SA c/l)	(64.952)	(62.425)	(11.679)	(10.500)	(16.181)
AVERAGE BASIC FUEL PRICE 26/04/2019 - 26/04/2019	788.122	776.595	795.309	801.530	794.309
AVERAGE UNIT OVER/(UNDER) RECOVERY 26/04/2019 - 26/04/2019	(64.952)	(62.425)	(11.679)	(10.500)	(16.181)

### ANALYSIS MOVEMENT OF AVERAGE OVER/(UNDER) RECOVERY

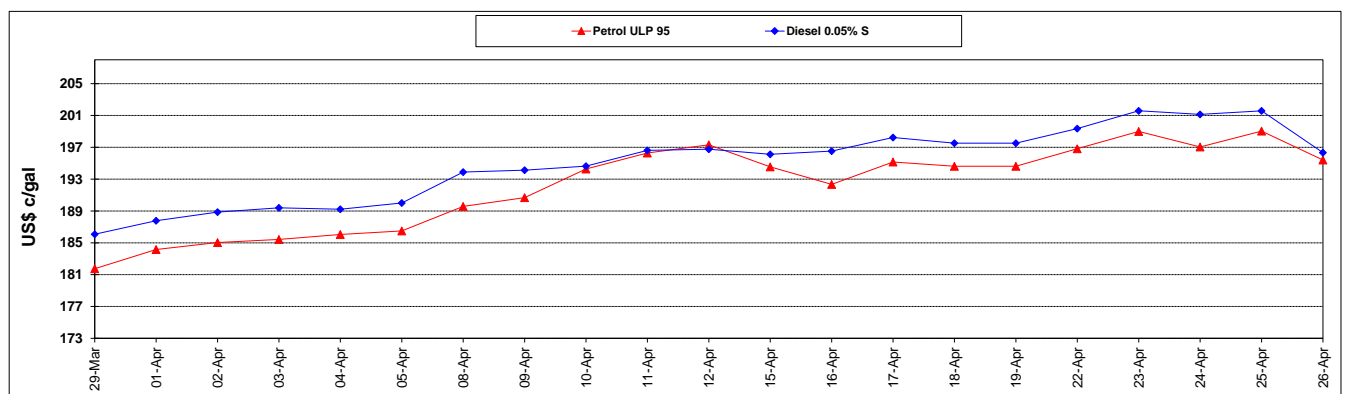
	PETROL 95	PETROL 93	DIESEL 0.05%	DIESEL 0.005%	ILL. PAR.
- MOVEMENT IN INTERNATIONAL PRODUCT PRICES	(51.265)	(48.938)	2.133	3.420	(2.387)
- MOVEMENT IN EXCHANGE RATE	(13.687)	(13.487)	(13.812)	(13.920)	(13.794)
AVERAGE UNIT OVER/(UNDER) RECOVERY 26/04/2019 - 26/04/2019	(64.952)	(62.425)	(11.679)	(10.500)	(16.181)

**R/\$ EXCHANGE RATE - (R/\$14.3900 - 26/04/2019)**

### EXCHANGE RATE USED IN BASIC FUEL PRICE



### INTERNATIONAL PRODUCT PRICES OF BASKET USED IN BASIC FUEL PRICE



### BASIC FUEL PRICE IN SA CENTS PER LITRE

