

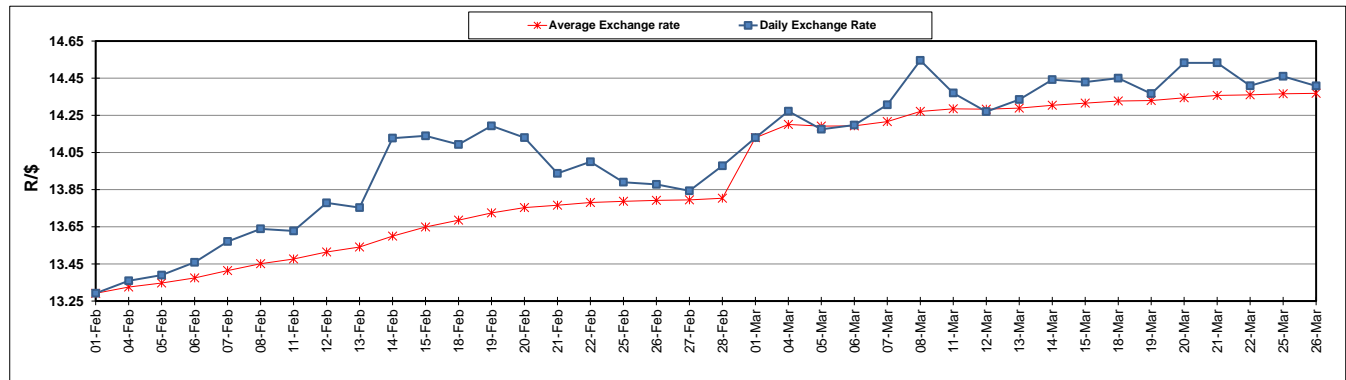
	PETROL 95 ULP	PETROL 93 ULP & LRP	DIESEL 0.05%	DIESEL 0.005%	ILL. PAR.
GAUTENG PUMP PRICE (SA c/l) AS FROM 06/03/2019	1 482.000	1 460.000	-	-	-
WHOLESALE PRICE (SA c/l) AS FROM 06/03/2019	-	-	1 405.420	1 411.820	899.678
SINGLE NATIONAL MAXIMUM RETAIL PRICE	-	-	-	-	1 162.000
BASIC FUEL PRICE - 26/03/2019 (SA c/l)	741.463	732.352	766.976	774.081	769.179
PRESS RELEASE CONTRIBUTION TO BFP 06/03/2019 - 26/03/2019 (SA c/l)	617.470	605.470	727.630	734.030	722.128
UNIT OVER/(UNDER) RECOVERY - 26/03/2019 (SA c/l)	(123.993)	(126.882)	(39.346)	(40.051)	(47.051)
AVERAGE BASIC FUEL PRICE 01/03/2019 - 26/03/2019	709.378	699.548	769.515	776.887	766.076
AVERAGE UNIT OVER/(UNDER) RECOVERY 01/03/2019 - 26/03/2019	(104.242)	(106.411)	(57.052)	(58.357)	(56.614)

ANALYSIS MOVEMENT OF AVERAGE OVER/(UNDER) RECOVERY

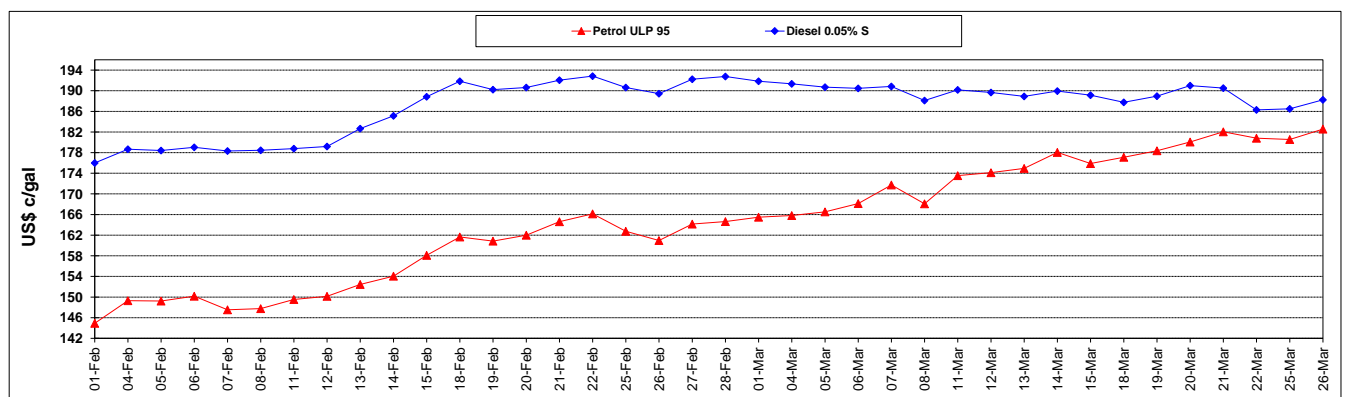
	PETROL 95	PETROL 93	DIESEL 0.05%	DIESEL 0.005%	ILL. PAR.
- MOVEMENT IN INTERNATIONAL PRODUCT PRICES	(76.362)	(78.918)	(26.809)	(27.824)	(26.507)
- MOVEMENT IN EXCHANGE RATE	(27.879)	(27.493)	(30.243)	(30.533)	(30.108)
AVERAGE UNIT OVER/(UNDER) RECOVERY 01/03/2019 - 26/03/2019	(104.242)	(106.411)	(57.052)	(58.357)	(56.614)

R/\$ EXCHANGE RATE - (R/\$14.4083 - 26/03/2019)

EXCHANGE RATE USED IN BASIC FUEL PRICE



INTERNATIONAL PRODUCT PRICES OF BASKET USED IN BASIC FUEL PRICE



BASIC FUEL PRICE IN SA CENTS PER LITRE

