

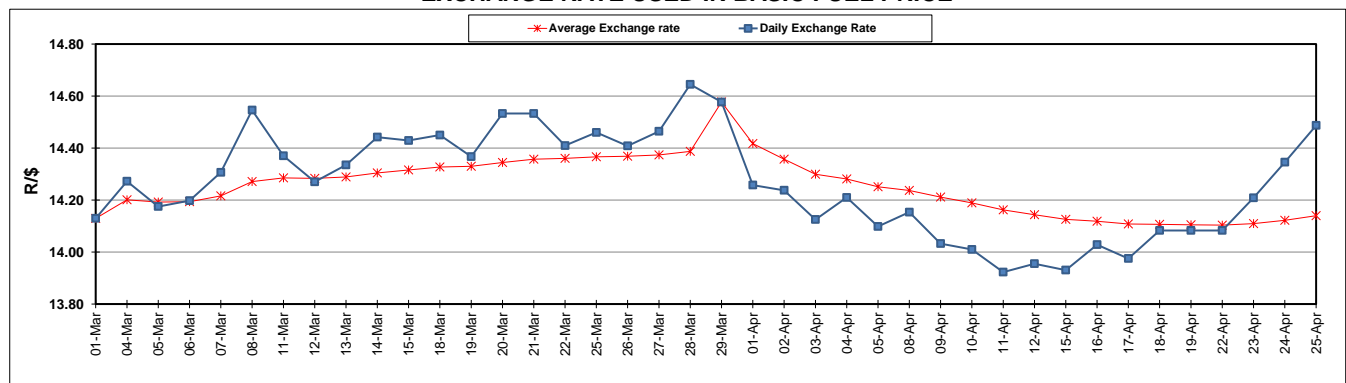
	PETROL 95 ULP	PETROL 93 ULP & LRP	DIESEL 0.05%	DIESEL 0.005%	ILL. PAR.
GAUTENG PUMP PRICE (SA c/l) AS FROM 03/04/2019	1 613.000	1 594.000	-	-	-
WHOLESALE PRICE (SA c/l) AS FROM 03/04/2019	-	-	1 487.120	1 494.520	962.678
SINGLE NATIONAL MAXIMUM RETAIL PRICE	-	-	-	-	1 227.000
BASIC FUEL PRICE - 25/04/2019 (SA c/l)	807.325	796.216	820.850	826.410	817.811
PRESS RELEASE CONTRIBUTION TO BFP 03/04/2019 - 25/04/2019 (SA c/l)	723.170	714.170	783.630	791.030	778.128
UNIT OVER/(UNDER) RECOVERY - 25/04/2019 (SA c/l)	(84.155)	(82.046)	(37.220)	(35.380)	(39.683)
AVERAGE BASIC FUEL PRICE 29/03/2019 - 25/04/2019	761.818	750.381	776.131	782.024	772.513
AVERAGE UNIT OVER/(UNDER) RECOVERY 29/03/2019 - 25/04/2019	(54.503)	(52.516)	(0.901)	0.456	(2.785)

ANALYSIS MOVEMENT OF AVERAGE OVER/(UNDER) RECOVERY

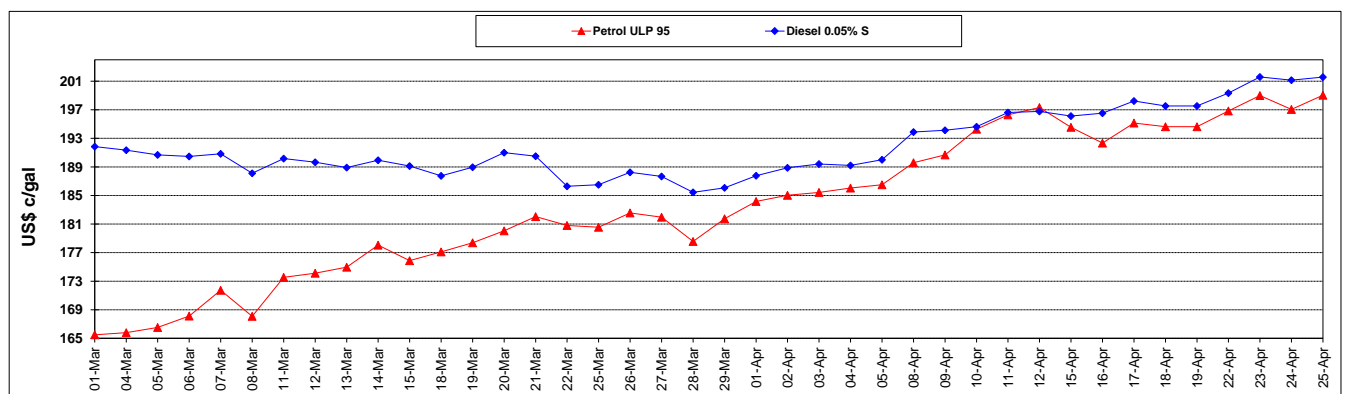
	PETROL 95	PETROL 93	DIESEL 0.05%	DIESEL 0.005%	ILL. PAR.
- MOVEMENT IN INTERNATIONAL PRODUCT PRICES	(67.810)	(65.624)	(14.458)	(13.204)	(16.279)
- MOVEMENT IN EXCHANGE RATE	13.307	13.108	13.557	13.660	13.494
AVERAGE UNIT OVER/(UNDER) RECOVERY 29/03/2019 - 25/04/2019	(54.503)	(52.516)	(0.901)	0.456	(2.785)

R/\$ EXCHANGE RATE - (R/\$14.4870 - 25/04/2019)

EXCHANGE RATE USED IN BASIC FUEL PRICE



INTERNATIONAL PRODUCT PRICES OF BASKET USED IN BASIC FUEL PRICE



BASIC FUEL PRICE IN SA CENTS PER LITRE

