

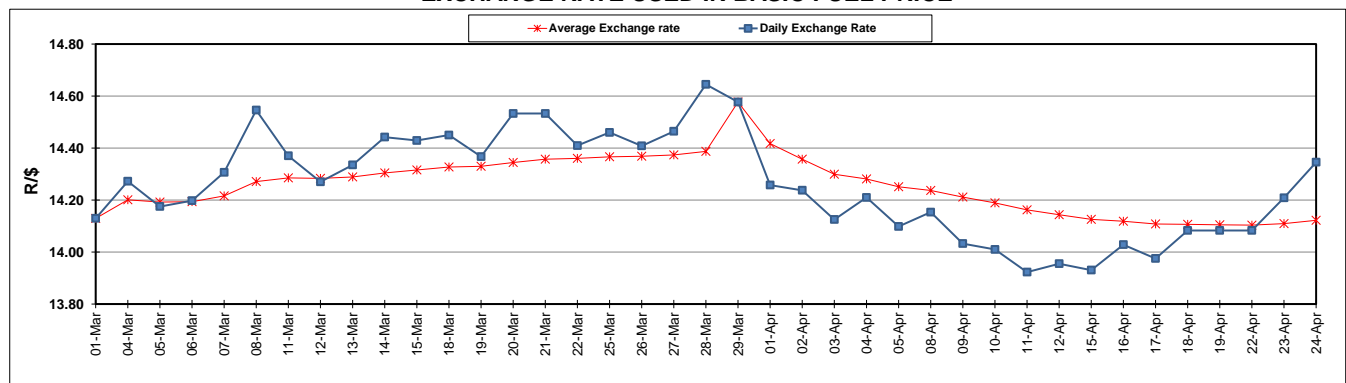
	PETROL 95 ULP	PETROL 93 ULP & LRP	DIESEL 0.05%	DIESEL 0.005%	ILL. PAR.
GAUTENG PUMP PRICE (SA c/l) AS FROM 03/04/2019	1 613.000	1 594.000	-	-	-
WHOLESALE PRICE (SA c/l) AS FROM 03/04/2019	-	-	1 487.120	1 494.520	962.678
SINGLE NATIONAL MAXIMUM RETAIL PRICE	-	-	-	-	1 227.000
BASIC FUEL PRICE - 24/04/2019 (SA c/l)	791.959	779.439	811.250	816.685	805.283
PRESS RELEASE CONTRIBUTION TO BFP 03/04/2019 - 24/04/2019 (SA c/l)	723.170	714.170	783.630	791.030	778.128
UNIT OVER/(UNDER) RECOVERY - 24/04/2019 (SA c/l)	(68.789)	(65.269)	(27.620)	(25.655)	(27.155)
AVERAGE BASIC FUEL PRICE 29/03/2019 - 24/04/2019	759.423	747.968	773.778	779.688	770.129
AVERAGE UNIT OVER/(UNDER) RECOVERY 29/03/2019 - 24/04/2019	(52.943)	(50.961)	1.010	2.342	(0.843)

ANALYSIS MOVEMENT OF AVERAGE OVER/(UNDER) RECOVERY

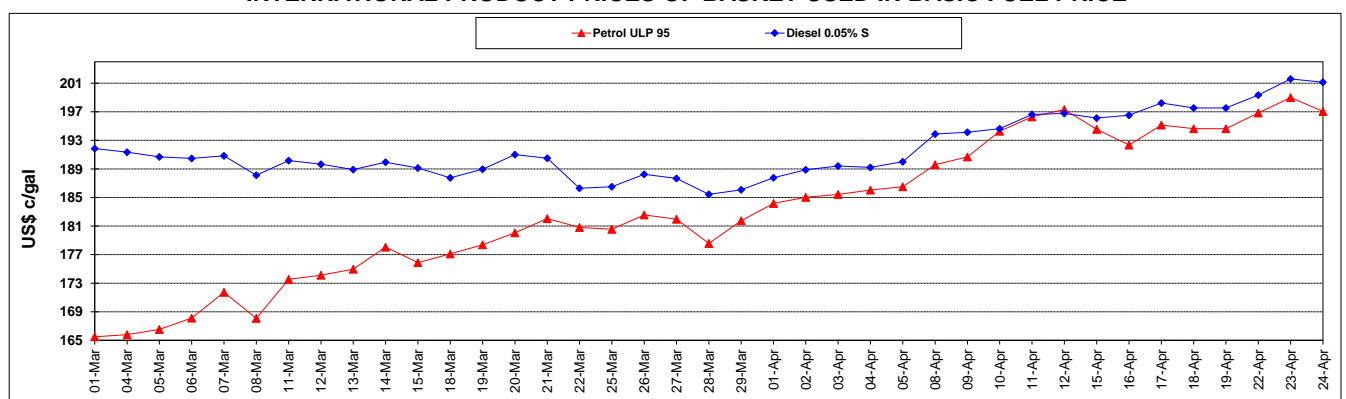
	PETROL 95	PETROL 93	DIESEL 0.05%	DIESEL 0.005%	ILL. PAR.
- MOVEMENT IN INTERNATIONAL PRODUCT PRICES	(67.203)	(65.007)	(13.521)	(12.300)	(15.306)
- MOVEMENT IN EXCHANGE RATE	14.261	14.046	14.531	14.642	14.463
AVERAGE UNIT OVER/(UNDER) RECOVERY 29/03/2019 - 24/04/2019	(52.943)	(50.961)	1.010	2.342	(0.843)

R/\$ EXCHANGE RATE - (R/\$14.3455 - 24/04/2019)

EXCHANGE RATE USED IN BASIC FUEL PRICE



INTERNATIONAL PRODUCT PRICES OF BASKET USED IN BASIC FUEL PRICE



BASIC FUEL PRICE IN SA CENTS PER LITRE

