

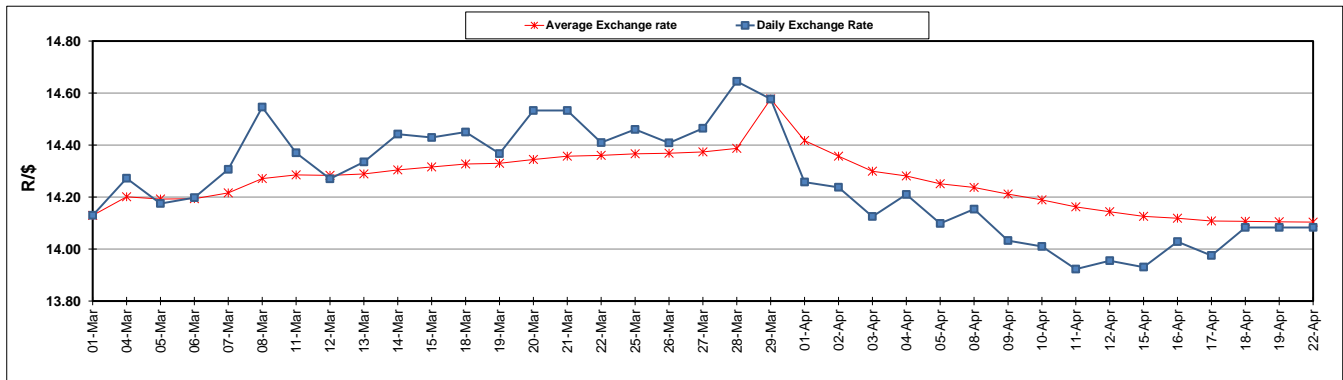
	PETROL 95 ULP	PETROL 93 ULP & LRP	DIESEL 0.05%	DIESEL 0.005%	ILL. PAR.
GAUTENG PUMP PRICE (SA c/l) AS FROM 03/04/2019	1 613.000	1 594.000	-	-	-
WHOLESALE PRICE (SA c/l) AS FROM 03/04/2019	-	-	1 487.120	1 494.520	962.678
SINGLE NATIONAL MAXIMUM RETAIL PRICE	-	-	-	-	1 227.000
BASIC FUEL PRICE - 22/04/2019 (SA c/l)	776.787	764.266	789.835	795.313	784.277
PRESS RELEASE CONTRIBUTION TO BFP 03/04/2019 - 22/04/2019 (SA c/l)	723.170	714.170	783.630	791.030	778.128
UNIT OVER/(UNDER) RECOVERY - 22/04/2019 (SA c/l)	(53.617)	(50.096)	(6.205)	(4.283)	(6.149)
AVERAGE BASIC FUEL PRICE 29/03/2019 - 22/04/2019	755.606	744.268	769.720	775.678	766.322
AVERAGE UNIT OVER/(UNDER) RECOVERY 29/03/2019 - 22/04/2019	(51.089)	(49.281)	4.027	5.293	1.924

ANALYSIS MOVEMENT OF AVERAGE OVER/(UNDER) RECOVERY

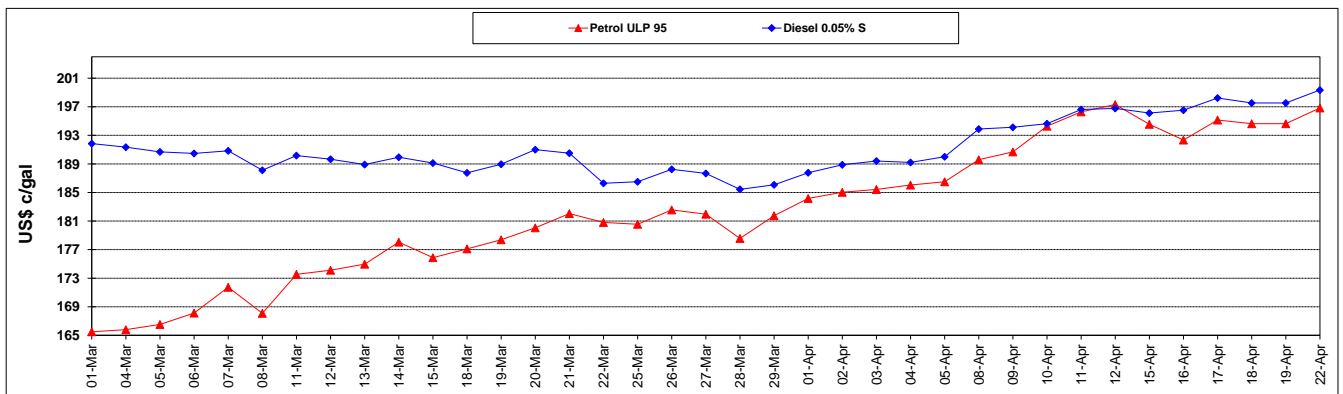
	PETROL 95	PETROL 93	DIESEL 0.05%	DIESEL 0.005%	ILL. PAR.
- MOVEMENT IN INTERNATIONAL PRODUCT PRICES	(66.278)	(64.241)	(11.444)	(10.299)	(13.480)
- MOVEMENT IN EXCHANGE RATE	15.189	14.961	15.472	15.592	15.404
AVERAGE UNIT OVER/(UNDER) RECOVERY 29/03/2019 - 22/04/2019	(51.089)	(49.281)	4.027	5.293	1.924

R/\$ EXCHANGE RATE - (R/\$14.0830 - 22/04/2019)

EXCHANGE RATE USED IN BASIC FUEL PRICE



INTERNATIONAL PRODUCT PRICES OF BASKET USED IN BASIC FUEL PRICE



BASIC FUEL PRICE IN SA CENTS PER LITRE

