

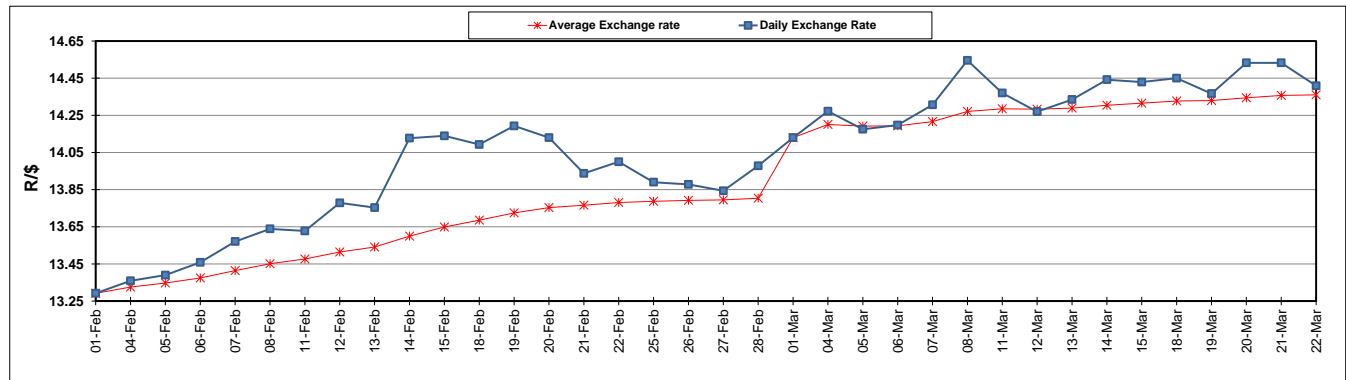
	PETROL 95 ULP	PETROL 93 ULP & LRP	DIESEL 0.05%	DIESEL 0.005%	ILL. PAR.
GAUTENG PUMP PRICE (SA c/l) AS FROM 06/03/2019	1 482.000	1 460.000	-	-	-
WHOLESALE PRICE (SA c/l) AS FROM 06/03/2019	-	-	1 405.420	1 411.820	899.678
SINGLE NATIONAL MAXIMUM RETAIL PRICE	-	-	-	-	1 162.000
BASIC FUEL PRICE - 22/03/2019 (SA c/l)	734.789	725.923	759.562	766.257	762.638
PRESS RELEASE CONTRIBUTION TO BFP 06/03/2019 - 22/03/2019 (SA c/l)	617.470	605.470	727.630	734.030	722.128
UNIT OVER/(UNDER) RECOVERY - 22/03/2019 (SA c/l)	(117.319)	(120.453)	(31.932)	(32.227)	(40.510)
AVERAGE BASIC FUEL PRICE 01/03/2019 - 22/03/2019	705.689	695.762	770.081	777.462	765.898
AVERAGE UNIT OVER/(UNDER) RECOVERY 01/03/2019 - 22/03/2019	(102.094)	(104.167)	(59.514)	(60.870)	(58.020)

ANALYSIS MOVEMENT OF AVERAGE OVER/(UNDER) RECOVERY

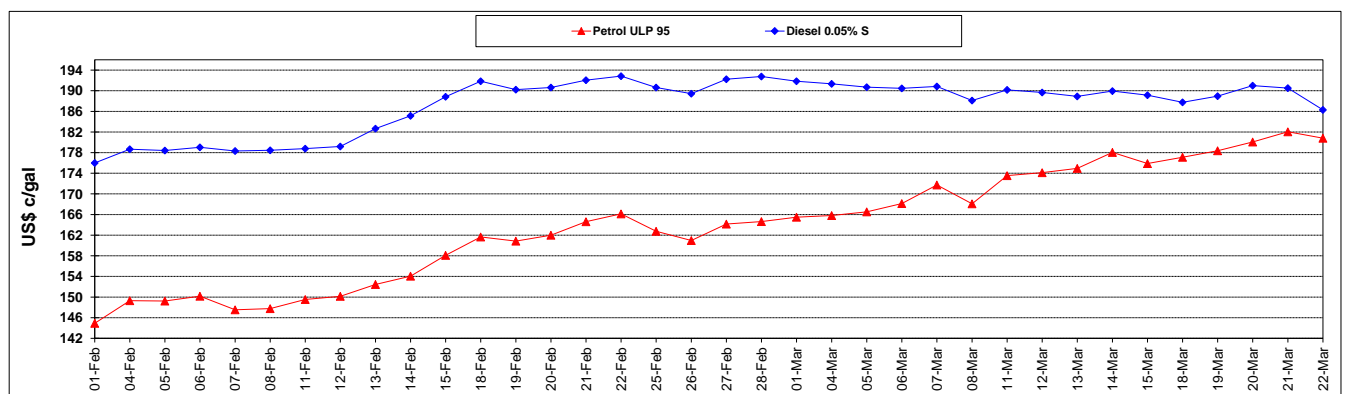
	PETROL 95	PETROL 93	DIESEL 0.05%	DIESEL 0.005%	ILL. PAR.
- MOVEMENT IN INTERNATIONAL PRODUCT PRICES	(74.747)	(77.204)	(29.670)	(30.740)	(28.339)
- MOVEMENT IN EXCHANGE RATE	(27.347)	(26.963)	(29.843)	(30.129)	(29.681)
AVERAGE UNIT OVER/(UNDER) RECOVERY 01/03/2019 - 22/03/2019	(102.094)	(104.167)	(59.514)	(60.870)	(58.020)

R/\$ EXCHANGE RATE - (R/\$14.4093 - 22/03/2019)

EXCHANGE RATE USED IN BASIC FUEL PRICE



INTERNATIONAL PRODUCT PRICES OF BASKET USED IN BASIC FUEL PRICE



BASIC FUEL PRICE IN SA CENTS PER LITRE

