

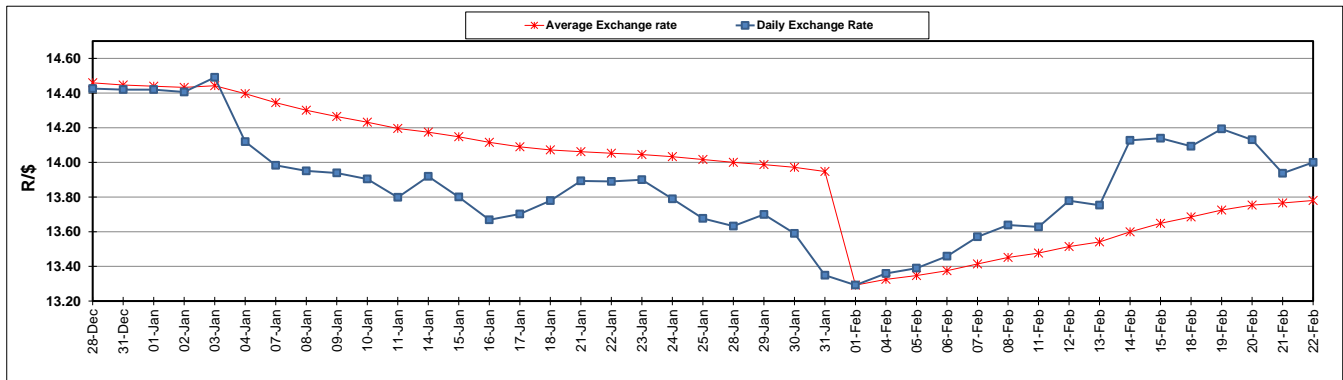
	PETROL 95 ULP	PETROL 93 ULP & LRP	DIESEL 0.05%	DIESEL 0.005%	ILL. PAR.
GAUTENG PUMP PRICE (SA c/l) AS FROM 06/02/2019	1 408.000	1 386.000	-	-	-
WHOLESALE PRICE (SA c/l) AS FROM 06/02/2019	-	-	1 314.420	1 318.820	823.678
SINGLE NATIONAL MAXIMUM RETAIL PRICE	-	-	-	-	1 060.000
BASIC FUEL PRICE - 22/02/2019 (SA c/l)	662.501	650.522	765.748	772.677	756.657
PRESS RELEASE CONTRIBUTION TO BFP 06/02/2019 - 22/02/2019 (SA c/l)	543.470	531.470	636.630	641.030	646.128
UNIT OVER/(UNDER) RECOVERY - 22/02/2019 (SA c/l)	(119.031)	(119.052)	(129.118)	(131.647)	(110.529)
AVERAGE BASIC FUEL PRICE 01/02/2019 - 22/02/2019	609.301	598.109	721.237	727.230	717.819
AVERAGE UNIT OVER/(UNDER) RECOVERY 01/02/2019 - 22/02/2019	(67.144)	(67.951)	(84.795)	(86.575)	(70.753)

ANALYSIS MOVEMENT OF AVERAGE OVER/(UNDER) RECOVERY

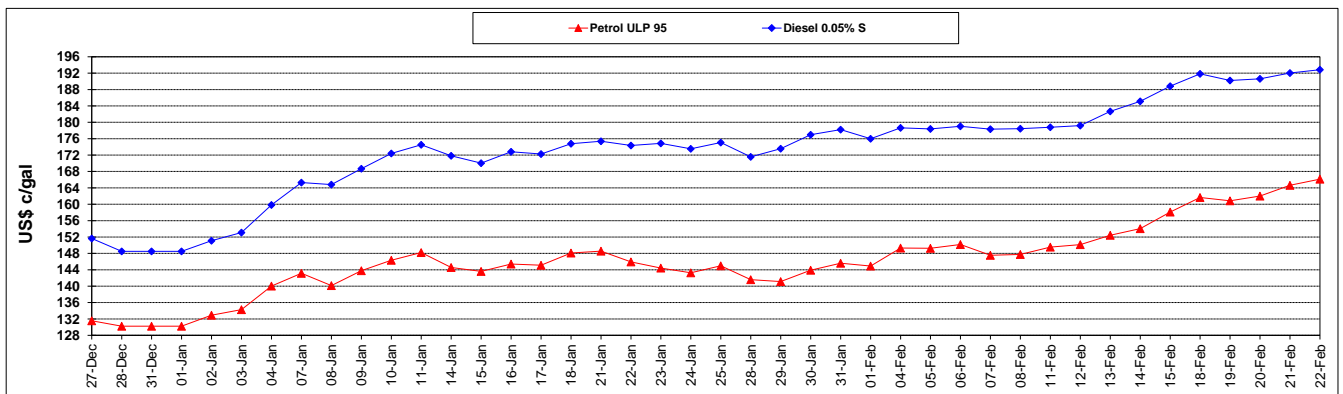
	PETROL 95	PETROL 93	DIESEL 0.05%	DIESEL 0.005%	ILL. PAR.
- MOVEMENT IN INTERNATIONAL PRODUCT PRICES	(75.592)	(76.245)	(94.796)	(96.660)	(80.707)
- MOVEMENT IN EXCHANGE RATE	8.449	8.294	10.002	10.085	9.954
AVERAGE UNIT OVER/(UNDER) RECOVERY 01/02/2019 - 22/02/2019	(67.144)	(67.951)	(84.795)	(86.575)	(70.753)

R/\$ EXCHANGE RATE - (R/\$14.0000 - 22/02/2019)

EXCHANGE RATE USED IN BASIC FUEL PRICE



INTERNATIONAL PRODUCT PRICES OF BASKET USED IN BASIC FUEL PRICE



BASIC FUEL PRICE IN SA CENTS PER LITRE

