

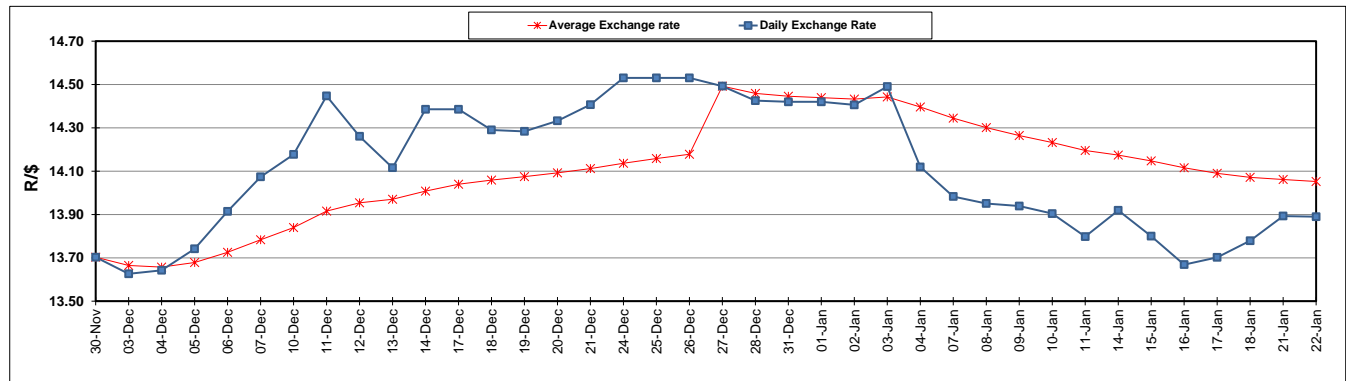
	PETROL 95 ULP	PETROL 93 ULP & LRP	DIESEL 0.05%	DIESEL 0.005%	ILL. PAR.
GAUTENG PUMP PRICE (SA c/l) AS FROM 02/01/2019	1 401.000	1 379.000	-	-	-
WHOLESALE PRICE (SA c/l) AS FROM 02/01/2019	-	-	1 313.420	1 316.820	828.678
SINGLE NATIONAL MAXIMUM RETAIL PRICE	-	-	-	-	1 067.000
BASIC FUEL PRICE - 22/01/2019 (SA c/l)	574.952	563.770	682.955	687.811	681.226
PRESS RELEASE CONTRIBUTION TO BFP 02/01/2018 - 22/01/2019 (SA c/l)	536.470	524.470	635.630	639.030	651.128
UNIT OVER/(UNDER) RECOVERY - 22/01/2019 (SA c/l)	(38.482)	(39.300)	(47.325)	(48.781)	(30.098)
AVERAGE BASIC FUEL PRICE 27/12/2018 - 22/01/2019	560.831	549.048	651.280	655.614	662.153
AVERAGE UNIT OVER/(UNDER) RECOVERY 27/12/2018 - 22/01/2019	(3.081)	(3.509)	12.140	11.626	14.870

ANALYSIS MOVEMENT OF AVERAGE OVER/(UNDER) RECOVERY

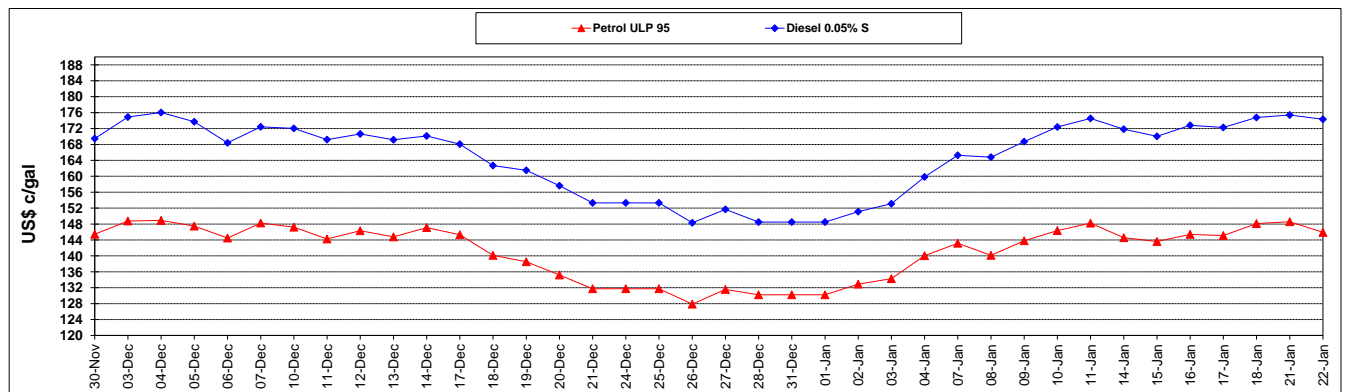
	PETROL 95	PETROL 93	DIESEL 0.05%	DIESEL 0.005%	ILL. PAR.
- MOVEMENT IN INTERNATIONAL PRODUCT PRICES	(8.078)	(8.401)	6.336	5.786	8.971
- MOVEMENT IN EXCHANGE RATE	4.997	4.892	5.803	5.841	5.899
AVERAGE UNIT OVER/(UNDER) RECOVERY 27/12/2018 - 22/01/2019	(3.081)	(3.509)	12.140	11.626	14.870

R/\$ EXCHANGE RATE - (R/\$13.8900 - 22/01/2019)

EXCHANGE RATE USED IN BASIC FUEL PRICE



INTERNATIONAL PRODUCT PRICES OF BASKET USED IN BASIC FUEL PRICE



BASIC FUEL PRICE IN SA CENTS PER LITRE

