

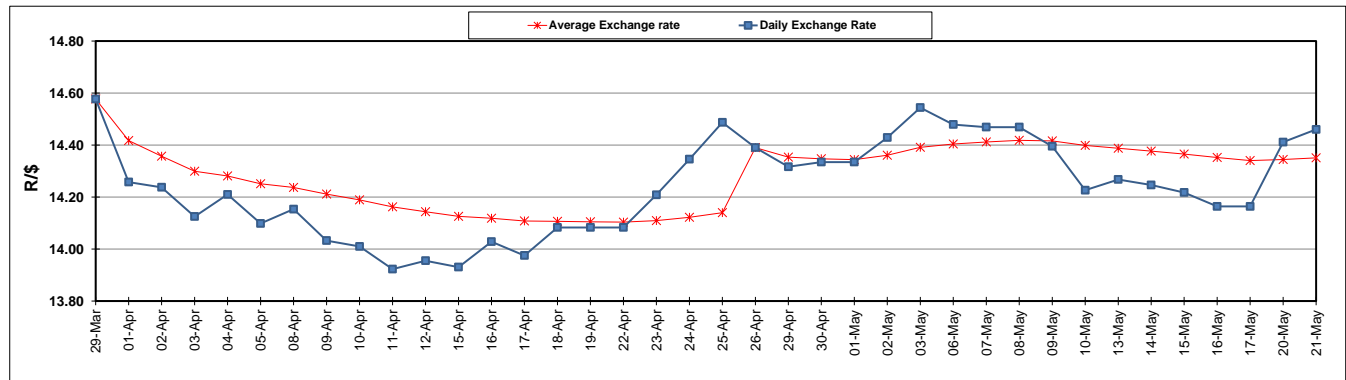
	PETROL 95 ULP	PETROL 93 ULP & LRP	DIESEL 0.05%	DIESEL 0.005%	ILL. PAR.
GAUTENG PUMP PRICE (SA c/l) AS FROM 01/05/2019	1 667.000	1 648.000	-	-	-
WHOLESALE PRICE (SA c/l) AS FROM 01/05/2019	-	-	1 488.120	1 494.520	965.678
SINGLE NATIONAL MAXIMUM RETAIL PRICE	-	-	-	-	1 231.000
BASIC FUEL PRICE - 21/05/2019 (SA c/l)	775.976	765.006	809.437	816.697	805.512
PRESS RELEASE CONTRIBUTION TO BFP 01/05/2019 - 21/05/2019 (SA c/l)	777.170	768.170	784.630	791.030	781.128
UNIT OVER/(UNDER) RECOVERY - 21/05/2019 (SA c/l)	1.194	3.164	(24.807)	(25.667)	(24.384)
AVERAGE BASIC FUEL PRICE 26/04/2019 - 21/05/2019	762.050	751.026	799.022	806.055	793.648
AVERAGE UNIT OVER/(UNDER) RECOVERY 26/04/2019 - 21/05/2019	6.120	8.144	(14.558)	(15.025)	(13.020)

ANALYSIS MOVEMENT OF AVERAGE OVER/(UNDER) RECOVERY

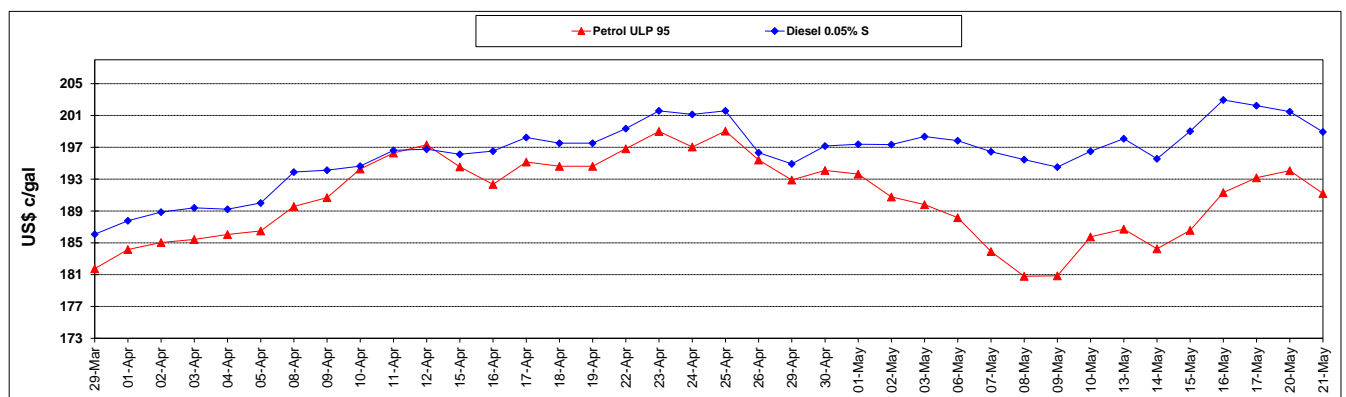
	PETROL 95	PETROL 93	DIESEL 0.05%	DIESEL 0.005%	ILL. PAR.
- MOVEMENT IN INTERNATIONAL PRODUCT PRICES	17.314	19.176	(2.822)	(3.185)	(1.362)
- MOVEMENT IN EXCHANGE RATE	(11.194)	(11.032)	(11.737)	(11.840)	(11.658)
AVERAGE UNIT OVER/(UNDER) RECOVERY 26/04/2019 - 21/05/2019	6.120	8.144	(14.558)	(15.025)	(13.020)

R/\$ EXCHANGE RATE - (R/\$14.4600 - 21/05/2019)

EXCHANGE RATE USED IN BASIC FUEL PRICE



INTERNATIONAL PRODUCT PRICES OF BASKET USED IN BASIC FUEL PRICE



BASIC FUEL PRICE IN SA CENTS PER LITRE

