

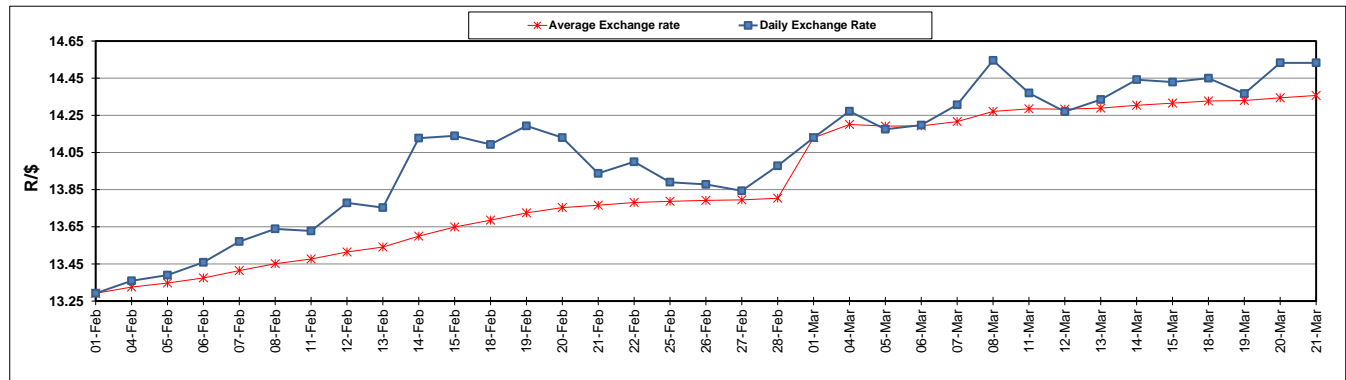
	PETROL 95 ULP	PETROL 93 ULP & LRP	DIESEL 0.05%	DIESEL 0.005%	ILL. PAR.
GAUTENG PUMP PRICE (SA c/l) AS FROM 06/03/2019	1 482.000	1 460.000	-	-	-
WHOLESALE PRICE (SA c/l) AS FROM 06/03/2019	-	-	1 405.420	1 411.820	899.678
SINGLE NATIONAL MAXIMUM RETAIL PRICE	-	-	-	-	1 162.000
BASIC FUEL PRICE - 21/03/2019 (SA c/l)	745.783	736.652	782.251	789.063	783.266
PRESS RELEASE CONTRIBUTION TO BFP 06/03/2019 - 21/03/2019 (SA c/l)	617.470	605.470	727.630	734.030	722.128
UNIT OVER/(UNDER) RECOVERY - 21/03/2019 (SA c/l)	(128.313)	(131.182)	(54.621)	(55.033)	(61.138)
AVERAGE BASIC FUEL PRICE 01/03/2019 - 21/03/2019	703.749	693.752	770.783	778.209	766.115
AVERAGE UNIT OVER/(UNDER) RECOVERY 01/03/2019 - 21/03/2019	(101.079)	(103.082)	(61.353)	(62.779)	(59.187)

ANALYSIS MOVEMENT OF AVERAGE OVER/(UNDER) RECOVERY

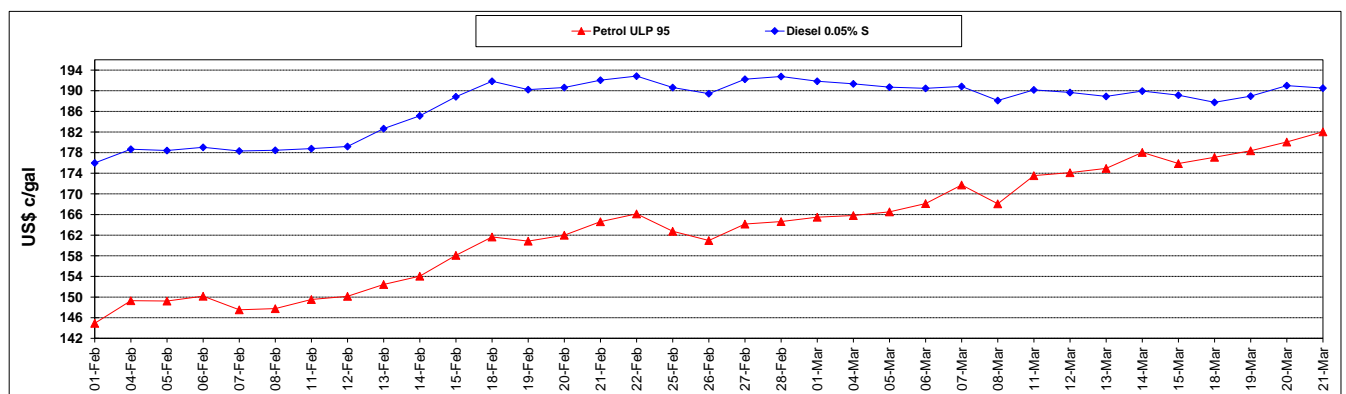
	PETROL 95	PETROL 93	DIESEL 0.05%	DIESEL 0.005%	ILL. PAR.
- MOVEMENT IN INTERNATIONAL PRODUCT PRICES	(73.962)	(76.351)	(31.653)	(32.793)	(29.667)
- MOVEMENT IN EXCHANGE RATE	(27.117)	(26.731)	(29.700)	(29.986)	(29.520)
AVERAGE UNIT OVER/(UNDER) RECOVERY 01/03/2019 - 21/03/2019	(101.079)	(103.082)	(61.353)	(62.779)	(59.187)

R/\$ EXCHANGE RATE - (R/\$14.5328 - 21/03/2019)

EXCHANGE RATE USED IN BASIC FUEL PRICE



INTERNATIONAL PRODUCT PRICES OF BASKET USED IN BASIC FUEL PRICE



BASIC FUEL PRICE IN SA CENTS PER LITRE

